

Exhibit B

2007 Low- and Moderate-Income Populations in Pickaway County

Community *	Total Pop.	No. LMI Persons		LMI		LMI		
		0-30%	30-50%	50-80%Total	Universe	Pct.		
Pickaway County	52,727	5,370	5,623	9,348	20,341	46,236	44.0%	
<u>Ashville Village</u>	Community Totals = 3,174	352	429	762	1,543	3,217	48.0%	
	<u>Tract**</u>	<u>Block Group**</u>						
	021200	1	1,146	69	86	206	361	1,182 30.5%
	021200	2	245	64	50	69	183	260 70.4%
	021200	3	1,093	182	214	362	758	1,086 69.8*
	021200	4	690	37	79	125	241	689 35.0%
	Tract Total =		3,174	352	429	762	1,543	3,217 48.0%

The Number of Households and Persons benefiting from the Project 2010-2014

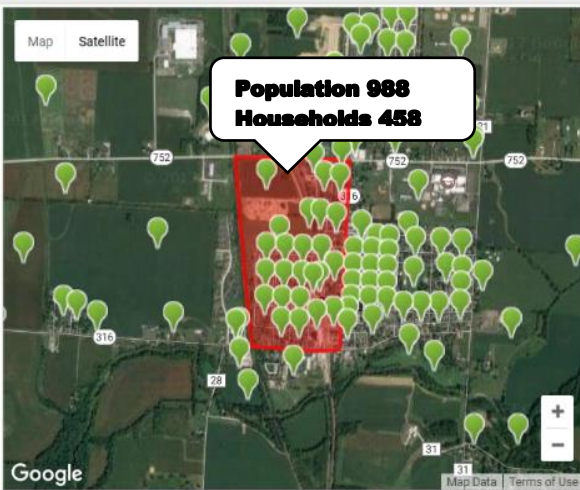
OH1290212		
Project Area Census Block	Households	Population
002	13	42
004	17	33
010	13	37
013	30	79
014	41	93
016	9	23
Total	123	307

OH1290212		
Project Area Ashville	Households	Population
001 003 004	1,398	4,130

OH1290212		
Project Area Block Group	Households	Population
021200-3	458	988

Block Group 021200-3 Map, Border, and Nearby Locations

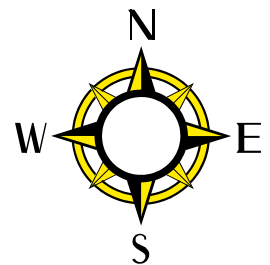
Census Blocks Map View. Full data. Click icon to show name.



Show More Locations on the Map

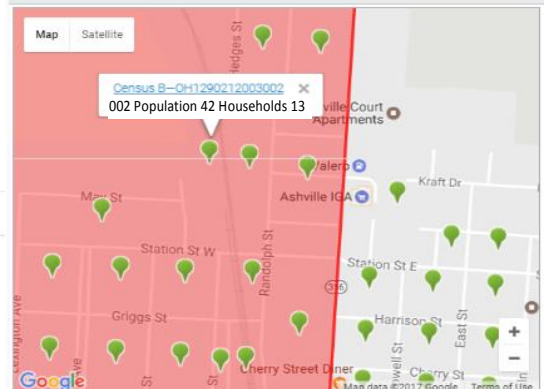
- Census Blocks*
- Census Block Groups*
- Census Tracts*
- Zip Codes
- School Districts
- Cities
- Counties
- Metro Areas
- States

* Census Blocks, Census Tracts are geo areas that are normally smaller than the size of a city. Census Blocks provide block and community level information. They are great for understanding areas within a city.



Block Group 021200-3 Map, Border, and Nearby Locations

Census Blocks Map View. Full data. Click icon to show name.



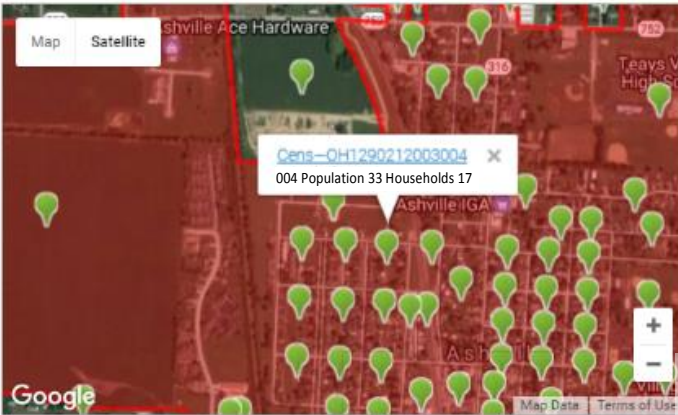
Block Group 021200-3 Blocks

- | | | |
|--|--|--|
| OH1290212003000 Ashville | OH1290212003001 Ashville | OH1290212003002 Ashville |
| OH1290212003003 Ashville | OH1290212003004 Ashville | OH1290212003005 Ashville |
| OH1290212003006 Ashville | OH1290212003007 Ashville | OH1290212003008 Ashville |
| OH1290212003009 Ashville | OH1290212003010 Ashville | OH1290212003011 Ashville |
| OH1290212003012 Ashville | OH1290212003013 Ashville | OH1290212003014 Ashville |
| OH1290212003015 Ashville | OH1290212003016 Ashville | OH1290212003017 Ashville |
| OH1290212003018 Ashville | OH1290212003019 Ashville | OH1290212003020 Ashville |
| OH1290212003021 Ashville | OH1290212003022 Ashville | OH1290212003023 Ashville |
| OH1290212003024 Ashville | OH1290212003025 Ashville | |

Exhibit B

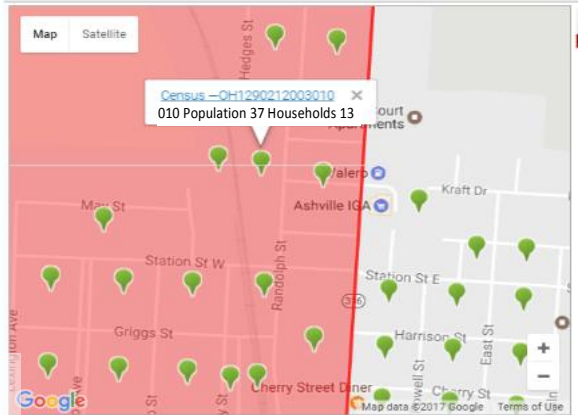
Ashville, OH Map, Border, and Nearby Locations

Census Blocks Map View. Full data. Click icon to show name.



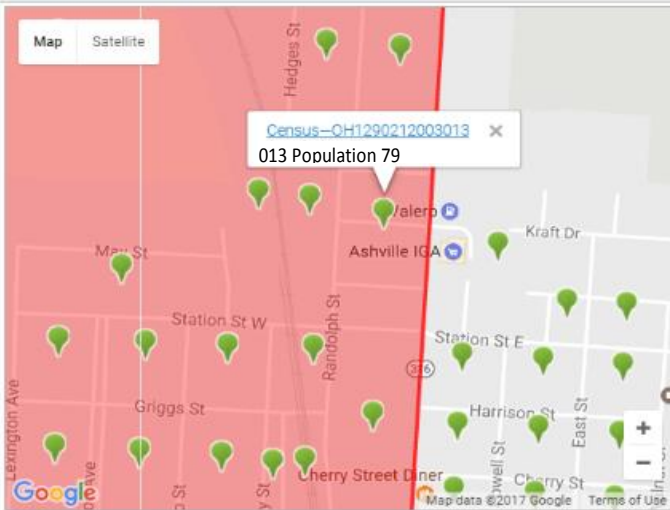
Block Group 021200-3 Map, Border, and Nearby Locations

Census Blocks Map View. Full data. Click icon to show name.



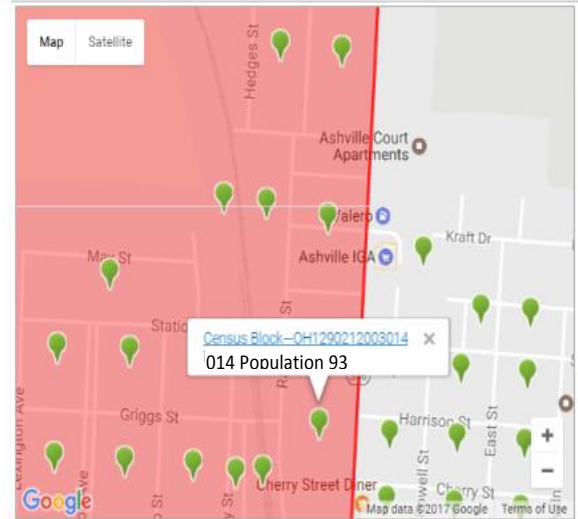
Block Group 021200-3 Map, Border, and Nearby Locations

Census Blocks Map View. Full data. Click icon to show name.



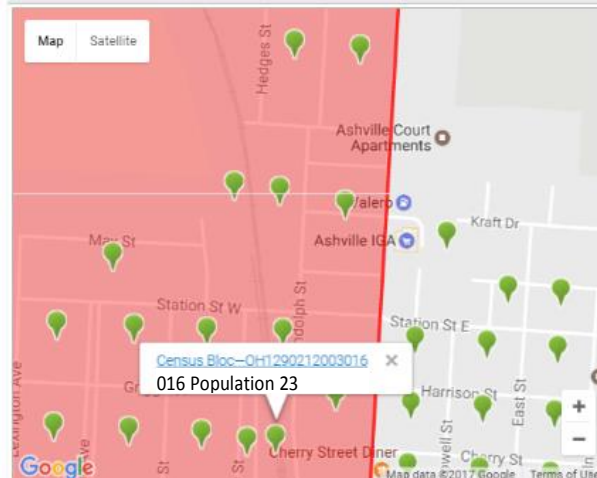
Block Group 021200-3 Map, Border, and Nearby Locations

Census Blocks Map View. Full data. Click icon to show name.



Block Group 021200-3 Map, Border, and Nearby Locations

Census Blocks Map View. Full data. Click icon to show name.



Ashville, OH Map, Border, and Nearby Locations

**Census Block Group
OH1290212**

001
003
004

Cities Map View. Full data. Click icon to show name.



Show More Locations on the Map

- [Census Blocks*](#)
- [Census Block Groups*](#)
- [Census Tracts*](#)
- [Zip Codes](#)
- [School Districts](#)
- Cities**
- [Counties](#)
- [Metro Areas](#)
- [States](#)

* Census Blocks, Census Block Groups, and Census Tracts are geo areas that are normally smaller than the size of a city. Census Blocks provide block and community level information. They are great for understanding areas within a city.

**Cens-OH129021 2010-2014
Population 4,130
Households 1,398**

Ashville is located close to the center of Ohio. Ashville is between the Pickaway, Fairfield county. Ashville has 2.51 square miles of land area and has no water area. As of 2010-2014, the total Ashville population is 4,130, which has grown 30.12% since 2000. The population growth rate is much higher than the state average rate of 1.83% and is much higher than the national average rate of 11.61%. Ashville median household income is \$54,219 in 2010-2014 and has grown by 32.96% since 2000. The income growth rate is much higher than the state average rate of 19.27% and is higher than the national average rate of 27.36%. Ashville median house value is \$148,700 in 2010-2014 and has grown by 27.86% since 2000. The house value growth rate is higher than the state average rate of 24.98% and is much lower than the national average rate of 46.91%. As a reference, the national Consumer Price Index (CPI) inflation rate for the same period is 26.63%. On average, the public school district that covers Ashville is close to the state average in quality. The Ashville area code is 740.

As of 2010-2014, the per capita income of Ashville is \$21,795, which is lower than the state average of \$26,520 and is lower than the national average of \$28,555. Ashville median household income is \$54,219, which has grown by 32.96% since 2000. The median household income growth rate is much higher than the state average rate of 19.27% and is higher than the national average rate of 27.36%. On average Ashville residents spend 27.3 minutes per day commuting to work, which is higher than the state average of 22.8 minutes and is higher than the national average of 25.7 minutes.

FRIDAY, MAY 20, 2016



HUD.GOV
U.S. Department of Housing and Urban Development
Secretary Julián Castro



Search HUDUser

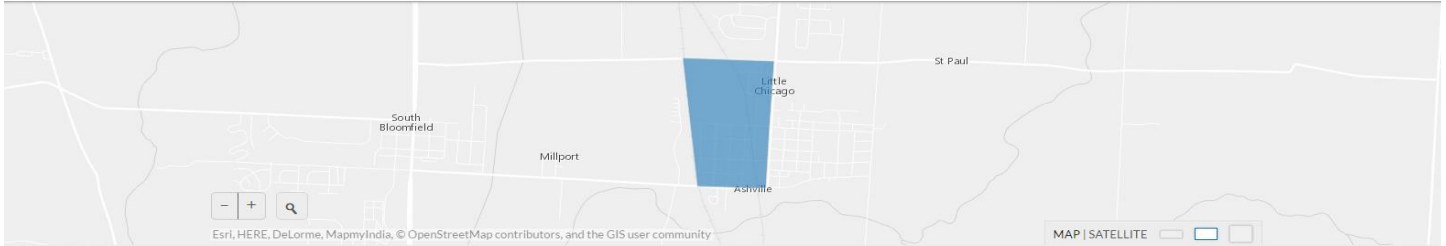
[eGIS Home](#) [eGIS Applications](#) [eGIS Data](#) [eGIS API and Data Documentation](#)

Search for open data

SEARCH WITHIN MAP

[Sign In](#)

[My Activity](#)



< Low to Moderate Income Population by Block Group

[VIEW ALL DATA](#)

[Location](#)

DESCRIPTION

[less ▲](#)

The Community Development Block Grant (CDBG) program requires that each CDBG funded activity must either principally benefit low- and moderate-income persons, aid in the prevention or elimination of slums or blight, or meet a community development need having a particular urgency because existing conditions pose a serious and immediate threat to the health or welfare of the community and other financial resources are not available to meet that need. With respect to activities that principally benefit low- and moderate-income persons, at least 51 percent of the activity's beneficiaries must be low and moderate income. For CDBG, a person is considered to be of low income only if he or she is a member of a household whose income would qualify as "very low income" under the Section 8 Housing Assistance Payments program. Generally, these Section 8 limits are based on 50% of area median. Similarly, CDBG moderate income relies on Section 8 "lower income" limits, which are generally tied to 80% of area median. These data are from the 2006-2010 American Community Survey (ACS) and based on Census 2010 geography. To learn more about the Low to Moderate Income Data, please visit the following website: <http://www.hud.gov/offices/cpd/systems/census/lowmod/index.cfm>. Data is current as of 10/27/2014. uTag: 9c63acff-161a-4878-a37d-92ca8278d61e

ABOUT

HUD Open Data

By [HUD.Official.Content](#)

Updated: 3 months ago

Collection of HUD's Open Data feature services used to populate HUD's Open Data storefront.

Source <https://services.arcgis.com/VTyQ9soqYukallt/>
Metadata [Low to Moderate Income Population by Blo](#)
License No license specified

TAGS

Development | Block | Grant | Housing | Assistance | Payments | Similarly | CDBG | Low | Moderate | Income | Data | Current | Census | 9c63acff-161a-4878-a37d-92ca8278d61e

DATASET ATTRIBUTES

GEOID Text	391290212003
State FIPS Code Text	39
County FIPS Code Text	129
Census Tract FIPS Code Text	021200
Blockgroup FIPS Code Text	3
Number of Low Income Persons Number	355
Number of Low, Moderate and Medium Income Persons Number	745
Number of Low and Moderate Income Persons Number	560
Universe of Low and Moderate Income Persons Number	920
Percent of Low and Moderate Income Persons Number	60.87
Number of Uncapped Low Income Persons Number	
Universe of Uncapped Low and Moderate Income Persons Number	
OBJECTID Unique ID	153004

RELATED DATASETS

feature

CDBG Activity

feature

HUD CPD IDIS ACTV CDBG TRACT

feature

CDBG Activity by Tract

feature

ACS 5 Year CHAS Data by Summary Level GEO as of