

# Exhibit E

## The Number of Households and Persons benefiting from the Project 2010-2014

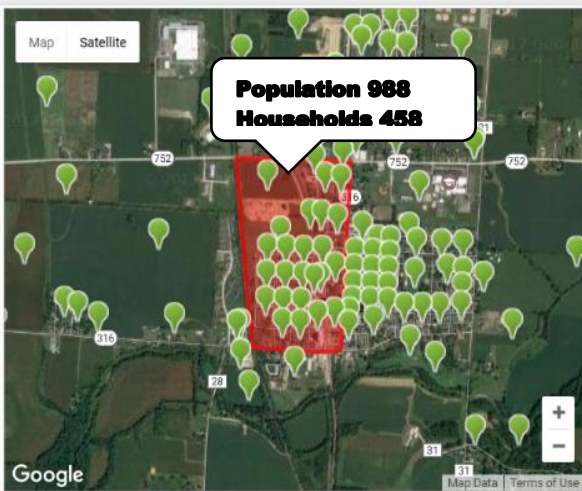
OH1290212		
Project Area Census Block	Households	Population
002	13	42
004	17	33
010	13	37
013	30	79
014	41	93
016	9	23
<b>Total</b>	<b>123</b>	<b>307</b>

OH1290212		
Project Area Ashville	Households	Population
<b>001 003 004</b>	<b>1,398</b>	<b>4,130</b>

OH1290212		
Project Area Block Group	Households	Population
<b>021200-3</b>	<b>458</b>	<b>988</b>

### Block Group 021200-3 Map, Border, and Nearby Locations

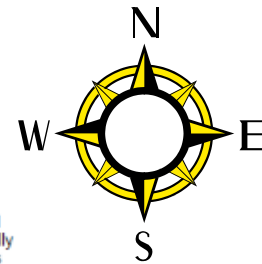
Census Blocks Map View. Full data. Click icon to show name.



Show More Locations on the Map

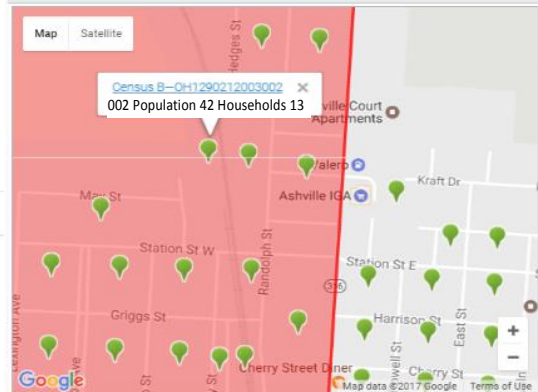
- Census Blocks\*
- Census Block Groups\*
- Census Tracts\*
- Zip Codes
- School Districts
- Cities
- Counties
- Metro Areas
- States

\* Census Blocks, Census Block Groups, and Census Tracts are geo areas that are normally smaller than the size of a city. Census Blocks provide block and community level information. They are great for understanding areas within a city.



### Block Group 021200-3 Map, Border, and Nearby Locations

Census Blocks Map View. Full data. Click icon to show name.

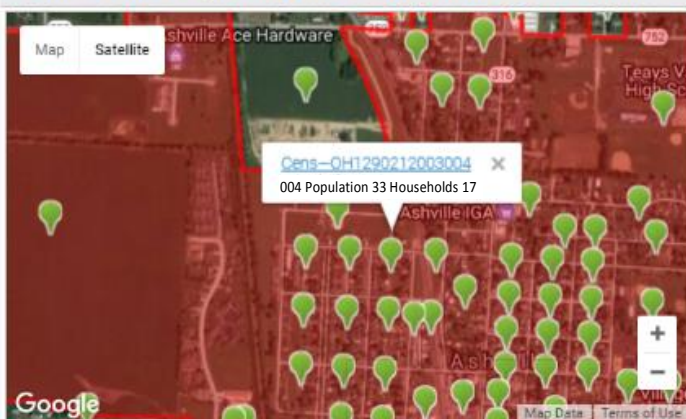


### Block Group 021200-3 Blocks

- |                          |                          |                          |
|--------------------------|--------------------------|--------------------------|
| OH1290212003000 Ashville | OH1290212003001 Ashville | OH1290212003002 Ashville |
| OH1290212003003 Ashville | OH1290212003004 Ashville | OH1290212003005 Ashville |
| OH1290212003006 Ashville | OH1290212003007 Ashville | OH1290212003008 Ashville |
| OH1290212003008 Ashville | OH1290212003010 Ashville | OH1290212003011 Ashville |
| OH1290212003012 Ashville | OH1290212003013 Ashville | OH1290212003014 Ashville |
| OH1290212003015 Ashville | OH1290212003016 Ashville | OH1290212003017 Ashville |
| OH1290212003018 Ashville | OH1290212003019 Ashville | OH1290212003020 Ashville |
| OH1290212003021 Ashville | OH1290212003022 Ashville | OH1290212003023 Ashville |
| OH1290212003024 Ashville | OH1290212003025 Ashville |                          |

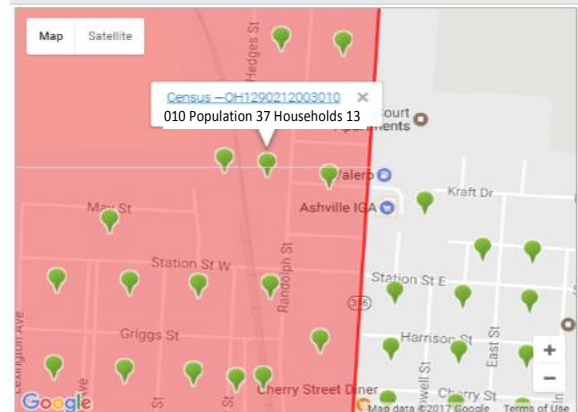
### Ashville, OH Map, Border, and Nearby Locations

Census Blocks Map View. Full data. Click icon to show name.



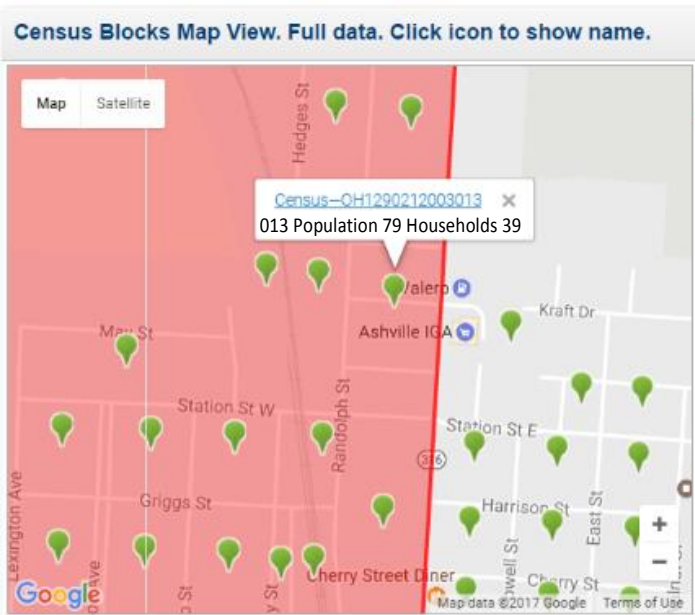
### Block Group 021200-3 Map, Border, and Nearby Locations

Census Blocks Map View. Full data. Click icon to show name.

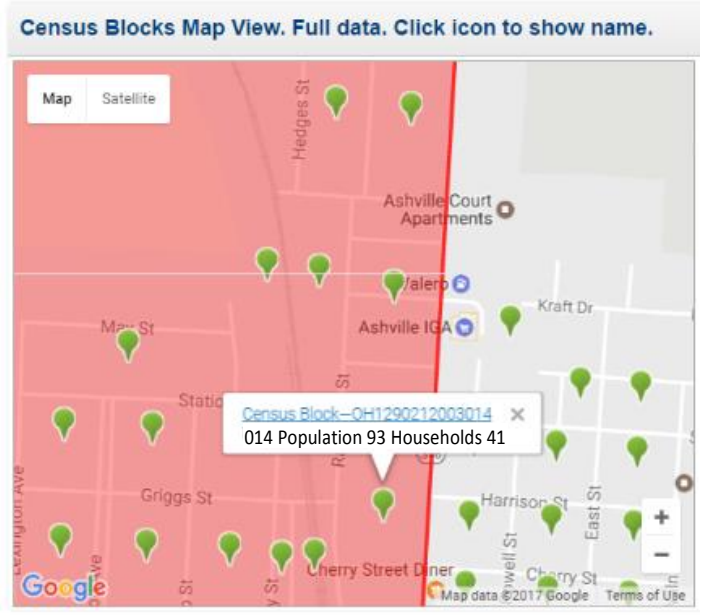


# Exhibit E

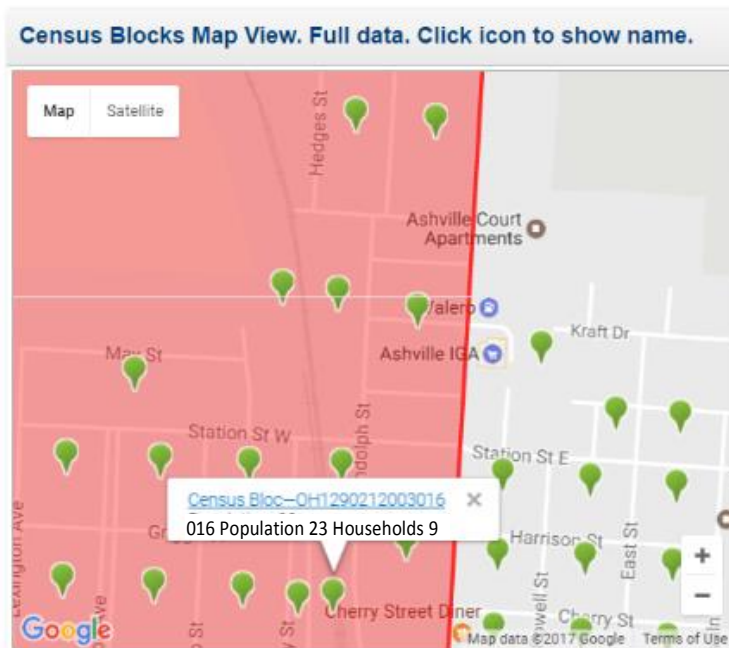
## Block Group 021200-3 Map, Border, and Nearby Locations



## Block Group 021200-3 Map, Border, and Nearby Locations



## Block Group 021200-3 Map, Border, and Nearby Locations



Ashville, OH Map, Border, and Nearby Locations

Census Block Group  
OH1290212

001  
003  
004

Cities Map View. Full data. Click icon to show name.



Show More Locations on the Map

- [Census Blocks\\*](#)
- [Census Block Groups\\*](#)
- [Census Tracts\\*](#)
- [Zip Codes](#)
- [School Districts](#)
- Cities**
- [Counties](#)
- [Metro Areas](#)
- [States](#)

\* Census Blocks, Census Block Groups, and Census Tracts are geo areas that are normally smaller than the size of a city. Census Blocks provide block and community level information. They are great for understanding areas within a city.

Cens-OH129021 2010-2014  
Population 4,130  
Households 1,398

Ashville is located close to the center of Ohio. Ashville is between the Pickaway, Fairfield county. Ashville has 2.51 square miles of land area and has no water area. As of 2010-2014, the total Ashville population is 4,130, which has grown 30.12% since 2000. The population growth rate is much higher than the state average rate of 1.83% and is much higher than the national average rate of 11.61%. Ashville median household income is \$54,219 in 2010-2014 and has grown by 32.96% since 2000. The income growth rate is much higher than the state average rate of 19.27% and is higher than the national average rate of 27.36%. Ashville median house value is \$148,700 in 2010-2014 and has grown by 27.86% since 2000. The house value growth rate is higher than the state average rate of 24.98% and is much lower than the national average rate of 46.91%. As a reference, the national Consumer Price Index (CPI) inflation rate for the same period is 26.63%. On average, the public school district that covers Ashville is close to the state average in quality. The Ashville area code is 740.

As of 2010-2014, the per capita income of Ashville is \$21,795, which is lower than the state average of \$26,520 and is lower than the national average of \$28,555. Ashville median household income is \$54,219, which has grown by 32.96% since 2000. The median household income growth rate is much higher than the state average rate of 19.27% and is higher than the national average rate of 27.36%. On average Ashville residents spend 27.3 minutes per day commuting to work, which is higher than the state average of 22.8 minutes and is higher than the national average of 25.7 minutes.