

APPENDIX A

C:\USERS\CTEBBE\ONE\DRIVE\T\CE\PROJECTS\1000\1\1000 - ASHVILLE STREETS 2018\CORRES\DWGS AND PDFS\1000_STREET PAVING (NEW ORTHO).DWG 4/26/2019 10:39:23 AM CTebbe



PAVEMENT AREA
=0 SF

FULL DEPTH
PVMT = 12 SY



SCALE: 1" = 30'



PATCH PAVEMENT REPAIR EXHIBIT
ASHVILLE STREET PAVING PROJECT
 CHURCH STREET
 VILLAGE OF ASHVILLE, OHIO

REVISIONS	

JOB NO.	1000
DRAWN BY	MJM
DESIGN BY	CMT
CHECKED BY	CMT

VILLAGE OF ASHVILLE, OHIO
2019 STREET RESURFACING PROJECT

STREET: CHURCH STREET
 IMPROVEMENTS: FULL DEPTH PAVEMENT REPLACEMENT
 WORK LIMITS: FROM: BORTZ STREET TO: POWELL STREET

PAVEMENT

BEGIN: _____

END: _____

PAVEMENT WIDTH (MIN): 0 LF
 PAVEMENT WIDTH (AVG): 0 LF
 PAVEMENT LENGTH: 0 LF

PAVEMENT PLANING: 0 SF

PROJECT AREA: 0 SY
 (INCLUDES CONNECTING STREETS)

CONNECTING STREETS TO BE RESURFACED: _____ SY
 _____ SY
 _____ SY
 _____ SY
 _____ SY
 TOTAL: 0 SY

COMMENTS: _____

PAVEMENT DATA:

	ESTIMATED	COMMENTS:	ACTUAL
ITEM 204, SUBGRADE COMPACTION	12 SY		SY
ITEM 254, PAVEMENT PLANING, BITUMINOUS [1" AVERAGE]	SY		SY
ITEM 301, BITUMINOUS AGGREGATE BASE	CY @ 7-1/4" THICK		CY @ 7-1/4" THICK
ITEM 407, TACK COAT (APPLIED @0.25 GAL/SY)	GAL		GAL
* ITEM 423, CRACK SEALING, TYPE III	SY		SY
ITEM 448, ASPHALT CONCRETE, SURFACE TYPE 1	CY @ 1-1/4" THICK		CY @ 1-1/4" THICK
ITEM 448, ASPHALT CONCRETE, INTERMEDIATE TYPE 2	CY @ 1-1/2" THICK		CY @ 1-1/2" THICK

ADDITIONAL ITEMS:

ITEM 202, PAVEMENT REMOVED	12 SY		SY
ITEM 253, FULL DEPTH PAVEMENT REPLACEMENT (12" DEPTH)	4 CY		CY
ITEM 609, COMBINATION CURB AND GUTTER	0 LF		LF
ITEM 644, STOP LINES, 20" WIDE	0 LF		LF
ITEM 644, CROSSWALK LINE, 10" WIDE	0 LF		LF

ITEM 604, MANHOLE ADJUSTED TO GRADE

ESTIMATED	
NUMBER OF MANHOLES	STATION

ITEM 604, MANHOLE ADJUSTED TO GRADE 1 EACH

ACTUAL	
NUMBER OF MANHOLES	STATION

ITEM 604, MANHOLE ADJUSTED TO GRADE _____ EACH

ITEM 604, CATCH BASIN ADJUSTED TO GRADE

ESTIMATED	
NUMBER OF CATCH BASINS	STATION

ITEM 604, CATCH BASIN ADJUSTED TO GRADE 0 EACH

ACTUAL	
NUMBER OF CATCH BASINS	STATION

ITEM 604, CATCH BASIN ADJUSTED TO GRADE _____ EACH

ITEM 807, VALVE BOX ADJUSTED TO GRADE

ESTIMATED	
NUMBER OF VALVE BOXES	STATION

ITEM 807, VALVE BOX ADJUSTED TO GRADE 0 EACH

ACTUAL	
NUMBER OF VALVE BOXES	STATION

ITEM 807, VALVE BOX ADJUSTED TO GRADE _____ EACH

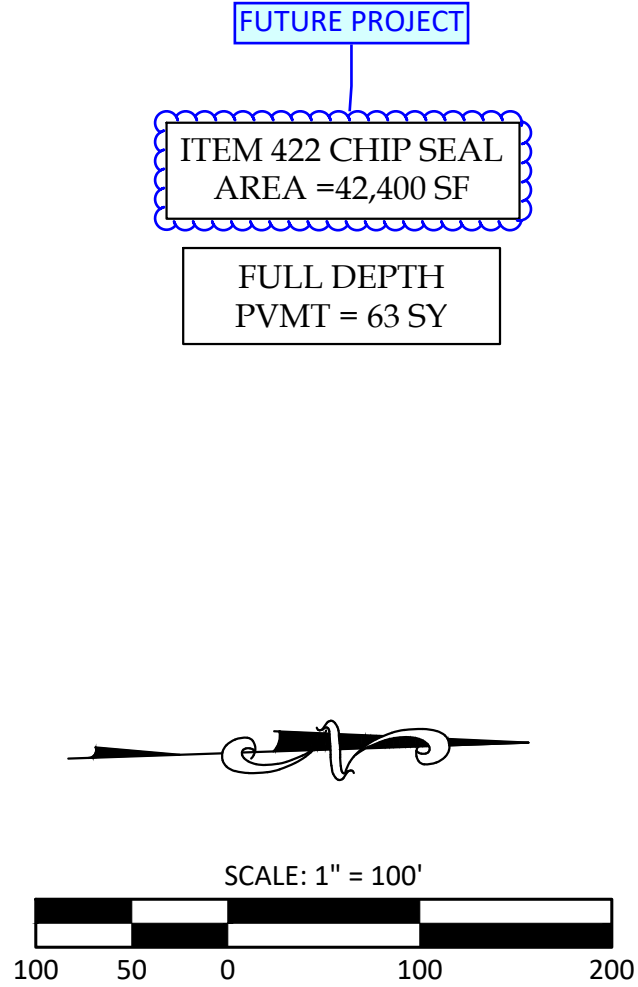
* REFERS TO OHIO DEPARTMENT OF TRANSPORTATION CONSTRUCTION AND MATERIAL SPECIFICATIONS

C:\USERS\CTEBBE\ONE DRIVE\PROJECTS\1000\1000 - ASHVILLE STREETS 2018\CORRES\DWGS AND PDFS\1000_STREET PAVING (NEW ORTHO).DWG 4/26/2019 10:39:40 AM CTebbe

MATCHLINE, THIS SHEET



MATCHLINE, THIS SHEET



CHIP AND SEAL EXHIBIT
ASHVILLE STREET PAVING PROJECT
 LEXINGTON AVENUE
 VILLAGE OF ASHVILLE, OHIO

REVISIONS	
JOB NO.	1000
DRAWN BY	MJM
DESIGN BY	CMT
CHECKED BY	CMT

SHEET
1
 OF 1



VILLAGE OF ASHVILLE, OHIO
2019 STREET RESURFACING PROJECT

STREET: LEXINGTON AVENUE CHIP SEAL
 IMPROVEMENTS: FULL DEPTH PAVEMENT REPLACEMENT, DOUBLE CHIP AND SEAL (FUTURE)
 WORK LIMITS: FROM: RICH STREET BEGIN: _____
 TO: STATION STREET END: _____

PAVEMENT WIDTH (MIN): 28 LF PAVEMENT AREA: 42400 SF
 PAVEMENT WIDTH (MAX): 36 LF
 PAVEMENT LENGTH: 1408 LF

PROJECT AREA: 4711 SY
 (INCLUDES CONNECTING STREETS)

CONNECTING STREETS TO BE RESURFACED: _____ SY COMMENTS: _____
 _____ SY _____
 _____ SY _____
 _____ SY _____
 _____ SY _____
 TOTAL: 0 SY

PAVEMENT DATA:

	ESTIMATED	COMMENTS:	ACTUAL
ITEM 204, SUBGRADE COMPACTION	63 SY		SY
ITEM 254, PAVEMENT PLANING, BITUMINOUS [1" AVERAGE]	SY		SY
ITEM 301, BITUMINOUS AGGREGATE BASE	CY @ 7-1/4" THICK		CY @ 7-1/4" THICK
ITEM 407, TACK COAT (APPLIED @0.25 GAL/SY)	GAL		GAL
* ITEM 422, DOUBLE CHIP SEAL	SY		SY
* ITEM 423, CRACK SEALING, TYPE III	SY		SY
ITEM 448, ASPHALT CONCRETE, SURFACE TYPE 1	CY @ 1-1/4" THICK		CY @ 1-1/4" THICK
ITEM 448, ASPHALT CONCRETE, INTERMEDIATE TYPE 2	CY @ 1-1/2" THICK		CY @ 1-1/2" THICK

ADDITIONAL ITEMS:

ITEM 202, PAVEMENT REMOVED	63 SY		SY
ITEM 253, FULL DEPTH PAVEMENT REPLACEMENT (12" DEPTH)	21 CY		CY
ITEM 609, COMBINATION CURB AND GUTTER	0 LF		LF
ITEM 644, STOP LINES, 20" WIDE	LF		LF
ITEM 644, CROSSWALK LINE, 10" WIDE	0 LF		LF

ITEM 604, MANHOLE ADJUSTED TO GRADE

ESTIMATED	
NUMBER OF MANHOLES	STATION

ITEM 604, MANHOLE ADJUSTED TO GRADE 0 EACH

ACTUAL	
NUMBER OF MANHOLES	STATION

ITEM 604, MANHOLE ADJUSTED TO GRADE _____ EACH

ITEM 604, CATCH BASIN ADJUSTED TO GRADE

ESTIMATED	
NUMBER OF CATCH BASINS	STATION

ITEM 604, CATCH BASIN ADJUSTED TO GRADE 0 EACH

ACTUAL	
NUMBER OF CATCH BASINS	STATION

ITEM 604, CATCH BASIN ADJUSTED TO GRADE _____ EACH

ITEM 807, VALVE BOX ADJUSTED TO GRADE

ESTIMATED	
NUMBER OF VALVE BOXES	STATION

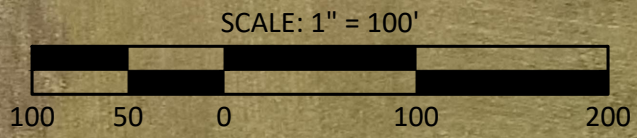
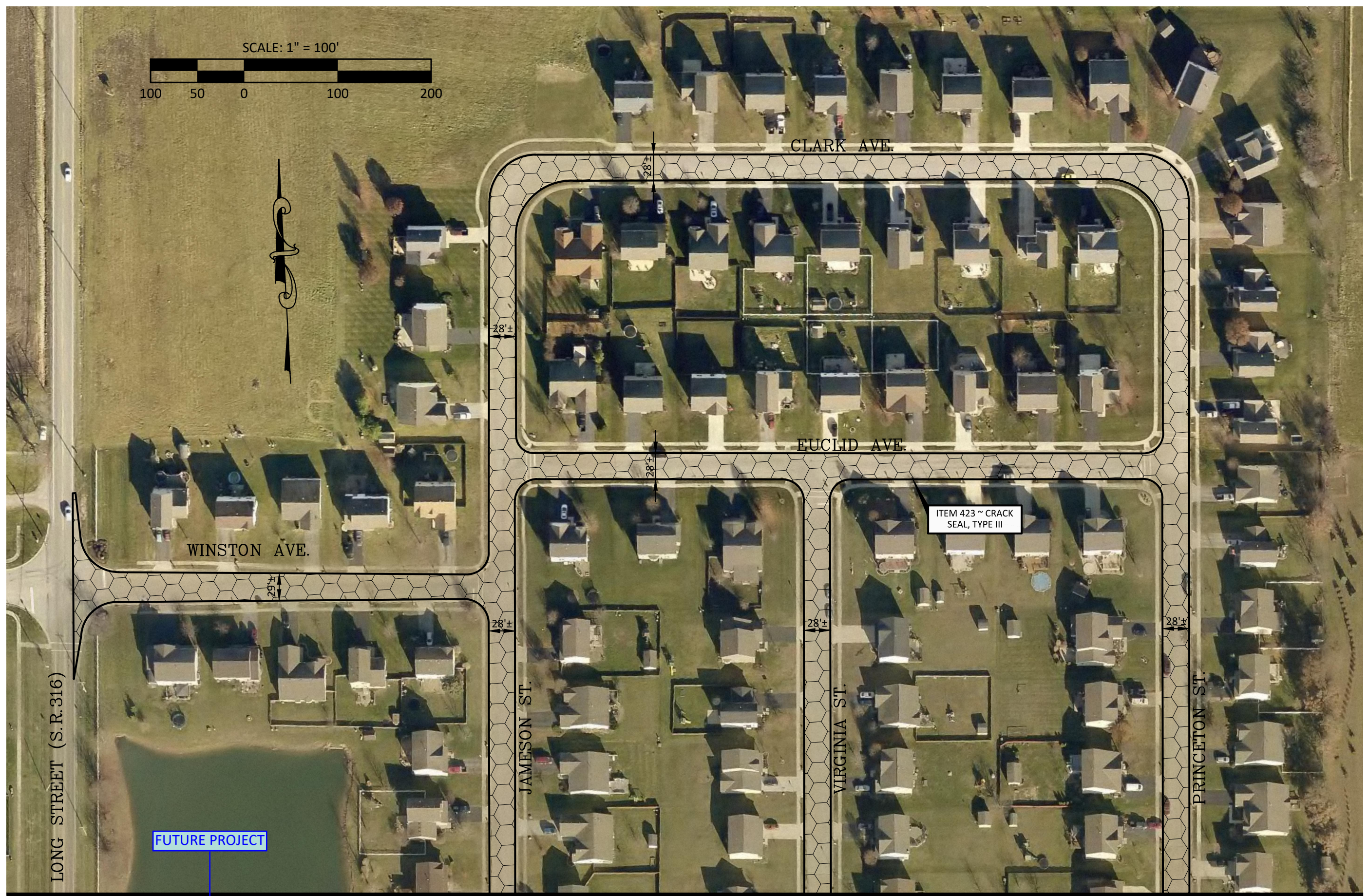
ITEM 807, VALVE BOX ADJUSTED TO GRADE 0 EACH

ACTUAL	
NUMBER OF VALVE BOXES	STATION

ITEM 807, VALVE BOX ADJUSTED TO GRADE _____ EACH

* REFERS TO OHIO DEPARTMENT OF TRANSPORTATION CONSTRUCTION AND MATERIAL SPECIFICATIONS

C:\USERS\CTEBBE\ONE\PROJECTS\1000\S\1000 - ASHVILLE STREETS 2018\CORRES\DWGS AND PDFS\1000_STREET PAVING (NEW ORTHO).DWG 4/26/2019 10:39:51 AM CTebbe



LONG STREET (S.R. 316)

WINSTON AVE.

CLARK AVE.

EUCLID AVE.

JAMESON ST.

VIRGINIA ST.

PRINCETON ST.

FUTURE PROJECT

ITEM 423 ~ CRACK SEAL, TYPE III

ITEM 423 CRACK SEALING = 216,790 SF

FULL DEPTH PVMT = 28 SY

MATCHLINE, SEE SHEET 2

CRACK SEAL EXHIBIT
 ASHVILLE STREET PAVING PROJECT
 ASHTON VILLAGE - PHASE 2
 VILLAGE OF ASHVILLE, OHIO



5792 Gaelic Court
 Dublin, Ohio 43016
 Phone (614)704-6457 • Chris@TebbeCivil.com

REVISIONS	

JOB NO.	1000
DRAWN BY	MJM
DESIGN BY	CMT
CHECKED BY	CMT

MATCHLINE, SEE SHEET 1



CRACK SEAL EXHIBIT
ASHVILLE STREET PAVING PROJECT
 ASHTON VILLAGE - PHASE 2
 VILLAGE OF ASHVILLE, OHIO

REVISIONS

JOB NO.	1000
DRAWN BY	MJM
DESIGN BY	CMT
CHECKED BY	CMT

SHEET

2

OF 2

TEBBE CIVIL ENGINEERING, LLC

5792 Gaelic Court
 Dublin, Ohio 43016
 Phone (614)794-6457 • Chris@TebbeCivil.Com

C:\USERS\CTEBBE\ONE\DRIVE\PROJECTS\1000\SY\1000 - ASHVILLE STREETS 2018\CORRES\DWGS AND PDFS\1000_STREET PAVING (NEW ORTHO).DWG 4/26/2019 10:40:01 AM CTtebbe

VILLAGE OF ASHVILLE, OHIO
2019 STREET RESURFACING PROJECT

STREET: ASHTON VILLAGE PHASE 2
 IMPROVEMENTS: FULL DEPTH PAVEMENT REPLACEMENT, CRACK SEALING (FUTURE)
 WORK LIMITS: FROM: VARIES TO: VARIES
 BEGIN: _____ END: _____

CRACK SEAL

PAVEMENT WIDTH (MIN): 28 LF PAVEMENT AREA: 216790 SF
 PAVEMENT WIDTH (MAX): 31 LF
 PAVEMENT LENGTH: 7349 LF
 PROJECT AREA: 24088 SY
 (INCLUDES CONNECTING STREETS)

CONNECTING STREETS TO BE RESURFACED: _____ SY
 _____ SY
 _____ SY
 _____ SY
 _____ SY
 TOTAL: 0 SY

COMMENTS: _____

PAVEMENT DATA:

	ESTIMATED	COMMENTS:	ACTUAL
ITEM 204, SUBGRADE COMPACTION	28 SY		SY
ITEM 254, PAVEMENT PLANING, BITUMINOUS [1" AVERAGE]	SY		SY
ITEM 301, BITUMINOUS AGGREGATE BASE	CY @ 7-1/4" THICK		CY @ 7-1/4" THICK
ITEM 407, TACK COAT (APPLIED @0.25 GAL/SY)	GAL		GAL
* ITEM 422, DOUBLE CHIP SEAL	SY		SY
* ITEM 423, CRACK SEALING, TYPE III	SY		SY
ITEM 448, ASPHALT CONCRETE, SURFACE TYPE 1	CY @ 1-1/4" THICK		CY @ 1-1/4" THICK
ITEM 448, ASPHALT CONCRETE, INTERMEDIATE TYPE 2	CY @ 1-1/2" THICK		CY @ 1-1/2" THICK

ADDITIONAL ITEMS:

ITEM 202, PAVEMENT REMOVED	28 SY		SY
ITEM 253, FULL DEPTH PAVEMENT REPLACEMENT (12" DEPTH)	9 CY		CY
ITEM 609, COMBINATION CURB AND GUTTER	0 LF		LF
ITEM 644, STOP LINES, 20" WIDE	LF		LF
ITEM 644, CROSSWALK LINE, 10" WIDE	LF		LF

ITEM 604, MANHOLE ADJUSTED TO GRADE

ESTIMATED	
NUMBER OF MANHOLES	STATION

ACTUAL	
NUMBER OF MANHOLES	STATION

ITEM 604, MANHOLE ADJUSTED TO GRADE 0 EACH

ITEM 604, MANHOLE ADJUSTED TO GRADE _____ EACH

ITEM 604, CATCH BASIN ADJUSTED TO GRADE

ESTIMATED	
NUMBER OF CATCH BASINS	STATION

ACTUAL	
NUMBER OF CATCH BASINS	STATION

ITEM 604, CATCH BASIN ADJUSTED TO GRADE 0 EACH

ITEM 604, CATCH BASIN ADJUSTED TO GRADE _____ EACH

ITEM 807, VALVE BOX ADJUSTED TO GRADE

ESTIMATED	
NUMBER OF VALVE BOXES	STATION

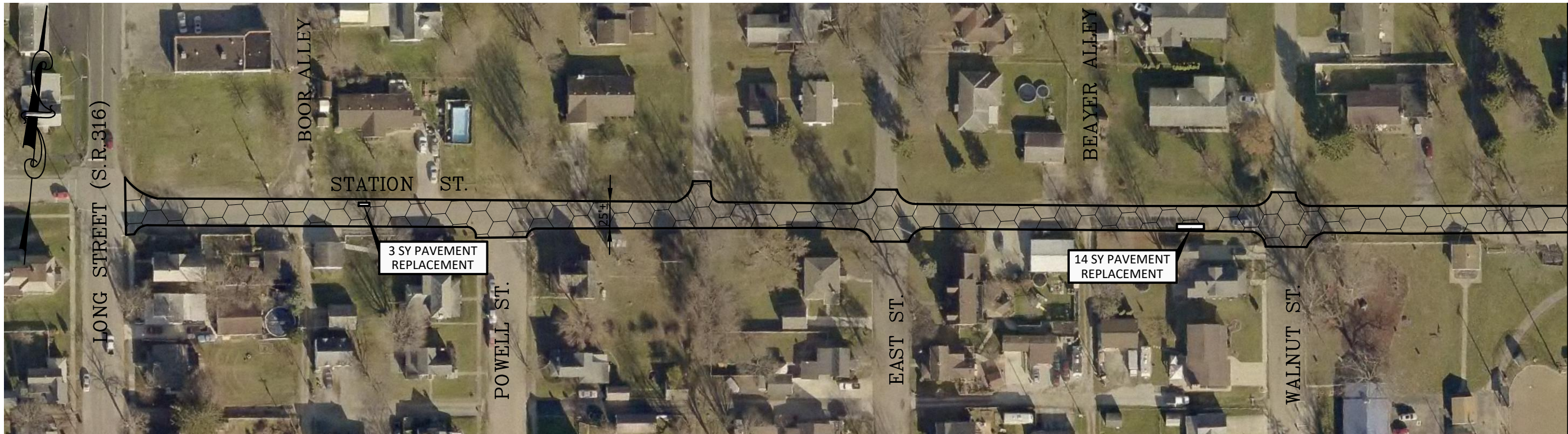
ACTUAL	
NUMBER OF VALVE BOXES	STATION

ITEM 807, VALVE BOX ADJUSTED TO GRADE 0 EACH

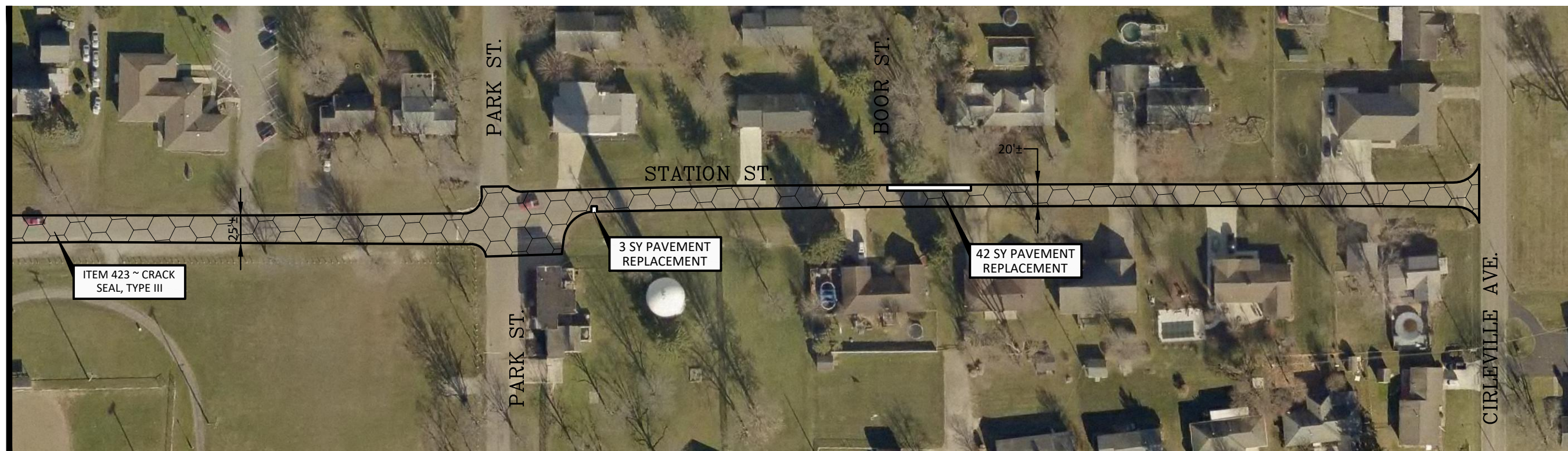
ITEM 807, VALVE BOX ADJUSTED TO GRADE _____ EACH

* REFERS TO OHIO DEPARTMENT OF TRANSPORTATION CONSTRUCTION AND MATERIAL SPECIFICATIONS

C:\USERS\CTEBBE\ONE\DRIVE\ICE\PROJECTS\1000\SY\1000 - ASHVILLE STREETS 2018\CORRES\2019 PRELIMINARY PAVING ITEMS\1000 - STREET PAVING (NEW ORTHO).DWG.5/21/2019 9:03:22 AM, Ctebbe



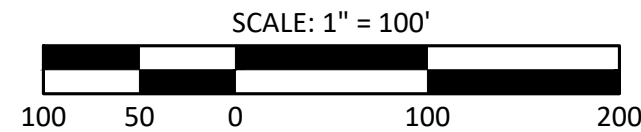
MATCHLINE, THIS SHEET



FUTURE PROJECT

ITEM 423 CRACK SEALING = 67,460 SF

FULL DEPTH PVMT = 62 SY



MATCHLINE, THIS SHEET

CRACK SEAL EXHIBIT
 ASHVILLE STREET PAVING PROJECT
 STATION STREET
 VILLAGE OF ASHVILLE, OHIO

REVISIONS	

JOB NO.	1000
DRAWN BY	MJM
DESIGN BY	CMT
CHECKED BY	CMT

VILLAGE OF ASHVILLE, OHIO
2019 STREET RESURFACING PROJECT

STREET: STATION STREET CRACK SEAL
 IMPROVEMENTS: FULL DEPTH PAVEMENT REPLACEMENT, CRACK SEALING (FUTURE)
 WORK LIMITS: FROM: LONG STREET BEGIN: _____
 TO: CIRCLEVILLE AVENUE END: _____

PAVEMENT WIDTH (MIN): 21 LF PAVEMENT AREA: 67640 SF
 PAVEMENT WIDTH (MAX): 26 LF
 PAVEMENT LENGTH: 2660 LF

PROJECT AREA: 7516 SY
 (INCLUDES CONNECTING STREETS)

CONNECTING STREETS TO BE RESURFACED: LONG, POWELL, EAST, WALNUT, PARK & CIRCLEVILLE AVENUE 570 SY
 _____ SY
 _____ SY
 _____ SY
 _____ SY
 TOTAL: 570 SY

COMMENTS:

PAVEMENT DATA:

	ESTIMATED	COMMENTS:	ACTUAL
ITEM 204, SUBGRADE COMPACTION	62 SY		SY
ITEM 254, PAVEMENT PLANING, BITUMINOUS [1" AVERAGE]	SY		SY
ITEM 301, BITUMINOUS AGGREGATE BASE	CY @ 7-1/4" THICK		CY @ 7-1/4" THICK
ITEM 407, TACK COAT (APPLIED @0.25 GAL/SY)	GAL		GAL
* ITEM 422, DOUBLE CHIP SEAL	SY		SY
* ITEM 423, CRACK SEALING, TYPE III	SY		SY
ITEM 448, ASPHALT CONCRETE, SURFACE TYPE 1	CY @ 1-1/4" THICK		CY @ 1-1/4" THICK
ITEM 448, ASPHALT CONCRETE, INTERMEDIATE TYPE 2	CY @ 1-1/2" THICK		CY @ 1-1/2" THICK

ADDITIONAL ITEMS:

ITEM 202, PAVEMENT REMOVED	62 SY		SY
ITEM 253, FULL DEPTH PAVEMENT REPLACEMENT (12" DEPTH)	21 CY		CY
ITEM 609, COMBINATION CURB AND GUTTER	0 LF		LF
ITEM 644, STOP LINES, 20" WIDE	LF		LF
ITEM 644, CROSSWALK LINE, 10" WIDE	LF		LF

ITEM 604, MANHOLE ADJUSTED TO GRADE

ESTIMATED	
NUMBER OF MANHOLES	STATION

ITEM 604, MANHOLE ADJUSTED TO GRADE 0 EACH

ACTUAL	
NUMBER OF MANHOLES	STATION

ITEM 604, MANHOLE ADJUSTED TO GRADE _____ EACH

ITEM 604, CATCH BASIN ADJUSTED TO GRADE

ESTIMATED	
NUMBER OF CATCH BASINS	STATION

ITEM 604, CATCH BASIN ADJUSTED TO GRADE 0 EACH

ACTUAL	
NUMBER OF CATCH BASINS	STATION

ITEM 604, CATCH BASIN ADJUSTED TO GRADE _____ EACH

ITEM 807, VALVE BOX ADJUSTED TO GRADE

ESTIMATED	
NUMBER OF VALVE BOXES	STATION

ITEM 807, VALVE BOX ADJUSTED TO GRADE 0 EACH

ACTUAL	
NUMBER OF VALVE BOXES	STATION

ITEM 807, VALVE BOX ADJUSTED TO GRADE _____ EACH

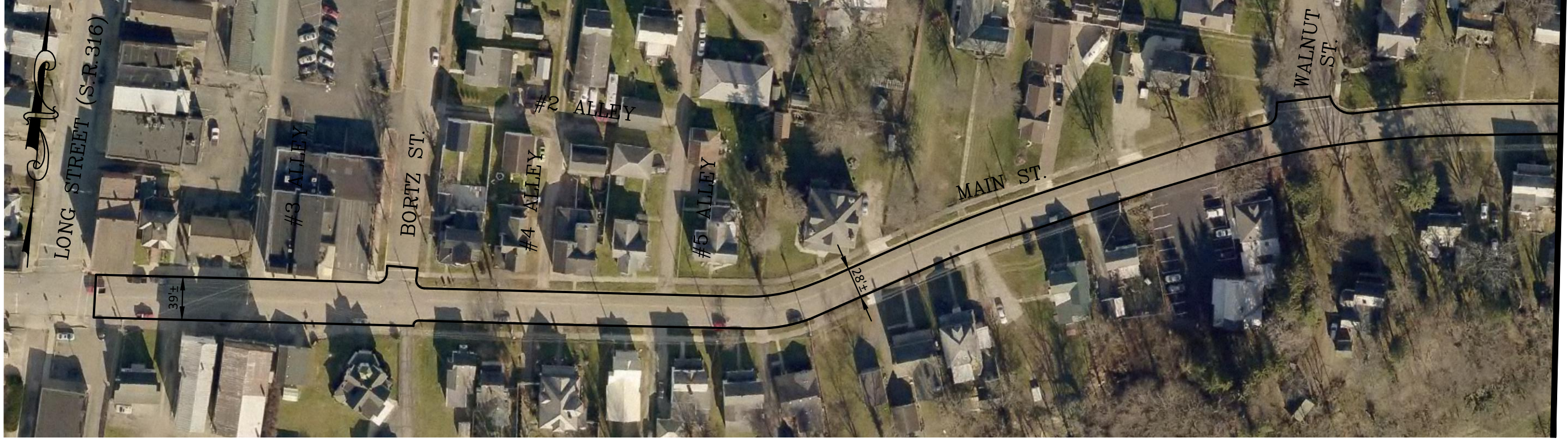
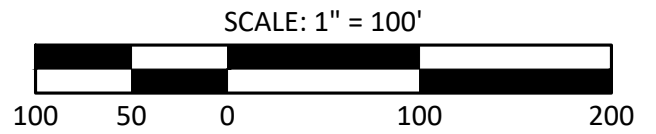
* REFERS TO OHIO DEPARTMENT OF TRANSPORTATION CONSTRUCTION AND MATERIAL SPECIFICATIONS

C:\USERS\CTEBBE\ONE\DRIVE\PROJECTS\1000\1\000 - ASHVILLE STREETS 2018\CORRES\2019 PAVING\1000 - STREET PAVING (NEW ORT HO)\DWG\6/21/2019 8:29:51 AM.ctb

MATCHLINE, THIS SHEET



FULL DEPTH
PVTM = 40 SY



MATCHLINE, THIS SHEET

CRACK SEAL EXHIBIT
ASHVILLE STREET PAVING PROJECT
 EAST MAIN STREET
 VILLAGE OF ASHVILLE, OHIO

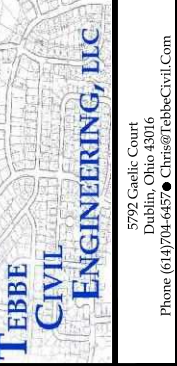
REVISIONS	

JOB NO.	1000
DRAWN BY	MJM
DESIGN BY	CMT
CHECKED BY	CMT

SHEET

1

OF 1



VILLAGE OF ASHVILLE, OHIO
2019 STREET RESURFACING PROJECT

STREET: EAST MAIN STREET CRACK SEAL
 IMPROVEMENTS: CRACK SEALING, FULL DEPTH PAVEMENT REPLACEMENT
 WORK LIMITS: FROM: LONG STREET BEGIN: _____
 TO: CIRCLEVILLE AVENUE END: _____

PAVEMENT WIDTH (MIN): 28 LF PAVEMENT AREA: 84730 SF
 PAVEMENT WIDTH (AVG): 32 LF
 PAVEMENT LENGTH: 2718 LF

PROJECT AREA: 9414 SY
 (INCLUDES CONNECTING STREETS)

CONNECTING STREETS TO BE RESURFACED: LONG, BORTZ, WALNUT, SCHOOL, PARK, MAPLE & CIRCLEVILLE AVE 425 SY
 _____ SY
 _____ SY
 _____ SY
 _____ SY
 TOTAL: 425 SY

COMMENTS:

PAVEMENT DATA:

	ESTIMATED	COMMENTS:	ACTUAL
ITEM 204, SUBGRADE COMPACTION	40 SY	_____	_____ SY
ITEM 254, PAVEMENT PLANING, BITUMINOUS [1" AVERAGE]	_____ SY	_____	_____ SY
ITEM 301, BITUMINOUS AGGREGATE BASE	_____ CY @ 7-1/4" THICK	_____	_____ CY @ 7-1/4" THICK
ITEM 407, TACK COAT (APPLIED @0.25 GAL/SY)	_____ GAL	_____	_____ GAL
* ITEM 422, DOUBLE CHIP SEAL	_____ SY	_____	_____ SY
* ITEM 423, CRACK SEALING, TYPE III	_____ SY	_____	_____ SY
ITEM 448, ASPHALT CONCRETE, SURFACE TYPE 1	_____ CY @ 1-1/4" THICK	_____	_____ CY @ 1-1/4" THICK
ITEM 448, ASPHALT CONCRETE, INTERMEDIATE TYPE 2	_____ CY @ 1-1/2" THICK	_____	_____ CY @ 1-1/2" THICK

ADDITIONAL ITEMS:

ITEM 202, PAVEMENT REMOVED	40 SY	_____	_____ SY
ITEM 253, FULL DEPTH PAVEMENT REPLACEMENT (12" DEPTH)	13 CY	_____	_____ CY
ITEM 609, COMBINATION CURB AND GUTTER	0 LF	_____	_____ LF
ITEM 644, STOP LINES, 20" WIDE	_____ LF	_____	_____ LF
ITEM 644, CROSSWALK LINE, 10" WIDE	_____ LF	_____	_____ LF

ITEM 604, MANHOLE ADJUSTED TO GRADE

ESTIMATED	
NUMBER OF MANHOLES	STATION

ITEM 604, MANHOLE ADJUSTED TO GRADE 0 EACH

ACTUAL	
NUMBER OF MANHOLES	STATION

ITEM 604, MANHOLE ADJUSTED TO GRADE _____ EACH

ITEM 604, CATCH BASIN ADJUSTED TO GRADE

ESTIMATED	
NUMBER OF CATCH BASINS	STATION

ITEM 604, CATCH BASIN ADJUSTED TO GRADE 0 EACH

ACTUAL	
NUMBER OF CATCH BASINS	STATION

ITEM 604, CATCH BASIN ADJUSTED TO GRADE _____ EACH

ITEM 807, VALVE BOX ADJUSTED TO GRADE

ESTIMATED	
NUMBER OF VALVE BOXES	STATION

ITEM 807, VALVE BOX ADJUSTED TO GRADE 0 EACH

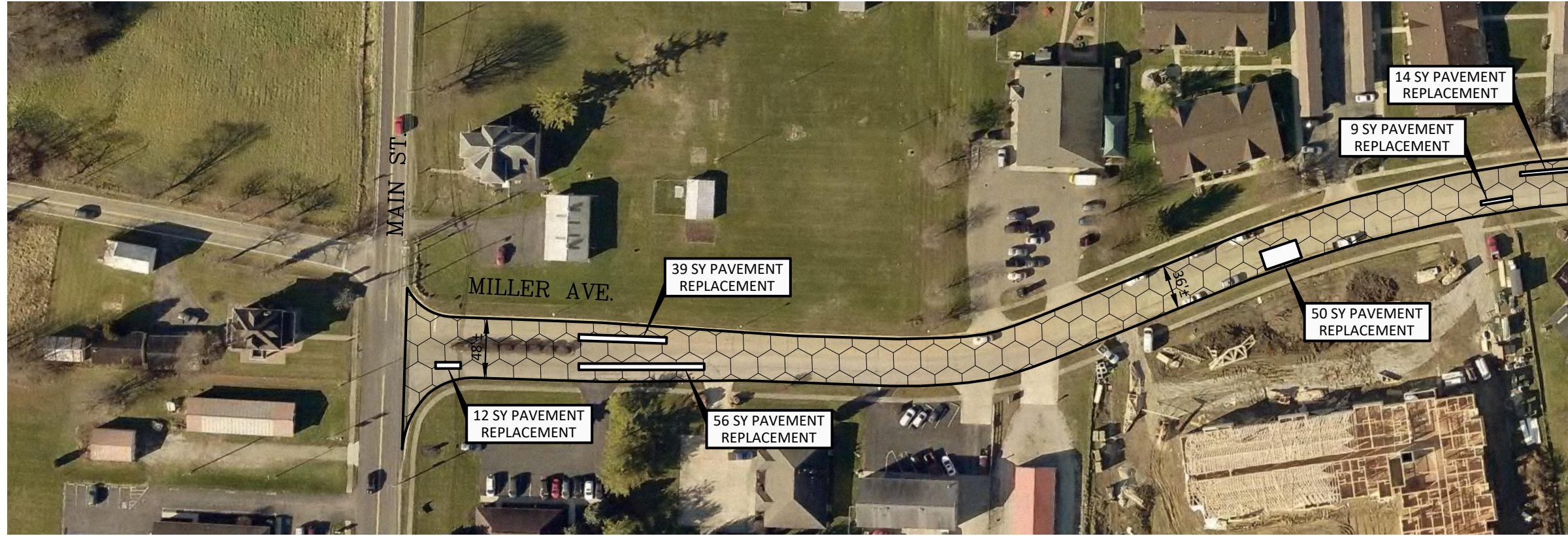
ACTUAL	
NUMBER OF VALVE BOXES	STATION

ITEM 807, VALVE BOX ADJUSTED TO GRADE _____ EACH

* REFERS TO OHIO DEPARTMENT OF TRANSPORTATION CONSTRUCTION AND MATERIAL SPECIFICATIONS

C:\USERS\CTEBBE\ONE\DRIVE\T\PROJECTS\1000\S\1000 - ASHVILLE STREETS 2018\CORRES\DWGS AND PDFS\1000_STREET PAVING (NEW ORTHO).DWG 4/26/2019 10:40:20 AM - Ctebbe

MATCHLINE, THIS SHEET



MATCHLINE, THIS SHEET

FUTURE PROJECT

ITEM 423 CRACK SEALING = 83,440 SF

FULL DEPTH PVMT = 284 SY



SCALE: 1" = 100'



CRACK SEAL EXHIBIT
ASHVILLE STREET PAVING PROJECT
 MILLER AVENUE
 VILLAGE OF ASHVILLE, OHIO



5792 Gaelic Court
 Dublin, Ohio 43016
 Phone: (614)704-6457 • Chris@TebbeCivil.Com

REVISIONS	

JOB NO.	1000
DRAWN BY	MJM
DESIGN BY	CMT
CHECKED BY	CMT

VILLAGE OF ASHVILLE, OHIO
2019 STREET RESURFACING PROJECT

STREET: MILLER AVENUE CRACK SEAL
 IMPROVEMENTS: FULL DEPTH PAVEMENT REPLACEMENT, CRACK SEALING (FUTURE)
 WORK LIMITS: FROM: EAST MAIN STREET BEGIN: _____
 TO: SR 752 END: _____

PAVEMENT WIDTH (MIN): 36 LF PAVEMENT AREA: 83440 SF
 PAVEMENT WIDTH (AVG): 40 LF
 PAVEMENT LENGTH: 2190 LF

PROJECT AREA: 9271 SY
 (INCLUDES CONNECTING STREETS)

CONNECTING STREETS TO BE RESURFACED: WEST MAIN STREET 50 SY COMMENTS: _____
 _____ SY _____
 _____ SY _____
 _____ SY _____
 _____ SY _____
 TOTAL: 50 SY

PAVEMENT DATA:

	ESTIMATED	COMMENTS:	ACTUAL
ITEM 204, SUBGRADE COMPACTION	284 SY	_____	_____ SY
ITEM 254, PAVEMENT PLANING, BITUMINOUS [1" AVERAGE]	_____ SY	_____	_____ SY
ITEM 301, BITUMINOUS AGGREGATE BASE	_____ CY @ 7-1/4" THICK	_____	_____ CY @ 7-1/4" THICK
ITEM 407, TACK COAT (APPLIED @0.25 GAL/SY)	_____ GAL	_____	_____ GAL
* ITEM 422, DOUBLE CHIP SEAL	_____ SY	_____	_____ SY
* ITEM 423, CRACK SEALING, TYPE III	_____ SY	_____	_____ SY
ITEM 448, ASPHALT CONCRETE, SURFACE TYPE 1	_____ CY @ 1-1/4" THICK	_____	_____ CY @ 1-1/4" THICK
ITEM 448, ASPHALT CONCRETE, INTERMEDIATE TYPE 2	_____ CY @ 1-1/2" THICK	_____	_____ CY @ 1-1/2" THICK

ADDITIONAL ITEMS:

ITEM 202, PAVEMENT REMOVED	284 SY	_____	_____ SY
ITEM 253, FULL DEPTH PAVEMENT REPLACEMENT (12" DEPTH)	95 CY	_____	_____ CY
ITEM 609, COMBINATION CURB AND GUTTER	0 LF	_____	_____ LF
ITEM 644, STOP LINES, 20" WIDE	_____ LF	_____	_____ LF
ITEM 644, CROSSWALK LINE, 10" WIDE	_____ LF	_____	_____ LF

ITEM 604, MANHOLE ADJUSTED TO GRADE

ESTIMATED	
NUMBER OF MANHOLES	STATION

ITEM 604, MANHOLE ADJUSTED TO GRADE 0 EACH

ACTUAL	
NUMBER OF MANHOLES	STATION

ITEM 604, MANHOLE ADJUSTED TO GRADE _____ EACH

ITEM 604, CATCH BASIN ADJUSTED TO GRADE

ESTIMATED	
NUMBER OF CATCH BASINS	STATION

ITEM 604, CATCH BASIN ADJUSTED TO GRADE 0 EACH

ACTUAL	
NUMBER OF CATCH BASINS	STATION

ITEM 604, CATCH BASIN ADJUSTED TO GRADE _____ EACH

ITEM 807, VALVE BOX ADJUSTED TO GRADE

ESTIMATED	
NUMBER OF VALVE BOXES	STATION

ITEM 807, VALVE BOX ADJUSTED TO GRADE 0 EACH

ACTUAL	
NUMBER OF VALVE BOXES	STATION

ITEM 807, VALVE BOX ADJUSTED TO GRADE _____ EACH

* REFERS TO OHIO DEPARTMENT OF TRANSPORTATION CONSTRUCTION AND MATERIAL SPECIFICATIONS