

Water Resource Recovery Facility Ashtville Sanitary Sewer Improvements 2016/17 – Part B - Paving

WRRF **Job No: 60440011**



12/4/2017 1
fppt.com

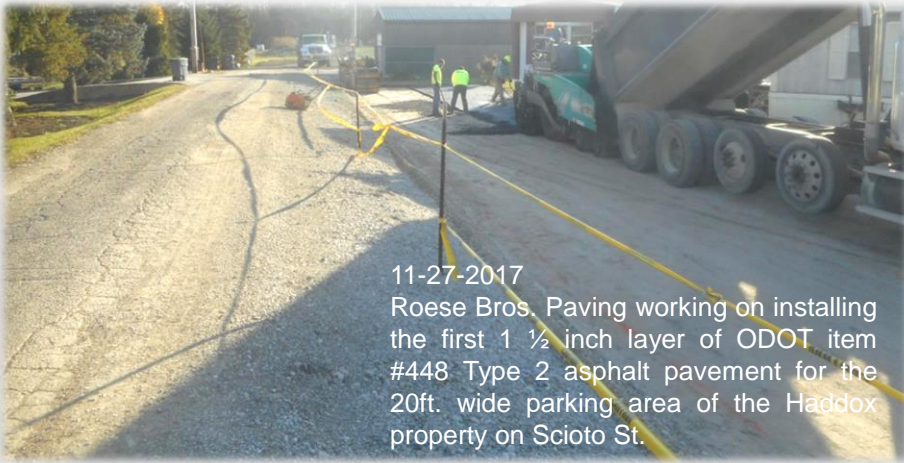
WRRF Part B - Paving



Before

12/4/2017 2
fppt.com

WRRF Part B - Paving



11-27-2017
Roese Bros. Paving working on installing the first 1 1/2 inch layer of ODOT item #448 Type 2 asphalt pavement for the 20ft. wide parking area of the Haddox property on Scioto St.

12/4/2017

3
fppt.com

WRRF Part B - Paving



Before



12/4/2017

4
fppt.com

WRRF Part B - Paving



Before

12/4/2017



5
fppt.com

WRRF Part B - Paving



After

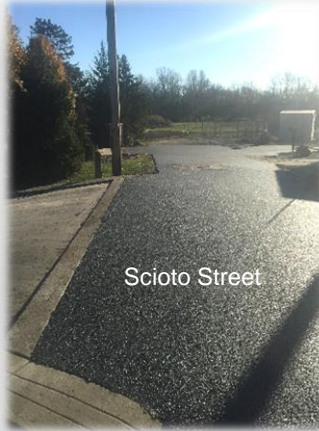


12/4/2017



6
fppt.com

WRRF Part B - Paving



After

12/4/2017

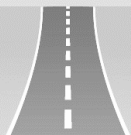


7
fppt.com

WRRF Part B - Paving

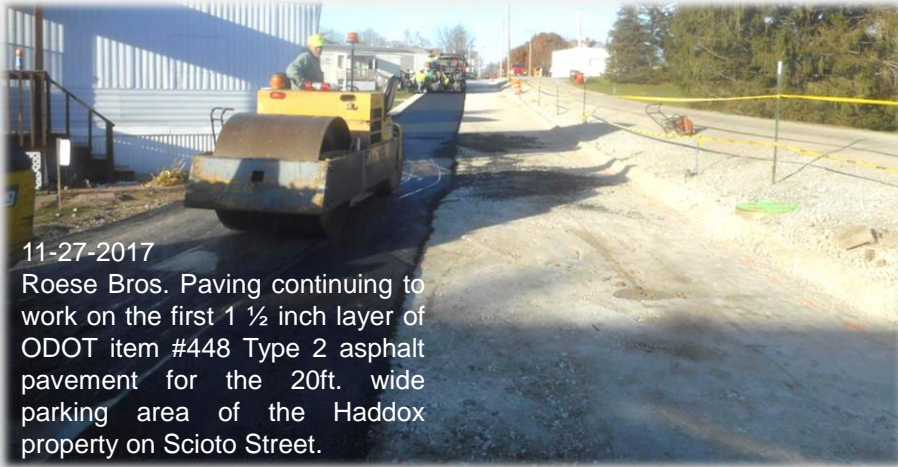


12/4/2017



8
fppt.com

WRRF Part B - Paving



12/4/2017

9

fppt.com

WRRF Part B - Paving



Before

12/4/2017

10

fppt.com

WRRF Part B - Paving



11-29-2017

The new asphalt pavement on Scioto Street looking North from the entrance to the old WWTTP.

12/4/2017



11

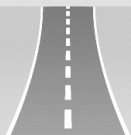
fppt.com

WRRF Part B - Paving



After

12/4/2017



12

fppt.com

WRRF Part B - Paving



11-28-2017

Roese Bros. Paving installed the first 1 1/2" layer of ODOT item #448 type 2 asphalt pavement for the additional parking spaces at the Haddox property on Scioto Street.

12/4/2017



13

fppt.com

WRRF Part B - Paving



After

12/4/2017



14

fppt.com

WRRF Part B - Paving



11-29-2017

Roese Bros. Paving installing the surface course of new asphalt pavement for the 20ft. wide driveway parking area of the Haddox Property on Scioto Street.

12/4/2017

15

fppt.com

WRRF Part B - Paving



Scioto Street



Scioto Street



Scioto Street

Before

12/4/2017

16

fppt.com

WRRF Part B - Paving



Before

12/4/2017

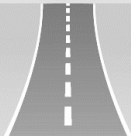


17
fppt.com

WRRF Part B - Paving



12/4/2017



18
fppt.com

WRRF Part B - Paving



After

12/4/2017

19
fppt.com

WRRF Part B - Paving



11-29-2017
The new asphalt paving for Scioto St and the Haddox
Property looking South.

12/4/2017

20
fppt.com

WRRF Part B - Paving



Before

12/4/2017



21
fppt.com

WRRF Part B - Paving



After

12/4/2017



22
fppt.com

WRRF Part B - Paving



After

12/4/2017

23
fppt.com

WRRF Part B - Paving



In Process

12/4/2017

24
fppt.com

WRRF Part B - Paving



After

12/4/2017



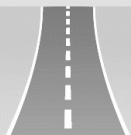
25
fppt.com

WRRF Part B - Paving



Before

12/4/2017



26
fppt.com

WRRF Part B - Paving



12/4/2017



27

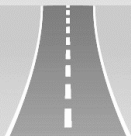
fppt.com

WRRF Part B - Paving



Before

12/4/2017



28

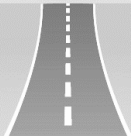
fppt.com

WRRF Part B - Paving



11-27-2017
 Roose Bros. Paving continuing to work on grading and preparing the sewer trench line on Scioto Street for the new asphalt pavement.

12/4/2017



29
fppt.com

WRRF Part B - Paving



Before

12/4/2017



30
fppt.com

WRRF Part B - Paving



11-28-2017

Roese Bros. Paving installing the first course of the new asphalt pavement in the sewer trench line on Scioto Street from Main Street to Rich Street.

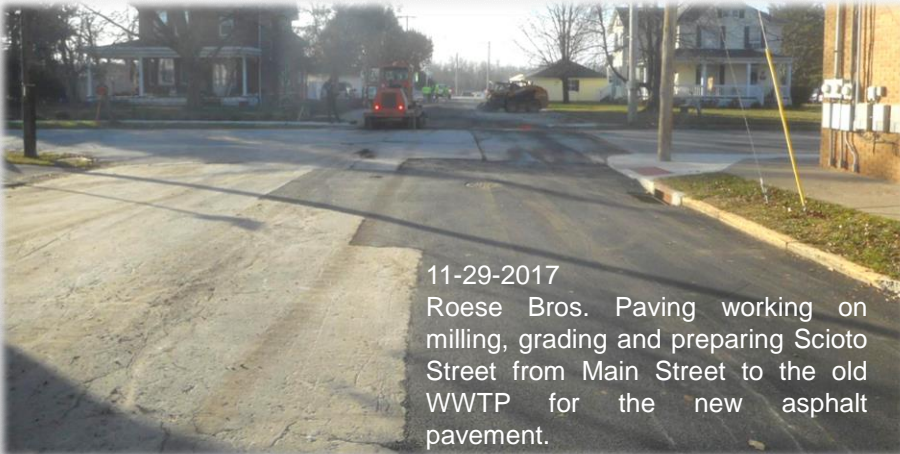
12/4/2017



31

fppt.com

WRRF Part B - Paving



11-29-2017

Roese Bros. Paving working on milling, grading and preparing Scioto Street from Main Street to the old WWTP for the new asphalt pavement.

12/4/2017



32

fppt.com

WRRF Part B - Paving



11-29-2017
 Roese Bros. installing the new asphalt pavement across Main Street on Scioto Street.

12/4/2017

33
fppt.com

WRRF Part B - Paving



Scioto Street



Rich Street



Scioto Street

Rich Street

Before



Scioto Street

12/4/2017

34
fppt.com

WRRF Part B - Paving



11-28-2017
Roese Bros. Paving installed the first course of new asphalt pavement on Scioto Street from Main Street to Rich Street.

12/4/2017



35
fppt.com

WRRF Part B - Paving



Scioto Street

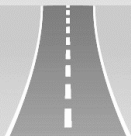


Scioto Street

Rich Street

After

12/4/2017



36
fppt.com

WRRF Part B - Paving



11-28-2017

Roose Bros. Paving installing the first course of new asphalt pavement on Rich Street from Scioto Street to Jefferson Avenue.

12/4/2017

37

fppt.com

WRRF Part B - Paving



Scioto Street

Rich Street



Scioto Street

Rich Street



Rich Street

Scioto Street

After

12/4/2017

38

fppt.com

WRRF Part B - Paving



11-28-2017

Roose Bros. Paving installed the second course of new asphalt pavement on Scioto Street from Main Street to Rich Street and Rich Street from Scioto Street to Jefferson Avenue. This photo is looking West to Jefferson Avenue on Rich Street from Scioto Street.

12/4/2017



39

fppt.com

WRRF Part B - Paving

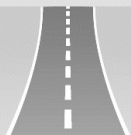


Rich Street



Rich Street

12/4/2017



40

fppt.com

WRRF Part B - Paving



12-01-2017

Roesé Bros. Paving working on milling the sewer trench line on Rich Street from Jefferson Avenue to Roger Alley getting ready for the new asphalt pavement.

12/4/2017



41

fppt.com

WRRF Part B - Paving



12-01-2017

Roesé Bros. Paving installing the new asphalt pavement repair for the sewer trench line on Rich Street from Jefferson Avenue to Roger Alley.

12/4/2017



42

fppt.com

WRRF Part B - Paving



In Process

12/4/2017



43

fppt.com

WRRF Part B - Paving



In Process

12/4/2017



44

fppt.com

WRRF Part B - Paving



11-30-2017

Rose Bros. Paving running the milling machine on Madison Street in preparation for the 2" of new asphalt pavement.

12/4/2017



45

fppt.com

WRRF Part B - Paving



11-30-2017

The 2" overlay of new asphalt pavement on Madison Street from Roger Alley to Lexington Avenue.

12/4/2017



46

fppt.com

WRRF Part B - Paving



In Process

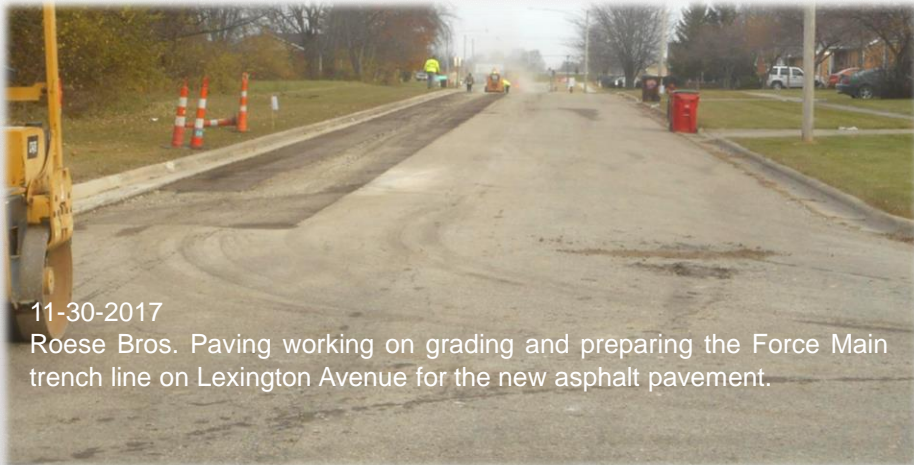
12/4/2017



47

fppt.com

WRRF Part B - Paving



12/4/2017



48

fppt.com

WRRF Part B - Paving



In Process

12/4/2017

49

fppt.com

WRRF Part B - Paving



11-30-2017

Roese Bros. Paving installing 2" of new asphalt pavement over the Force Main trench line on Lexington Avenue.

12/4/2017

50

fppt.com

WRRF Part B - Paving



In Process

12/4/2017



51

fppt.com

WRRF Part B - Paving



After

12/4/2017



52

fppt.com

WRRF Part B - Paving



After

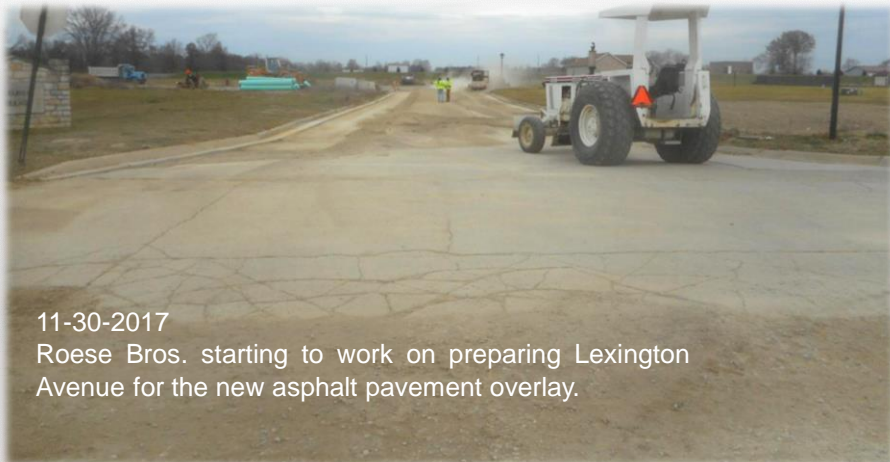


12/4/2017

53

fppt.com

WRRF Part B - Paving



12/4/2017

54

fppt.com

WRRF Part B - Paving



Before

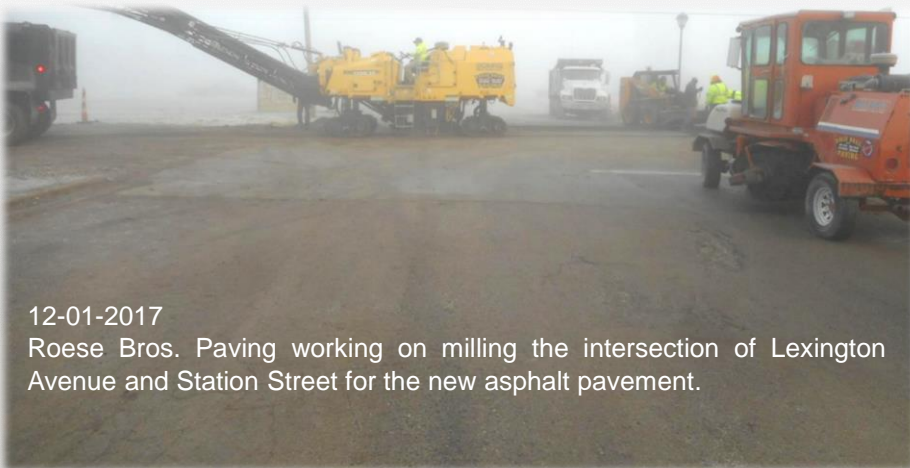
12/4/2017



55

fppt.com

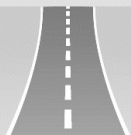
WRRF Part B - Paving



12-01-2017

Roese Bros. Paving working on milling the intersection of Lexington Avenue and Station Street for the new asphalt pavement.

12/4/2017



56

fppt.com

WRRF Part B - Paving



12/4/2017

57
fppt.com

WRRF Part B - Paving



12-01-2017

Roese Bros. Paving installing the new asphalt pavement at the intersection of Lexington Avenue and Station Street.

12/4/2017

58
fppt.com

WRRF Part B - Paving



In Process

12/4/2017

59

fppt.com

WRRF Part B - Paving



12-01-2017

Roese Bros. Paving installing the 1 1/2" asphalt pavement overlay on Lexington Avenue from Station Street the May Avenue.

12/4/2017

60

fppt.com

WRRF Part B - Paving



After

12/4/2017



61

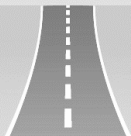
fppt.com

WRRF Part B - Paving



After

12/4/2017



62

fppt.com