


# Construction in Photos

February 1 - 28, 2017

Water Resource Recovery Department  
Village of Ashville  
Ashville's Water Resource Recovery Facility  
Part B - Job No: 60440011

Presentation Available on Line at:  
[www.ashvilleohio.gov](http://www.ashvilleohio.gov)



# Ashville's WRRF Project

## Construction Aerial Photo



**Effluent Line**

- January 2-13 mobilization & materials
- January 16 or 18 construction begins at South & Rich Street (Site #1)
- January 29 Rich Street & Rodger Alley (Site #4)
- January 23 on 26 Lexington Avenue & May Street East south of Ader 18 at Ader 20)
- February 14 Rodger Alley & Madison Avenue (Site #10)
- February 22 Rodger Alley & Griggs Street (Site #11)
- March 1 Rodger Alley & West Station Street (Site #12)

**Force Mains**

- February 20 Rich Street & Schies Street
- March 14 Rich Street & Lexington Avenue
- March 19 Lexington Avenue & Madison Avenue
- March 19 Lexington Avenue & Griggs Street
- March 21 Lexington Avenue & West Station Street

**Force Mains**

Village of Ashville Water Resource Recovery Facility

# Ashville's WRRF Project

## Construction in Photos

- February 1, 2017
- Crew #1 installing more 24" SDR-35 effluent sewer pipe from MH#9A to MH#10 going North along Roger Alley.



# Ashville's WRRF Project

## Construction in Photos

- February 1, 2017
- Crew #1 continuing to install the 24" SDR-35 effluent sewer pipe from MH#9A to MH#10 North along Roger Alley.



# Ashville's WRRF Project

## Construction in Photos

- February 1, 2017
- Crew #1 found this unmarked 3" clay tile drain line will installing the 24" SDR-35 effluent sewer pipe at Sta. 24+40 between MH#9A and MH#10. This line was repaired using 5 ft. of 4" SDR-35 PVC pipe and 2 - 4" Fernco Couplings.



# Ashville's WRRF Project

## Construction in Photos

- February 1, 2017
- Crew #2 installing more 18" SDR-35 sewer pipe, #57 bedding and compacted backfill from MH#19 to MH#20.



## Ashville's WRRF Project

Construction in Photos



- February 1, 2017
- Crew #2 continuing to install the 18" SDR-35 PVC sewer pipe, #57 bedding and getting ready to start installing #304 compacted granular backfill at about Sta. 4+50 between MH#19 and MH#20.

## Ashville's WRRF Project

Construction in Photos



- February 2, 2017
- Crew #2 installing more 18" SDR-35 PVC sewer pipe between MH#19 and MH#20.

## Ashville's WRRF Project

Construction in Photos



- February 2, 2017
- Crew #1 continuing to install the 24" SDR-35 PVC effluent sewer between MH#9A and MH#10-North along Roger Alley.

## Ashville's WRRF Project

Construction in Photos



- February 2, 2017
- This photo shows the 18" clay storm sewer (temporarily repaired) running East to West on Madison Ave. That has created a conflict with the installation of the 24" effluent sewer running North along Roger Alley at the intersection of Madison Ave. and Roger Alley. Notice the 8" PVC water main in the foreground.

## Ashville's WRRF Project

Construction in Photos



- February 2, 2017
- Fields crew #2 installing the last section of 18" SDR-35 sewer pipe and setting the base section of MH#20.

## Ashville's WRRF Project

Construction in Photos



- February 2, 2017
- Crew #2 installing another riser section of MH#20.

## Ashville's WRRF Project



### Construction in Photos



- February 6, 2017
- Crew #1 setting the cone section of MH#10 and getting ready to start installing the 24" SDR-35 effluent sewer North on Roger Alley to MH#11.

## Ashville's WRRF Project



### Construction in Photos

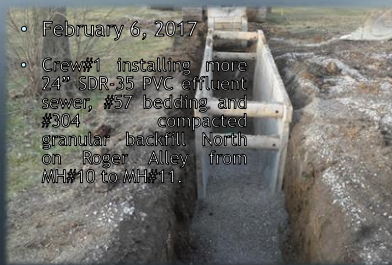


- February 6, 2017
- Crew #1 installing the first 14 ft. section of 24" SDR-35 effluent sewer from MH#10 going North on Roger Alley to MH#11.

## Ashville's WRRF Project



### Construction in Photos

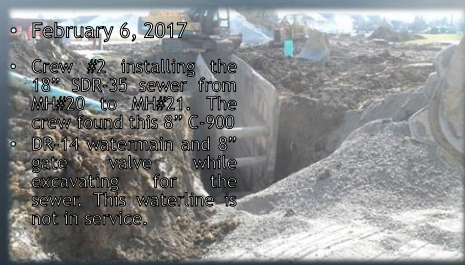


- February 6, 2017
- Crew#1 installing more 24" SDR-35 PVC effluent sewer, #57 bedding and #304 compacted granular backfill North on Roger Alley from MH#10 to MH#11.

## Ashville's WRRF Project



### Construction in Photos

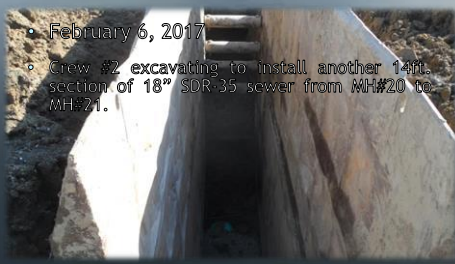


- February 6, 2017
- Crew #2 installing the 18" SDR-35 sewer from MH#20 to MH#21. The crew found this 8" C-900 DR-14 watermain and 8" gate valve while excavating for the sewer. This waterline is not in service.

## Ashville's WRRF Project



### Construction in Photos

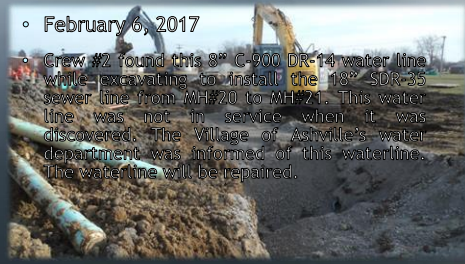


- February 6, 2017
- Crew #2 excavating to install another 14ft. section of 18" SDR-35 sewer from MH#20 to MH#21.

## Ashville's WRRF Project



### Construction in Photos



- February 6, 2017
- Crew #2 found this 8" C-900 DR-14 water line while excavating to install the 18" SDR-35 sewer line from MH#20 to MH#21. This water line was not in service when it was discovered. The Village of Ashville's water department was informed of this waterline. The water line will be repaired.

## Ashville's WRRF Project



### Construction in Photos

- February 8, 2017

- Crew #2 excavating to start installing the 18" SDR-35 sewer line from MH#20 to MH#21.



## Ashville's WRRF Project



### Construction in Photos

- February 8, 2017

- Crew #2 installing another 14ft. section of 18" SDR-35 PVC sewer line from MH#20 to MH#21.



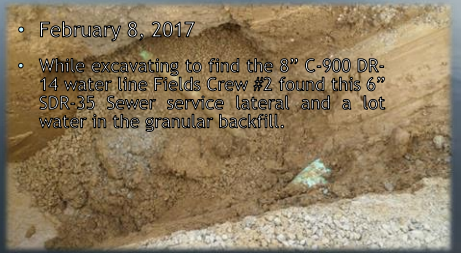
## Ashville's WRRF Project



### Construction in Photos

- February 8, 2017

- While excavating to find the 8" C-900 DR-14 water line Fields Crew #2 found this 6" SDR-35 Sewer service lateral and a lot of water in the granular backfill.



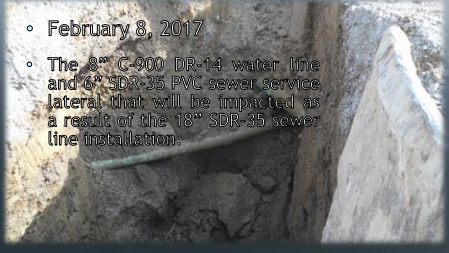
## Ashville's WRRF Project



### Construction in Photos

- February 8, 2017

- The 8" C-900 DR-14 water line and 6" SDR-35 PVC sewer service lateral that will be impacted as a result of the 18" SDR-35 sewer line installation.



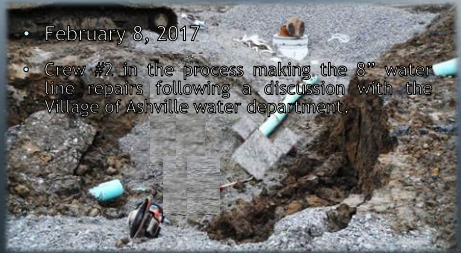
## Ashville's WRRF Project



### Construction in Photos

- February 8, 2017

- Crew #2 in the process making the 8" water line repairs following a discussion with the Village of Ashville water department.



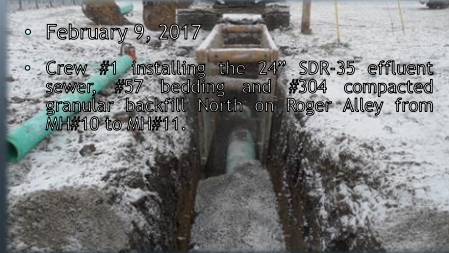
## Ashville's WRRF Project



### Construction in Photos

- February 9, 2017

- Crew #1 installing the 24" SDR-35 effluent sewer, #57 bedding and #304 compacted granular backfill North on Roger Alley from MH#10 to MH#11.



## Ashville's WRRF Project



### Construction in Photos

- February 9, 2017
- Crew #1 installing another 14ft. section of 24" SDR-35 effluent sewer from MH#10 to MH#11 going North on Roger alley.

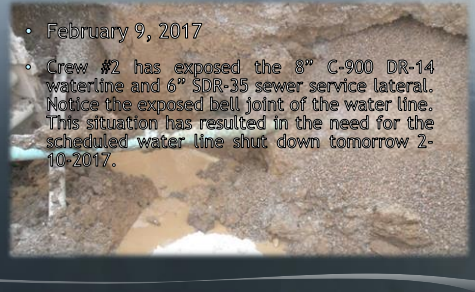


## Ashville's WRRF Project



### Construction in Photos

- February 9, 2017
- Crew #2 has exposed the 8" C-900 DR-14 waterline and 6" SDR-35 sewer service lateral. Notice the exposed bell joint of the water line. This situation has resulted in the need for the scheduled water line shut down tomorrow 2-10-2017.

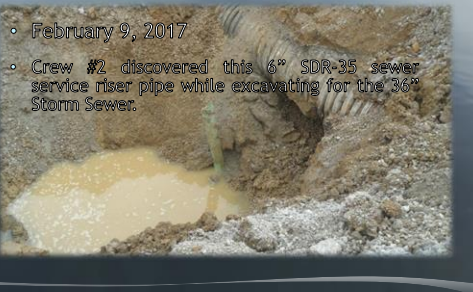


## Ashville's WRRF Project



### Construction in Photos

- February 9, 2017
- Crew #2 discovered this 6" SDR-35 sewer service riser pipe while excavating for the 36" Storm Sewer.

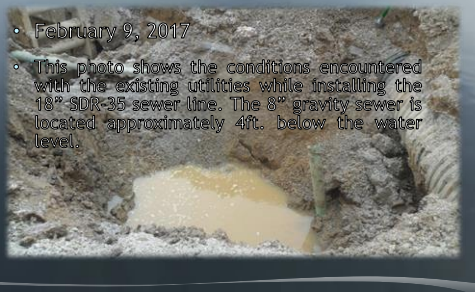


## Ashville's WRRF Project



### Construction in Photos

- February 9, 2017
- This photo shows the conditions encountered with the existing utilities while installing the 18" SDR-35 sewer line. The 8" gravity sewer is located approximately 4ft. below the water level.



## Ashville's WRRF Project



### Construction in Photos

- February 10, 2017
- Crew #1 continuing to install the 24" SDR-35 effluent sewer line with #57 bedding and #304 compacted granular backfill from MH#10 to MH#11.

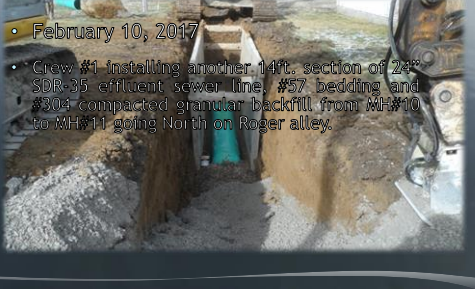


## Ashville's WRRF Project



### Construction in Photos

- February 10, 2017
- Crew #1 installing another 14ft. section of 24" SDR-35 effluent sewer line, #57 bedding and #304 compacted granular backfill from MH#10 to MH#11 going North on Roger alley.

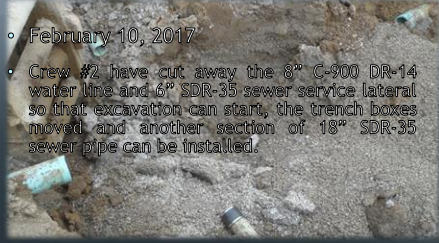


## Ashville's WRRF Project



### Construction in Photos

- February 10, 2017
- Crew #2 have cut away the 8" C-900 DR-14 water line and 6" SDR-35 sewer service lateral so that excavation can start, the trench boxes moved and another section of 18" SDR-35 sewer pipe can be installed.

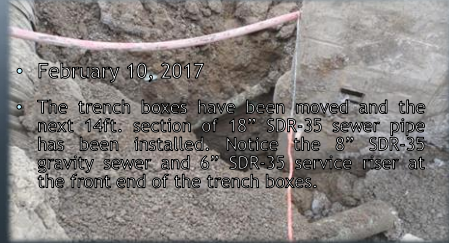


## Ashville's WRRF Project



### Construction in Photos

- February 10, 2017
- The trench boxes have been moved and the next 14ft. section of 18" SDR-35 sewer pipe has been installed. Notice the 8" SDR-35 gravity sewer and 6" SDR-35 service riser at the front end of the trench boxes.

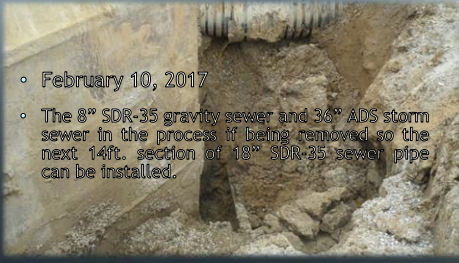


## Ashville's WRRF Project



### Construction in Photos

- February 10, 2017
- The 8" SDR-35 gravity sewer and 36" ADS storm sewer in the process of being removed so the next 14ft. section of 18" SDR-35 sewer pipe can be installed.

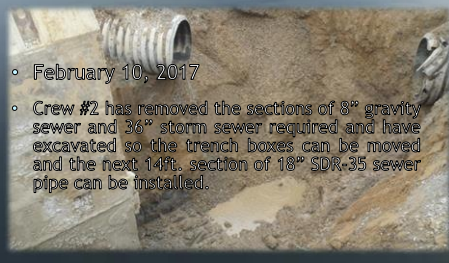


## Ashville's WRRF Project



### Construction in Photos

- February 10, 2017
- Crew #2 has removed the sections of 8" gravity sewer and 36" storm sewer required and have excavated so the trench boxes can be moved and the next 14ft. section of 18" SDR-35 sewer pipe can be installed.

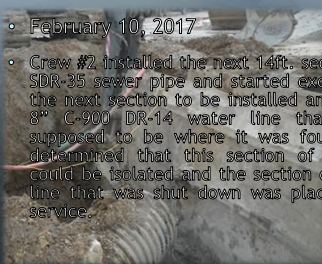


## Ashville's WRRF Project



### Construction in Photos

- February 10, 2017
- Crew #2 installed the next 14ft. section of 18" SDR-35 sewer pipe and started excavating for the next section to be installed and found an 8" C-900 DR-14 water line that was not supposed to be where it was found. It was determined that this section of water line could be isolated and the section of 8" water line that was shut down was placed back in service.



## Ashville's WRRF Project



### Construction in Photos

- February 13, 2017
- Crew #1 set MH#11 and are installing the 24" SDR-35 effluent sewer North on Roger Alley to MH#12.



**Ashville's WRRF Project**

**Construction in Photos**

- February 13, 2017
- Crew #1 found and repaired a 6" clay tile drain line located at Sta. 32+25 located 106ft. North of MH#11 with 6" SDR-35 PVC pipe.



**Ashville's WRRF Project**

**Construction in Photos**

- February 13, 2017
- Crew #2 repairing the 8" SDR-35 PVC gravity sewer and installing the 8 x 6 SDR-35 wye, 6" SDR-35 45-degree elbow and 6" SDR-35 PVC riser pipe.



**Ashville's WRRF Project**

**Construction in Photos**

- February 13, 2017
- Crew #2 installing the first section of 18" SDR-35 sewer near MH#21 at the intersection of Lexington Ave and May Ave.



**Ashville's WRRF Project**

**Construction in Photos**

- February 13, 2017
- Crew #2 installing the first section of the manhole trench box and getting ready to start installing base section of MH#21.



**Ashville's WRRF Project**

**Construction in Photos**

- February 13, 2017
- Crew #2 repairing the 36" MH#12 ADS storm sewer near MH#21.



**Ashville's WRRF Project**

**Construction in Photos**

- February 14, 2017
- Crew #1 crossed under some electrical conduit while installing the 24" SDR-35 sewer from MH#11 to MH#12 North on Roger Alley.



## Ashville's WRRF Project



### Construction in Photos

- February 14, 2017
- Crew #1 continuing to install the 24" SDR-35 effluent sewer from MH#11 to MH#12 going North on Roger Alley.



## Ashville's WRRF Project



### Construction in Photos

- February 14, 2017
- Crew #1 installing another section of 24" SDR-35 sewer North on Roger Alley from MH#11 to MH#12.



## Ashville's WRRF Project



### Construction in Photos

- February 14, 2017
- Crew #2 are finishing the installation of MH#21 on Lexington Ave.

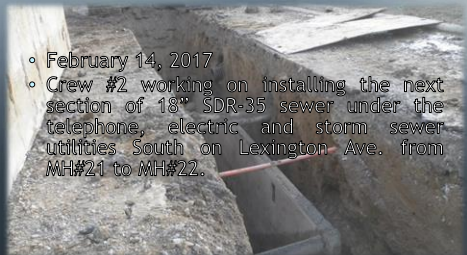


## Ashville's WRRF Project



### Construction in Photos

- February 14, 2017
- Crew #2 working on installing the next section of 18" SDR-35 sewer under the telephone, electric and storm sewer utilities South on Lexington Ave. from MH#21 to MH#22.



## Ashville's WRRF Project



### Construction in Photos

- February 14, 2017
- Crew #2 installing the next section of 18" SDR-35 sewer South on Lexington Ave. from MH#21 to MH#22.



## Ashville's WRRF Project



### Construction in Photos

- February 15, 2017
- Crew #1 continuing to install the 24" SDR-35 effluent sewer from MH#11 to MH#12 North on Roger Alley.





## Ashville's WRRF Project



### Construction in Photos

- February 15, 2017
- Crew #1 excavating to install another section of 24" SDR-35 effluent sewer from MH#11 to MH#12 going North on Roger Alley.



## Ashville's WRRF Project



### Construction in Photos

- February 15, 2017
- Crew #1 excavating to install MH#12 at the corner of Roger Alley and Lexington Ave.



## Ashville's WRRF Project



### Construction in Photos

- February 15, 2017
- Crew #2 installing the 18" SDR-35 sewer from MH#21 to MH#22 South on Lexington Ave.

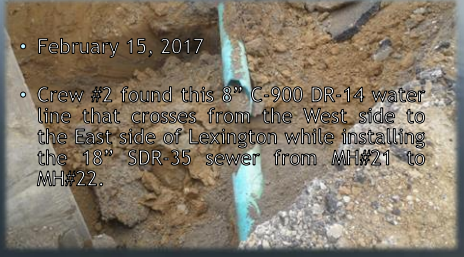


## Ashville's WRRF Project



### Construction in Photos

- February 15, 2017
- Crew #2 found this 8" C-900 DR-14 water line that crosses from the West side to the East side of Lexington while installing the 18" SDR 35 sewer from MH#21 to MH#22.

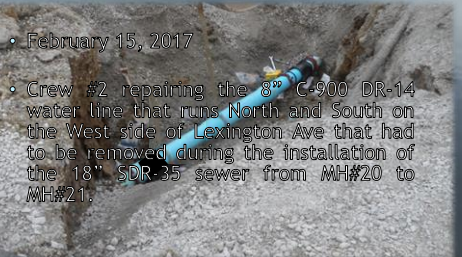


## Ashville's WRRF Project



### Construction in Photos

- February 15, 2017
- Crew #2 repairing the 8" C-900 DR-14 water line that runs North and South on the West side of Lexington Ave that had to be removed during the installation of the 18" SDR-35 sewer from MH#20 to MH#21.



## Ashville's WRRF Project



### Construction in Photos

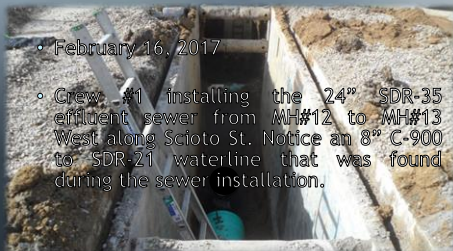
- February 16, 2017
- Crew #2 installed and backfilled MH#22 on Lexington Ave. and then cleaned up Lexington Ave.



## Ashville's WRRF Project



### Construction in Photos

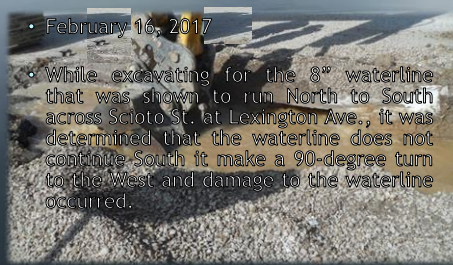


- February 16, 2017
- Crew #1 installing the 24" SDR-35 effluent sewer from MH#12 to MH#13 West along Scioto St. Notice an 8" C-900 to SDR-21 waterline that was found during the sewer installation.

## Ashville's WRRF Project



### Construction in Photos

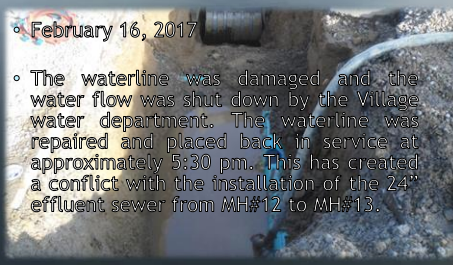


- February 16, 2017
- While excavating for the 8" waterline that was shown to run North to South across Scioto St. at Lexington Ave., it was determined that the waterline does not continue South it make a 90-degree turn to the West and damage to the waterline occurred.

## Ashville's WRRF Project



### Construction in Photos

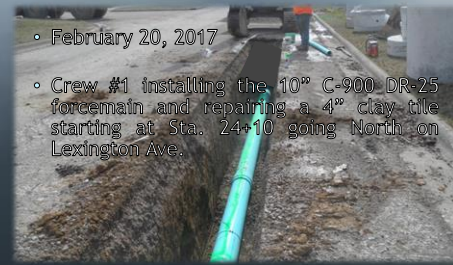


- February 16, 2017
- The waterline was damaged and the water flow was shut down by the Village water department. The waterline was repaired and placed back in service at approximately 5:30 pm. This has created a conflict with the installation of the 24" effluent sewer from MH#12 to MH#13.

## Ashville's WRRF Project



### Construction in Photos

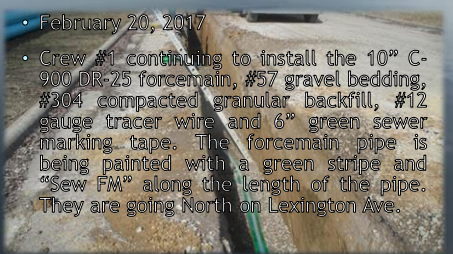


- February 20, 2017
- Crew #1 installing the 10" C-900 DR-25 forcemain and repairing a 4" clay tile starting at Sta. 24+10 going North on Lexington Ave.

## Ashville's WRRF Project



### Construction in Photos

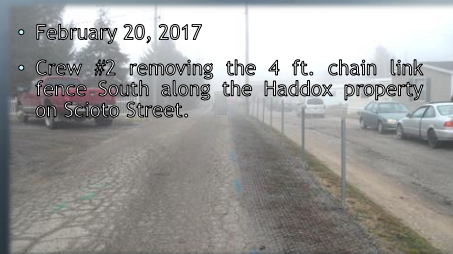


- February 20, 2017
- Crew #1 continuing to install the 10" C-900 DR-25 forcemain, #57 gravel bedding, #304 compacted granular backfill, #12 gauge tracer wire and 6" green sewer marking tape. The forcemain pipe is being painted with a green stripe and "Sew FM" along the length of the pipe. They are going North on Lexington Ave.

## Ashville's WRRF Project



### Construction in Photos

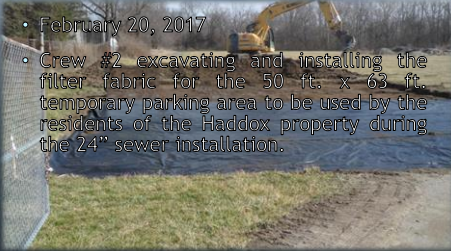


- February 20, 2017
- Crew #2 removing the 4 ft. chain link fence South along the Haddox property on Scioto Street.

## Ashville's WRRF Project

### Construction in Photos

- February 20, 2017
- Crew #2 excavating and installing the filter fabric for the 50-ft. x 63-ft. temporary parking area to be used by the residents of the Haddox property during the 24" sewer installation.



## Ashville's WRRF Project

### Construction in Photos

- February 20, 2017
- Crew #2 installing the 6" base of #304 granular material over the filter fabric in the 50-ft. x 63-ft. temporary parking area.



## Ashville's WRRF Project

### Construction in Photos

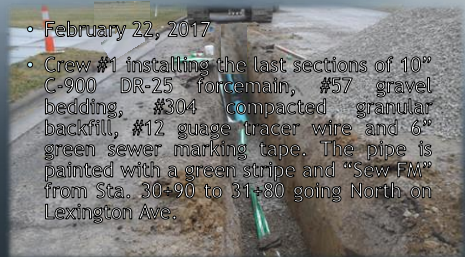
- February 20, 2017
- Crew #2 installing MH#2 and starting the 24" SDR-35 effluent sewer installation to MH#3.



## Ashville's WRRF Project

### Construction in Photos

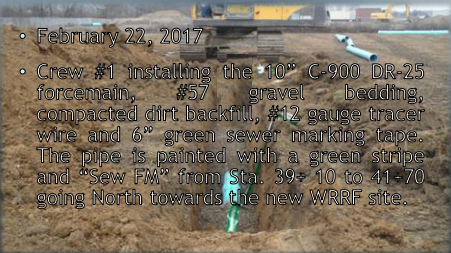
- February 22, 2017
- Crew #1 installing the last sections of 10" C-900 DR-25 forcemain, #57 gravel bedding, #304 compacted granular backfill, #12 gauge tracer wire and 6" green sewer marking tape. The pipe is painted with a green stripe and "Sew FM" from Sta. 30+90 to 31+80 going North on Lexington Ave.



## Ashville's WRRF Project

### Construction in Photos

- February 22, 2017
- Crew #1 installing the 10" C-900 DR-25 forcemain, #57 gravel bedding, compacted dirt backfill, #12 gauge tracer wire and 6" green sewer marking tape. The pipe is painted with a green stripe and "Sew FM" from Sta. 39+10 to 41+70 going North towards the new WRRF site.



## Ashville's WRRF Project

### Construction in Photos

- February 22, 2017
- Crew #2 excavating to install MH#4 on the Haddox property on Seloto Street.

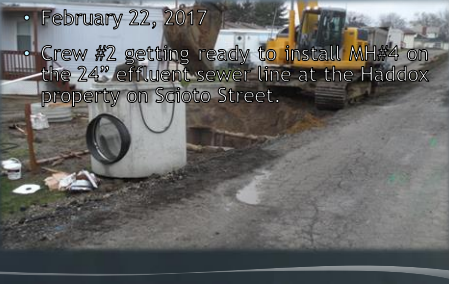


## Ashville's WRRF Project



### Construction in Photos

- February 22, 2017
- Crew #2 getting ready to install MH#4 on the 24" effluent sewer line at the Haddock property on Scioto Street.

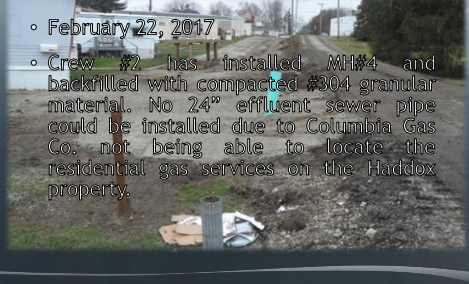


## Ashville's WRRF Project



### Construction in Photos

- February 22, 2017
- Crew #2 has installed MH#4 and backfilled with compacted #304 granular material. No 24" effluent sewer pipe could be installed due to Columbia Gas Co. not being able to locate the residential gas services on the Haddock property.



## Ashville's WRRF Project



### Construction in Photos

- February 23, 2017
- Crew #2 getting ready to install the last section of 24" SDR-35 effluent sewer from MH#2 and set MH#3 at the existing WWTP site.

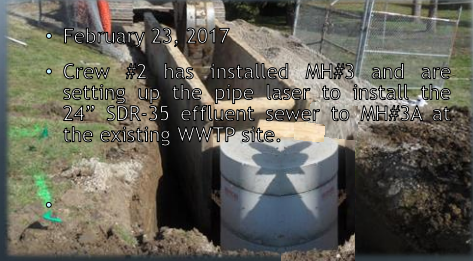


## Ashville's WRRF Project



### Construction in Photos

- February 23, 2017
- Crew #2 has installed MH#3 and are setting up the pipe laser to install the 24" SDR-35 effluent sewer to MH#3A at the existing WWTP site.

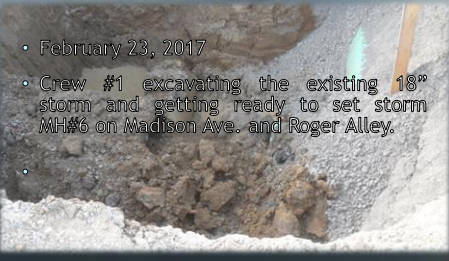


## Ashville's WRRF Project



### Construction in Photos

- February 23, 2017
- Crew #1 excavating the existing 18" storm and getting ready to set storm MH#6 on Madison Ave. and Roger Alley.



## Ashville's WRRF Project



### Construction in Photos

- February 23, 2017
- Crew #1 has set storm MH#6 and installed the first section of 18" SDR-35 storm sewer going West on Madison Ave at Roger Alley.



## Ashville's WRRF Project



### Construction in Photos

- February 23, 2017
- Crew #1 continuing to install the 18" SDR-35 storm sewer, #57 gravel bedding and #304 granular backfill West on Madison Ave.

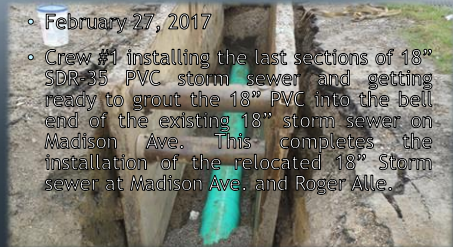


## Ashville's WRRF Project



### Construction in Photos

- February 27, 2017
- Crew #1 installing the last sections of 18" SDR-35 PVC storm sewer and getting ready to grout the 18" PVC into the bell end of the existing 18" storm sewer on Madison Ave. This completes the installation of the relocated 18" Storm sewer at Madison Ave. and Roger Alley.

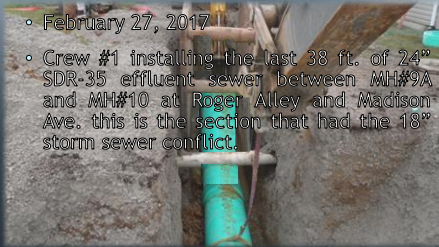


## Ashville's WRRF Project



### Construction in Photos

- February 27, 2017
- Crew #1 installing the last 38 ft. of 24" SDR-35 effluent sewer between MH#9A and MH#10 at Roger Alley and Madison Ave. this is the section that had the 18" storm sewer conflict.

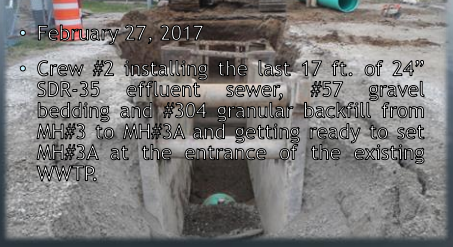


## Ashville's WRRF Project



### Construction in Photos

- February 27, 2017
- Crew #2 installing the last 17 ft. of 24" SDR-35 effluent sewer, #57 gravel bedding and #304 granular backfill from MH#3 to MH#3A and getting ready to set MH#3A at the entrance of the existing WWTP.

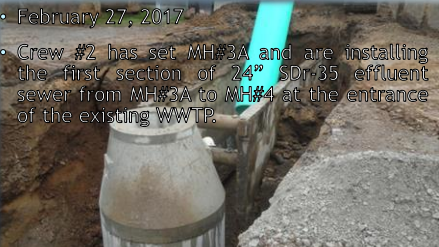


## Ashville's WRRF Project



### Construction in Photos

- February 27, 2017
- Crew #2 has set MH#3A and are installing the first section of 24" SDR-35 effluent sewer from MH#3A to MH#4 at the entrance of the existing WWTP.



## Ashville's WRRF Project



### Construction in Photos

- February 27, 2017
- Crew #2 found and repaired this 12" clay tile storm sewer at the entrance to the existing WWTP using 12" SDR-35 PVC pipe and 2 - 12" Femco Couplings.



Ohio Environmental Protection Agency DEFA Loan

Ohio Resource Recovery Authority

AECOM

Ohio Water Development Authority

Ashville Waterworks

Village of Ashville Sanitary Sewer Improvements Parts A & B  
Total Project Cost \$3,038,650.00

**THANK YOU**  
**AECOM, FIELDS, AND PETERSON**

**ASHVILLE**  
Vision Statement