

Construction in Photos

January 16 - 31, 2017

Water Resource Recovery Department Village of Ashville Ashville's Water Resource Recovery Facility Part B

Presentation Available on Line at:

www.ashvilleohio.gov



Ashville's WRRF Project



Vision Statement

- Remembering our rural heritage, Ashville will be a vibrant and friendly community, offering an enhanced quality of life achieved through planning, progress and collaboration.

It will be a welcoming place where people want to live and businesses prosper.

Ashville's WRRF Project



Construction Aerial Photo



For up-to-date information go to www.ashvilleohio.gov and click on the following image:



or call 740-983-6367



Village of Ashville West Side Alleys 1

Effluent Line

Time-line below:

- January 2-13 mobilization & materials
- January 16 or 18 construction begins at Scioto & Rich Street (MH 8)
- January 29 Rich Street & Rodger Alley (MH 9A)
- January 23 or 26 Lexington Avenue & May Street (just south of MH 18 at MH 20)
- February 14 Rodger Alley & Madison Avenue (MH 10)
- February 22 Rodger Alley & Griggs Street (MH 11)
- March 1 Rodger Alley & West Station Street (MH 12)

Force Main

Time-line below:

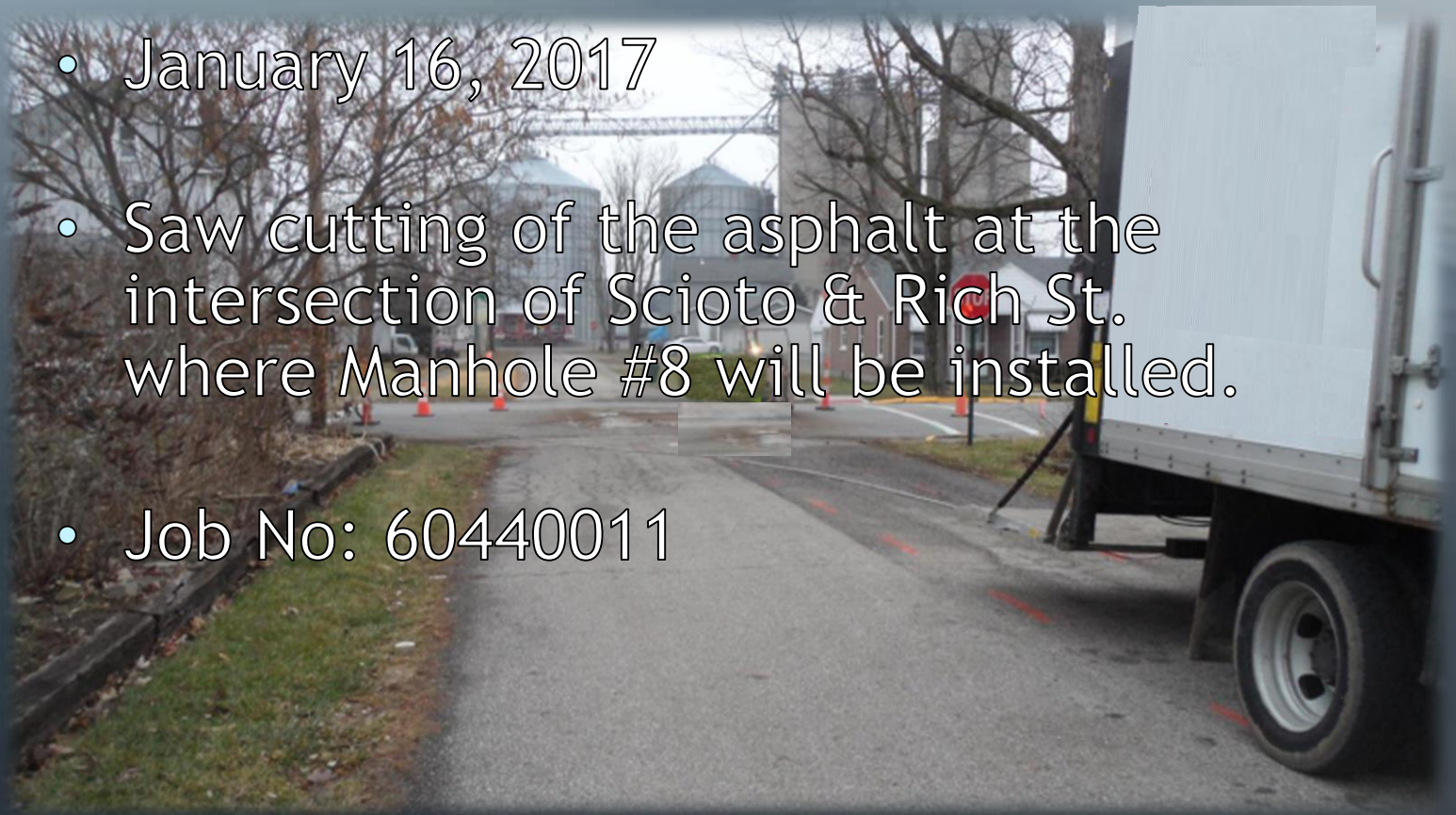
- February 21 Rich Street & Scioto Street
- March 5 Rich Street & Lexington Avenue
- March 12 Lexington Avenue & Madison Avenue
- March 19 Lexington Avenue & Griggs Street
- March 26 Lexington Avenue & West Station Street

Ashville's WRRF Project



Construction in Photos

- January 16, 2017
- Saw cutting of the asphalt at the intersection of Scioto & Rich St. where Manhole #8 will be installed.
- Job No: 60440011



Ashville's WRRF Project



Construction in Photos

- January 16, 2017
- Fields setting the base section of Manhole #8 at the intersection of Scioto & Rich St.
- Job No: 60440011



Ashville's WRRF Project



Construction in Photos



- January 16, 2017
- Manhole #8 set in place at the intersection of Scioto & Rich St.
- Job No: 60440011

Ashville's WRRF Project



Construction in Photos



- January 17, 2017
- Construction site condition following the installation of MH #8 at the intersection of Scioto & Rich St.
- Job No: 60440011

Ashville's WRRF Project



Construction in Photos



- January 17, 2017
- Construction site condition following the installation of MH #8 at the intersection of Scioto & Rich St.
- Job No: 60440011

Ashville's WRRF Project



Construction in Photos



- January 18, 2017
- Field's crew installing the 24" SDR-35 PVC effluent sewer from MH#8 to MH#9 going West on Rich St. from Scioto St.
- Job No: 60440011

Ashville's WRRF Project



Construction in Photos

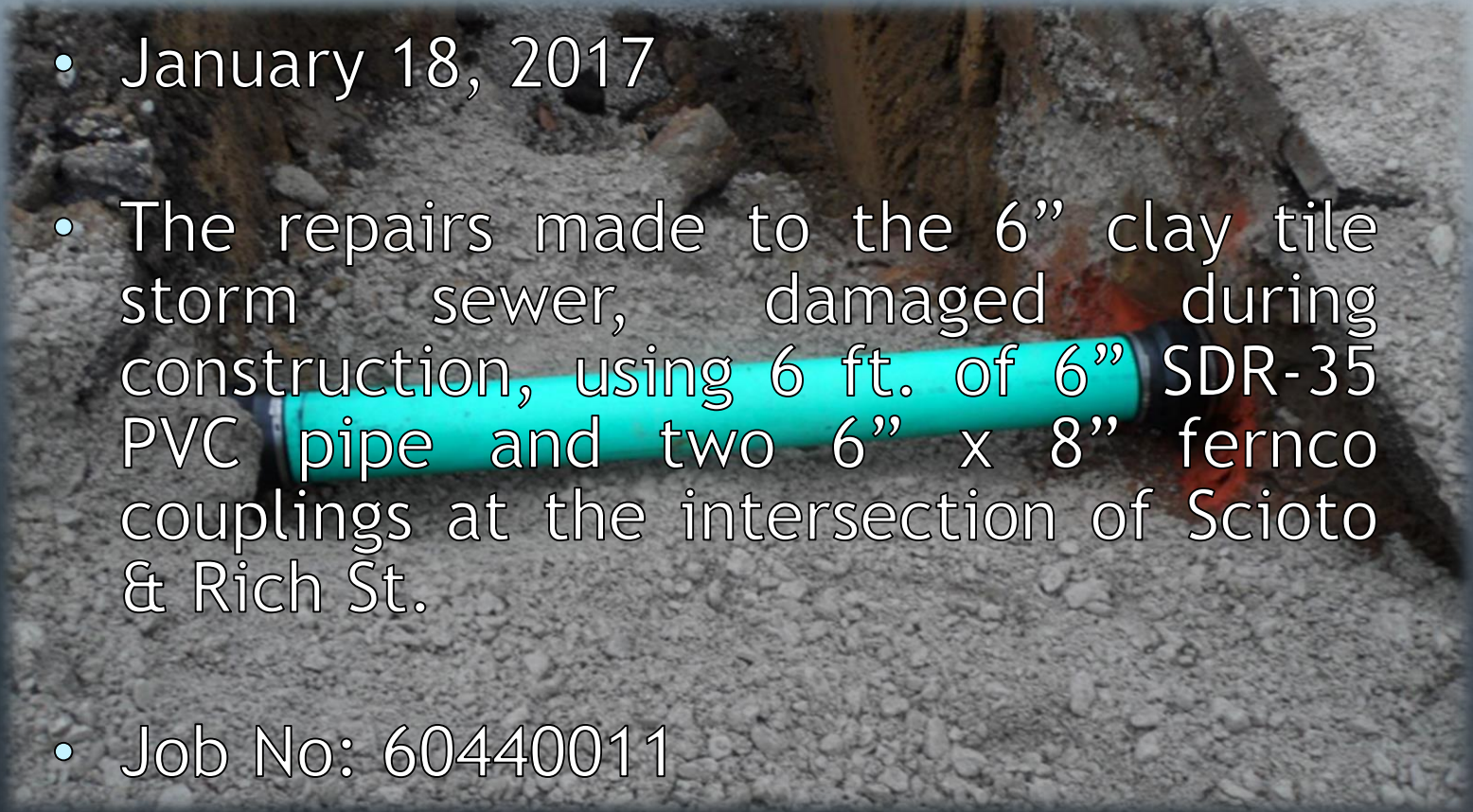
- January 18, 2017
- Field's crew continuing to install the 24" SDR-35 PVC effluent sewer from MH#8 to MH#9 going West on Rich St from Scioto St.
- Job No: 60440011



Ashville's WRRF Project



Construction in Photos

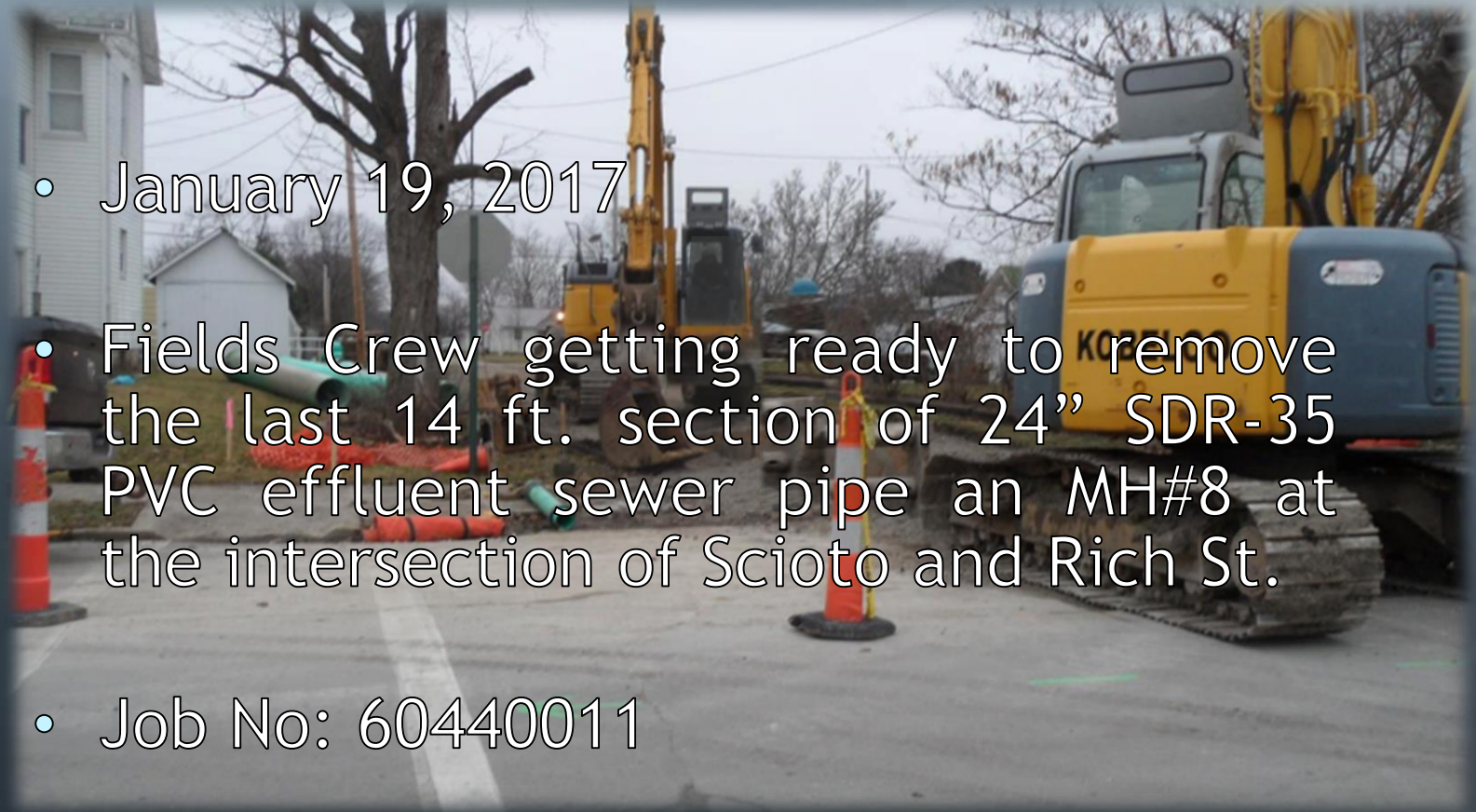


- January 18, 2017
- The repairs made to the 6" clay tile storm sewer, damaged during construction, using 6 ft. of 6" SDR-35 PVC pipe and two 6" x 8" ferenco couplings at the intersection of Scioto & Rich St.
- Job No: 60440011

Ashville's WRRF Project



Construction in Photos



- January 19, 2017
- Fields Crew getting ready to remove the last 14 ft. section of 24" SDR-35 PVC effluent sewer pipe and MH#8 at the intersection of Scioto and Rich St.
- Job No: 60440011

Ashville's WRRF Project



Construction in Photos

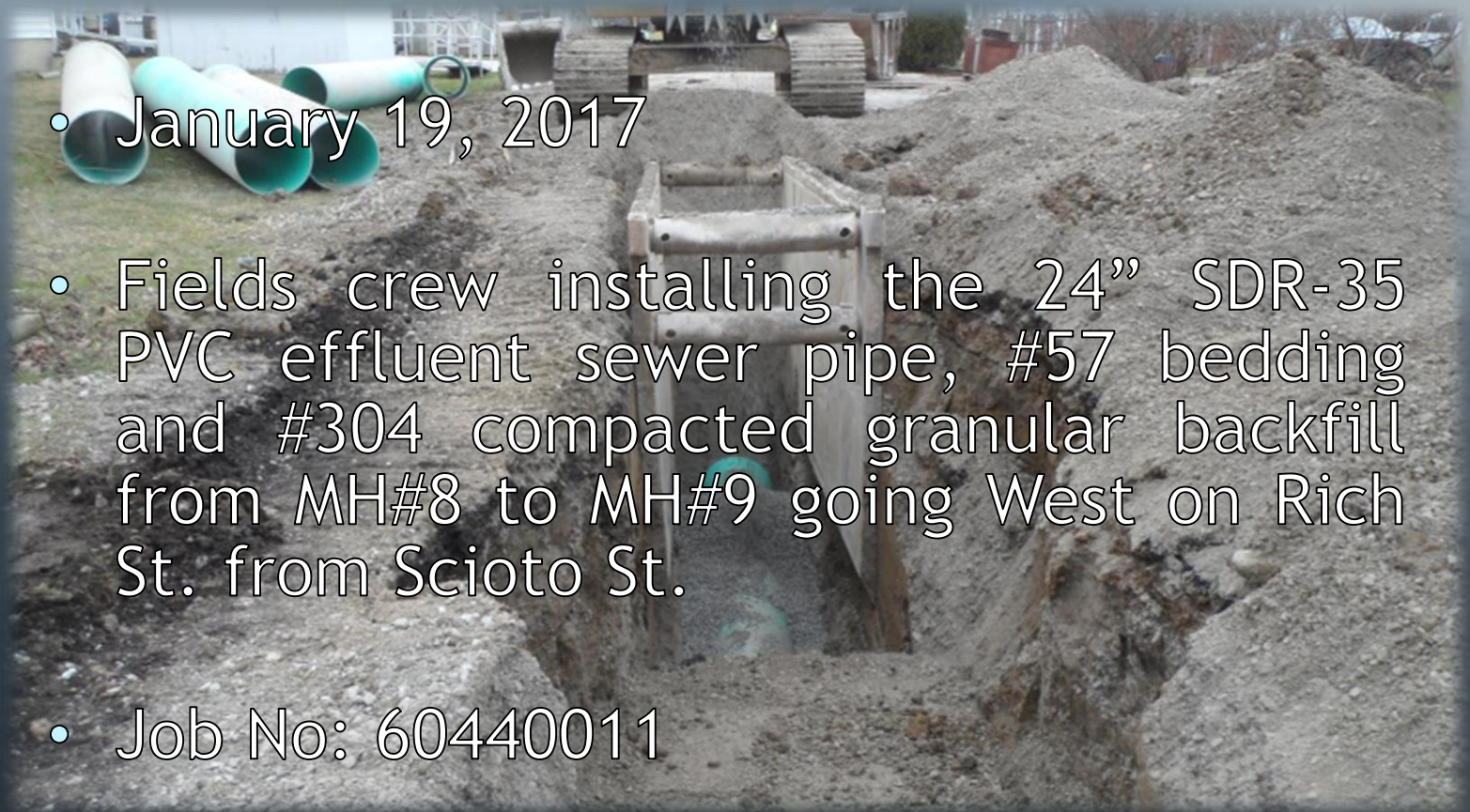


- January 19, 2017
- Manhole #8 has been reset to the proper elevation and Fields crew are getting ready to start laying the 24" SDR-35 PVC effluent sewer pipe from MH#8 to MH#9 going West on Rich St. from Scioto St.
- Job No: 60440011

Ashville's WRRF Project



Construction in Photos



- January 19, 2017
- Fields crew installing the 24" SDR-35 PVC effluent sewer pipe, #57 bedding and #304 compacted granular backfill from MH#8 to MH#9 going West on Rich St. from Scioto St.
- Job No: 60440011

Ashville's WRRF Project



Construction in Photos



- January 20, 2017
- Fields crew installing the 24" SDR-35 PVC effluent sewer pipe, #57 bedding and #304 compacted granular backfill going West on Rich St.
- Job No: 60440011

Ashville's WRRF Project



Construction in Photos

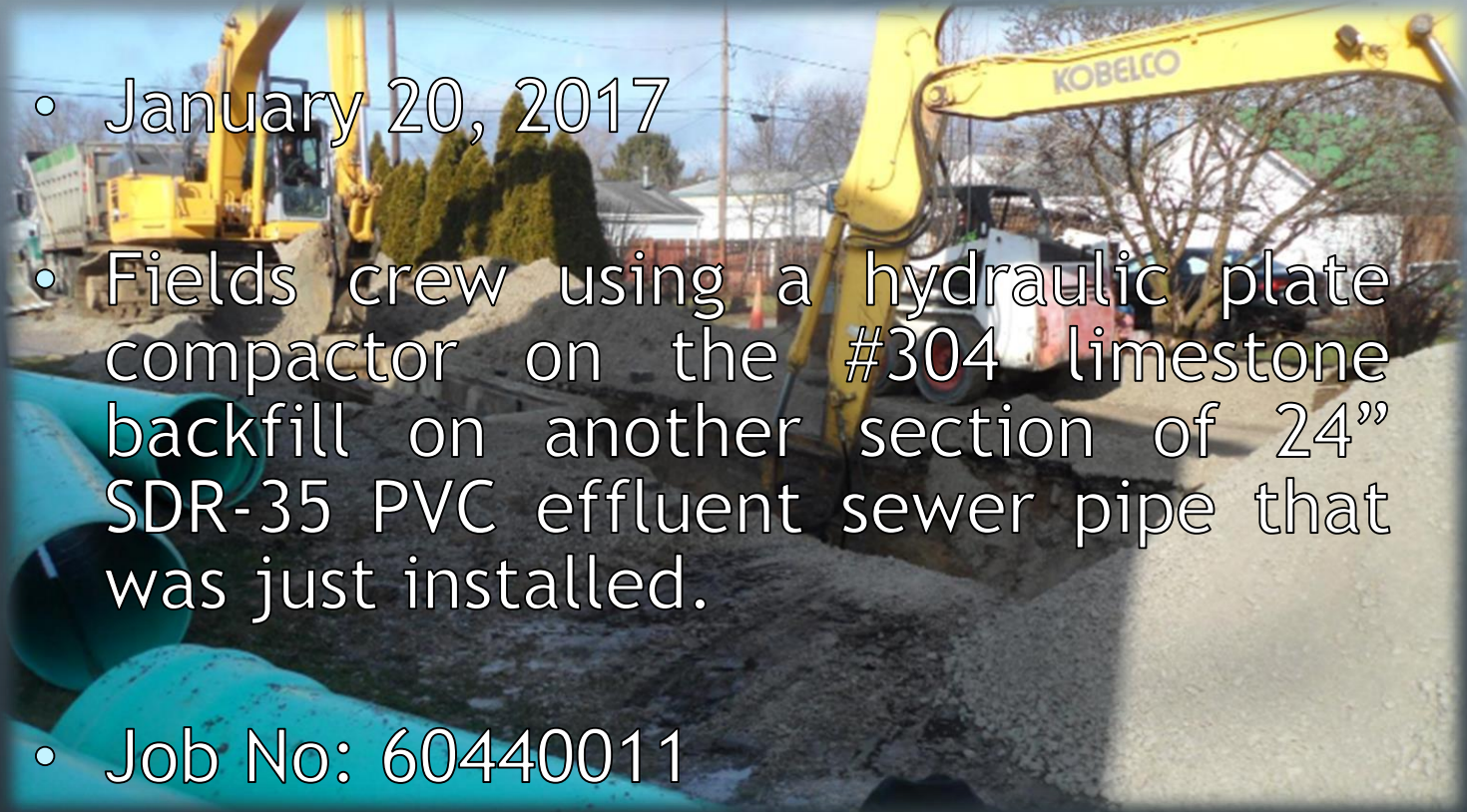
- January 20, 2017
- Fields crew getting ready to install another section of 14 foot 24" SDR-35 PVC effluent sewer pipe.
- Job No: 60440011



Ashville's WRRF Project



Construction in Photos



- January 20, 2017
- Fields crew using a hydraulic plate compactor on the #304 limestone backfill on another section of 24" SDR-35 PVC effluent sewer pipe that was just installed.
- Job No: 60440011

Ashville's WRRF Project



Construction in Photos



- January 24, 2017
- Fields crew #1 installing the 24" SDR-35 PVC effluent sewer pipe, #57 bedding and #304 compacted granular backfill going West on Rich St. This is the location where the unmarked 7.5 inch clay tile drain line was found and repaired.
- Job No: 60440011

Ashville's WRRF Project



Construction in Photos



- January 24, 2017
- Fields crew #1 continuing to install the 24" SDR-35 PVC effluent sewer pipe, #57 bedding and #304 compacted granular backfill going West on Rich St.
- Job No: 60440011

Ashville's WRRF Project



Construction in Photos



- January 24, 2017
- Fields crew #2 starting the excavation of MH#18 at the WRRF plant site.
- Job No: 60440011

Ashville's WRRF Project



Construction in Photos

- January 25, 2017
- Crew #1 installing another 14 foot section of 24" SDR-35 PVC effluent sewer pipe at the intersection of Rich St. & Jefferson Ave.
- Job No: 60440011



Ashville's WRRF Project



Construction in Photos



- January 24, 2017
- Fields crew #2 excavating to start installing the 24" SDR-35 PVC sewer pipe from MH#18 to MH#19 at the WRRF Plant site.
- Job No: 60440011

Ashville's WRRF Project



Construction in Photos

- January 24, 2017
- Looking East towards MH#18 the Trench Boxes have been installed and Fields Crew #2 can now start installing the 24" SDR-35 sewer pipe.
- Job No: 60440011

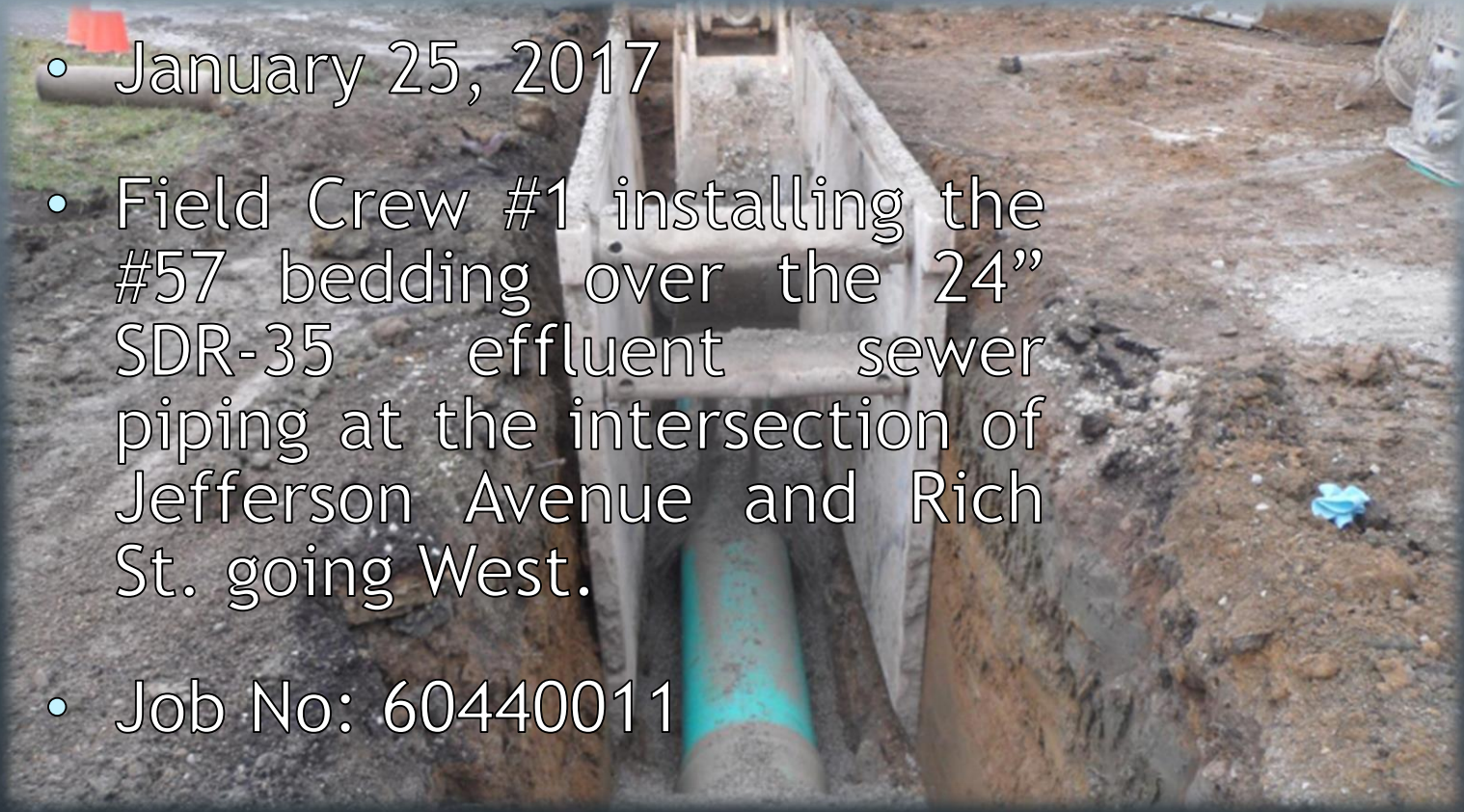


Ashville's WRRF Project



Construction in Photos

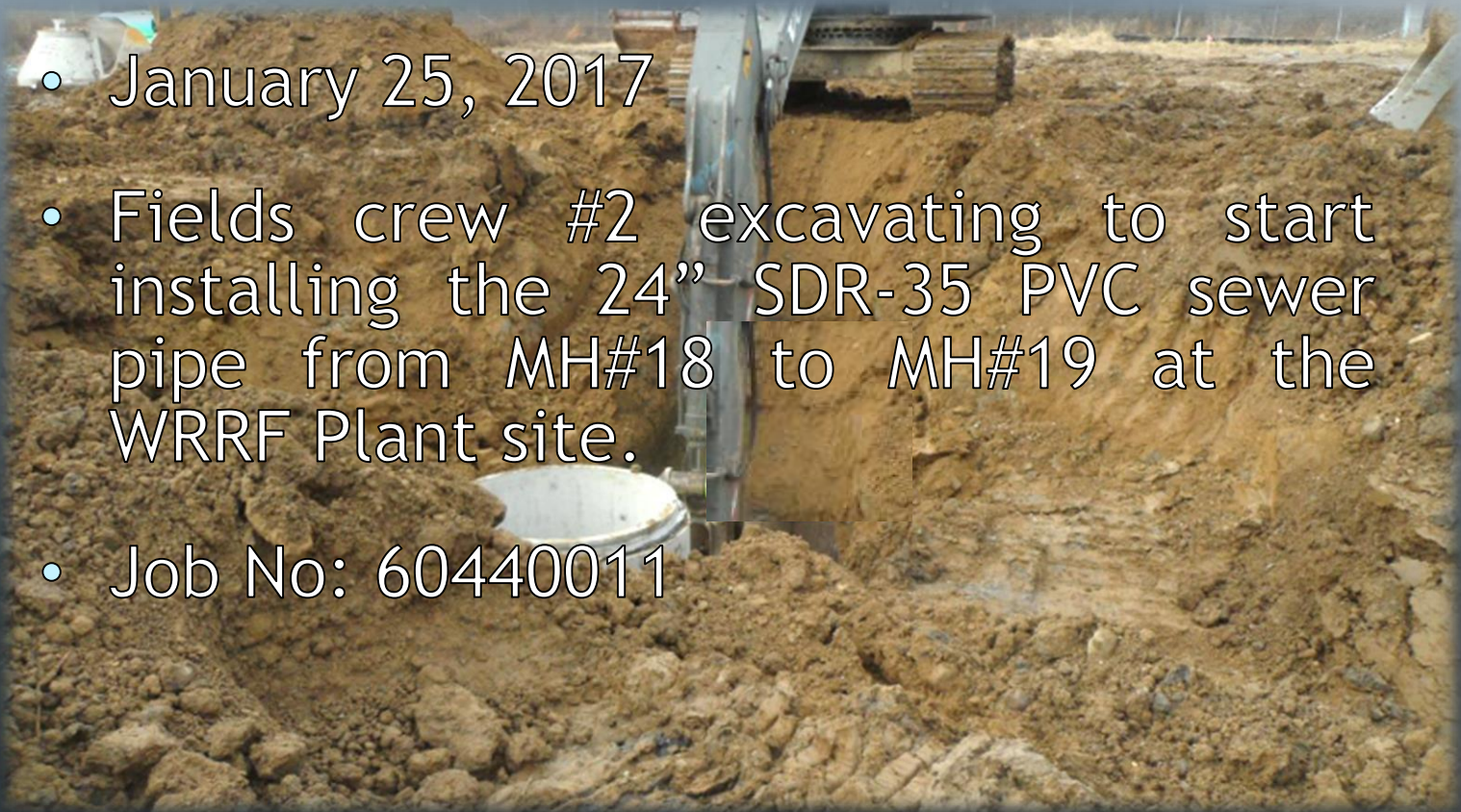
- January 25, 2017
- Field Crew #1 installing the #57 bedding over the 24" SDR-35 effluent sewer piping at the intersection of Jefferson Avenue and Rich St. going West.
- Job No: 60440011



Ashville's WRRF Project



Construction in Photos

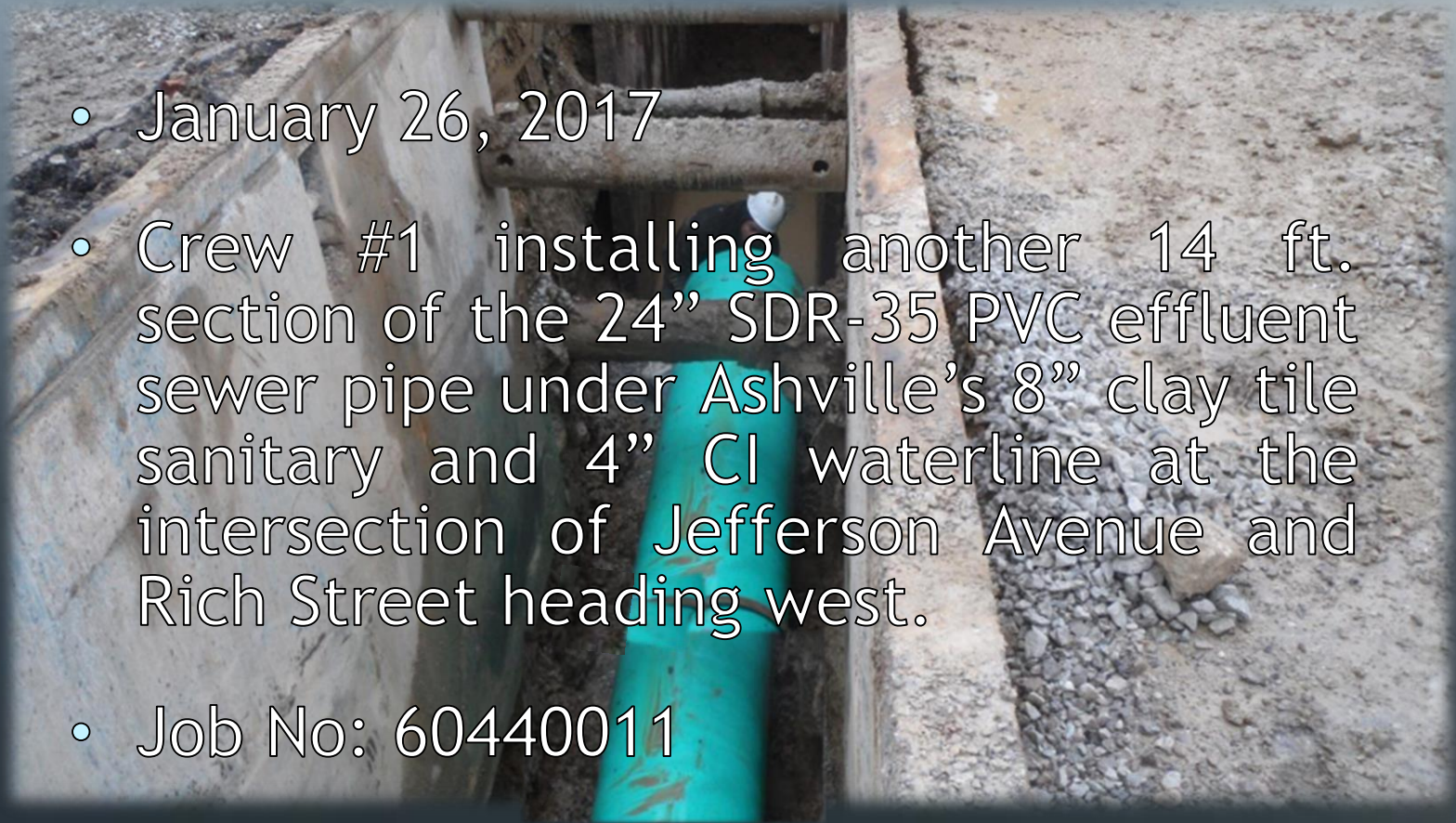


- January 25, 2017
- Fields crew #2 excavating to start installing the 24" SDR-35 PVC sewer pipe from MH#18 to MH#19 at the WRRF Plant site.
- Job No: 60440011

Ashville's WRRF Project



Construction in Photos



- January 26, 2017
- Crew #1 installing another 14 ft. section of the 24" SDR-35 PVC effluent sewer pipe under Ashville's 8" clay tile sanitary and 4" CI waterline at the intersection of Jefferson Avenue and Rich Street heading west.
- Job No: 60440011

Ashville's WRRF Project



Construction in Photos

- January 26, 2017
- Crew #1 has finished repairing the 6" clay tile storm drain and ready to repair the 8" PVC storm drain at the intersection of Jefferson Ave. and Rich St.
- Job No: 60440011



Ashville's WRRF Project



Construction in Photos

- January 26, 2017
- Crew #1 has installed the base section of MH#9 at the intersection of Jefferson Ave. and Rich St. looking West.
- Job No: 60440011



Ashville's WRRF Project



Construction in Photos



- January 26, 2017
- Crew #2 excavating to install another section of 24" SDR-35 sewer pipe from MH#18 to MH#19 at the Ashville WRRF plant site.
- Job No: 60440011

Ashville's WRRF Project



Construction in Photos

- January 26, 2017
- Crew #2 are installing another 14 ft. section of 24" SDR-35 PVC sewer pipe from MH#18 to MH#19 at the Ashville WRRF plant site.
- Job No: 60440011



Ashville's WRRF Project



Construction in Photos

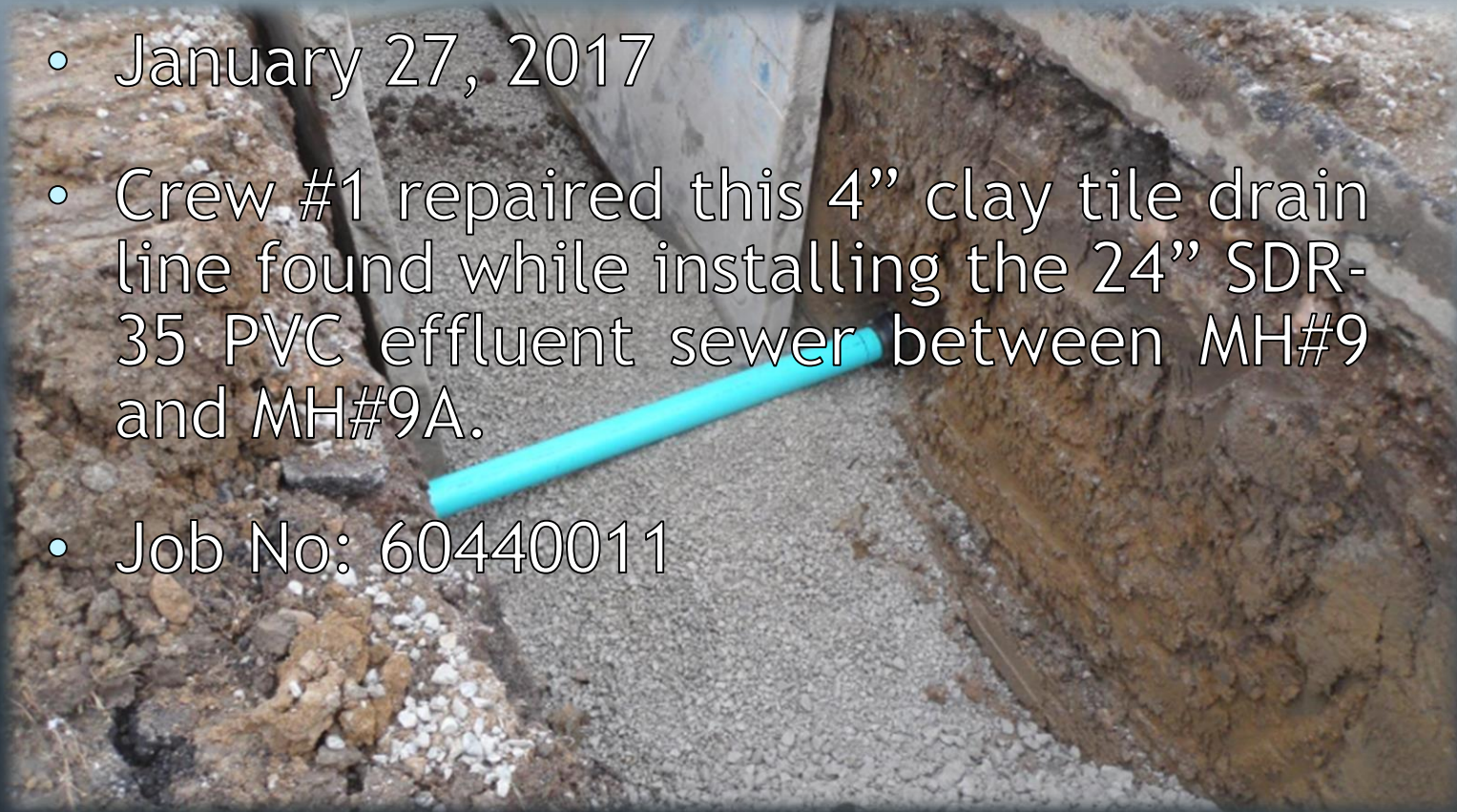


- January 27, 2017
- Crew #1 installing more 24" SDR-35 PVC effluent sewer pipe from MH#9 to MH#9A going West on Rich St.
- Job No: 60440011

Ashville's WRRF Project



Construction in Photos

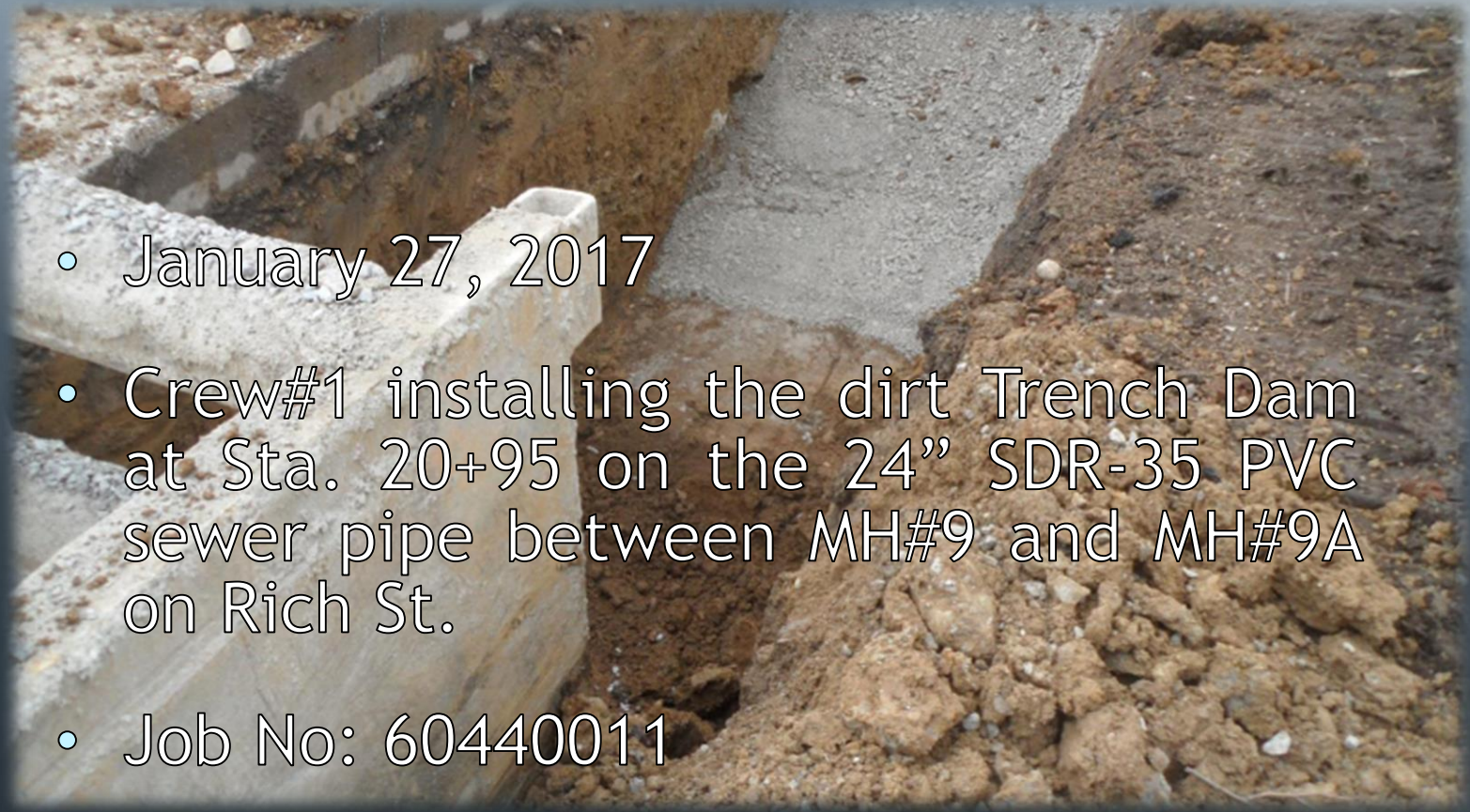


- January 27, 2017
- Crew #1 repaired this 4" clay tile drain line found while installing the 24" SDR-35 PVC effluent sewer between MH#9 and MH#9A.
- Job No: 60440011

Ashville's WRRF Project



Construction in Photos



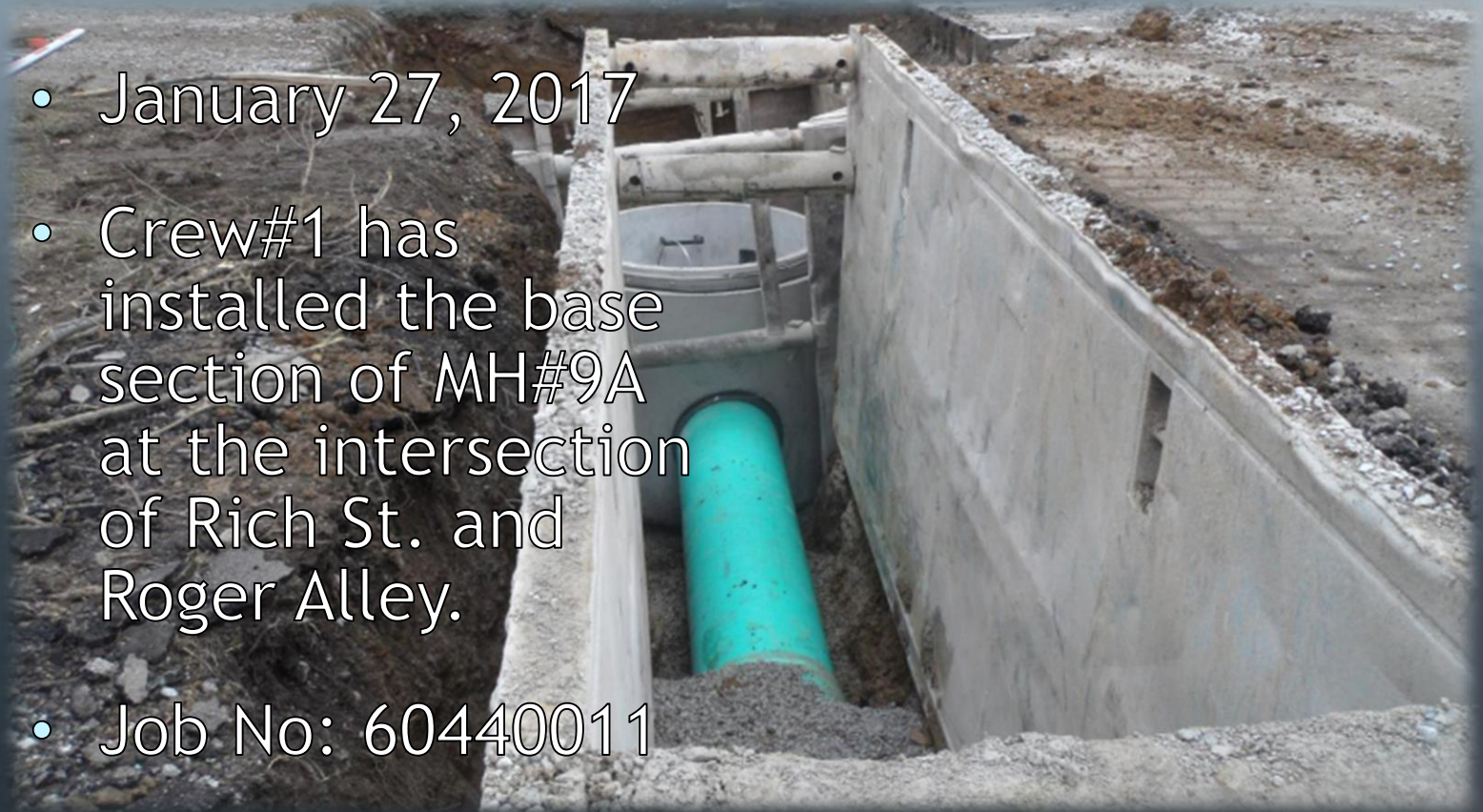
- January 27, 2017
- Crew#1 installing the dirt Trench Dam at Sta. 20+95 on the 24" SDR-35 PVC sewer pipe between MH#9 and MH#9A on Rich St.
- Job No: 60440011

Ashville's WRRF Project



Construction in Photos

- January 27, 2017
- Crew#1 has installed the base section of MH#9A at the intersection of Rich St. and Roger Alley.
- Job No: 60440011

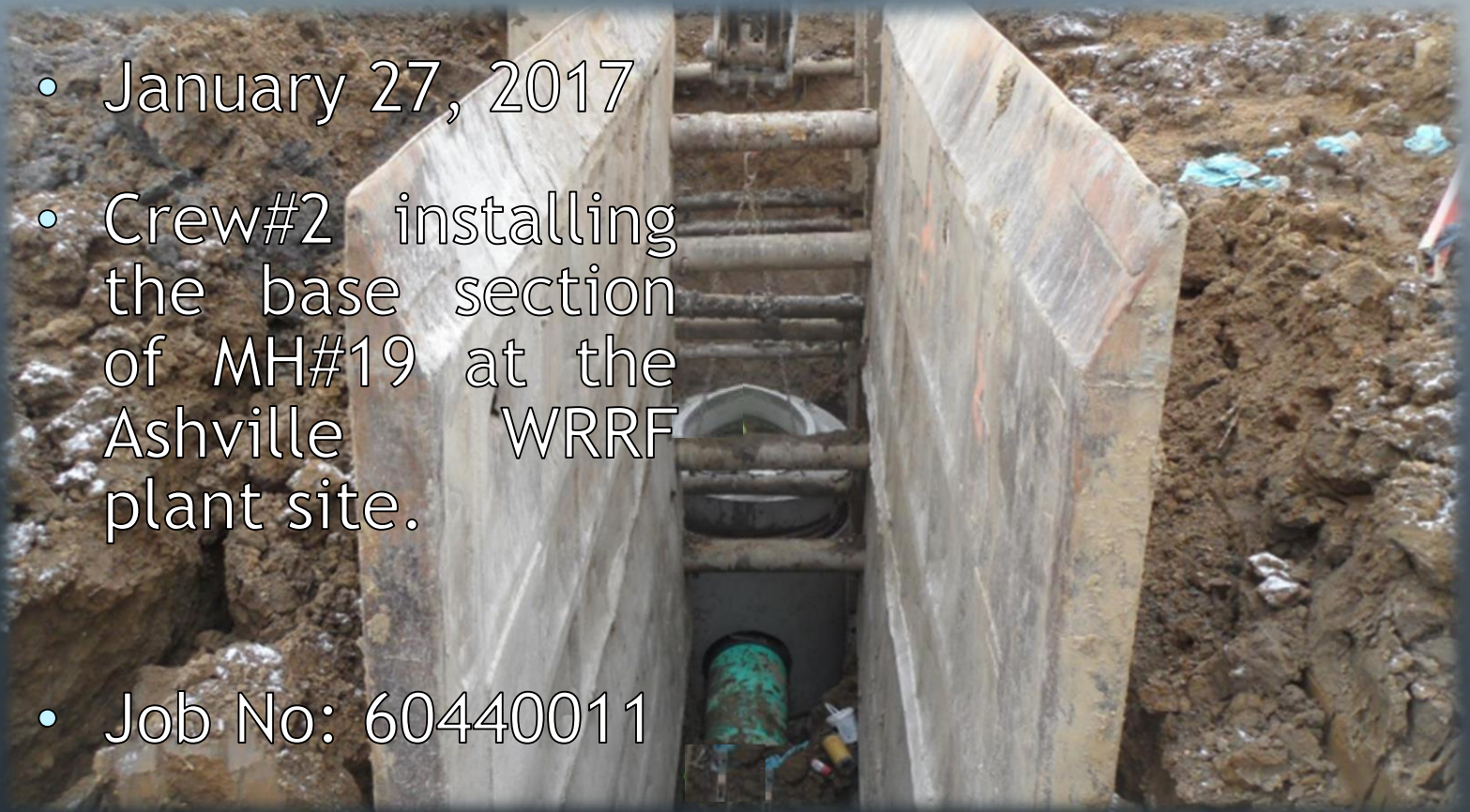


Ashville's WRRF Project



Construction in Photos

- January 27, 2017
- Crew#2 installing the base section of MH#19 at the Ashville WRRF plant site.
- Job No: 60440011



Ashville's WRRF Project



Construction in Photos

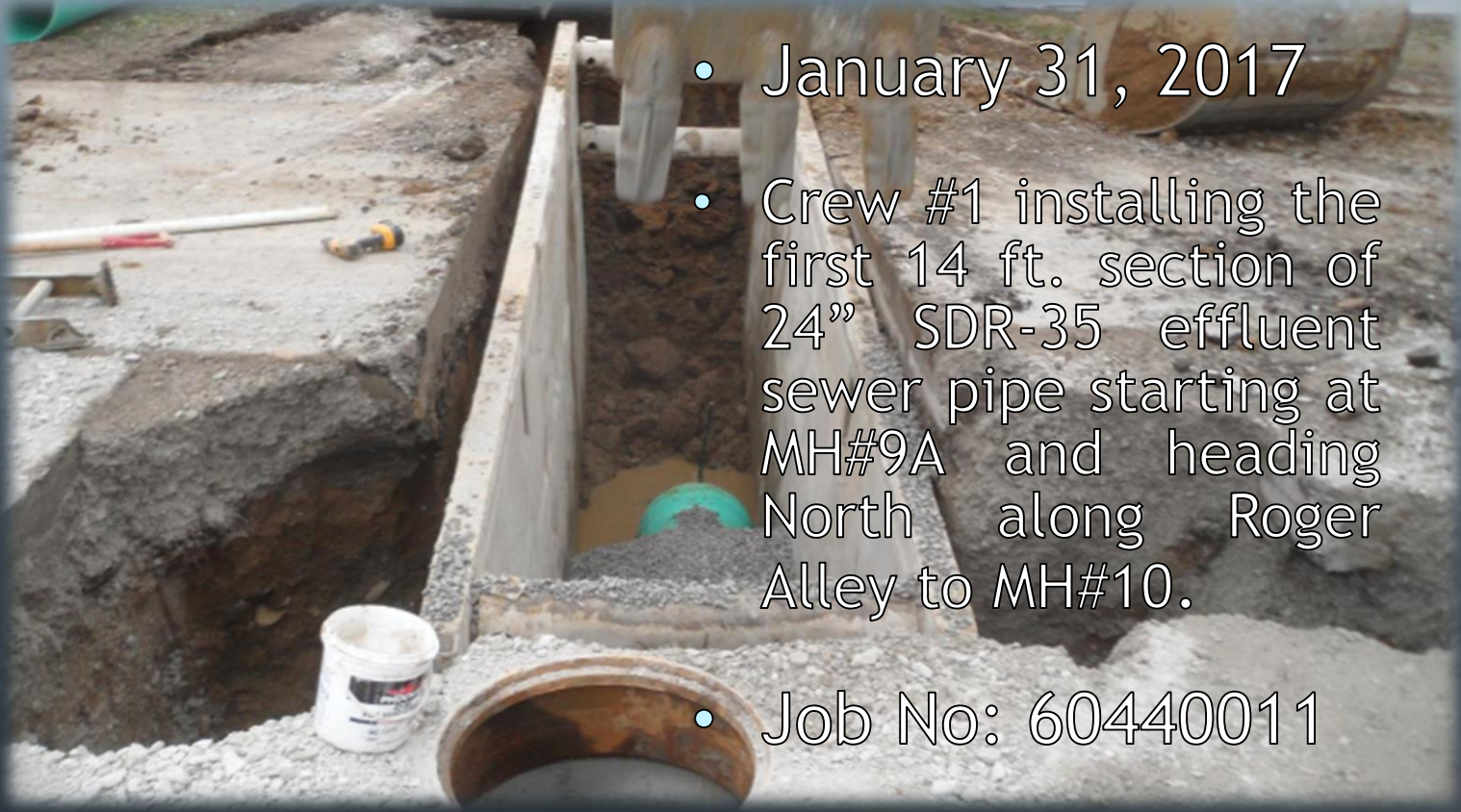
- January 27, 2017
- Crew#2 installing one 14 ft. section of 8" SDR-35 PVC sewer pipe at MH#19 this 8" sewer is for future use.
- Job No: 60440011



Ashville's WRRF Project



Construction in Photos



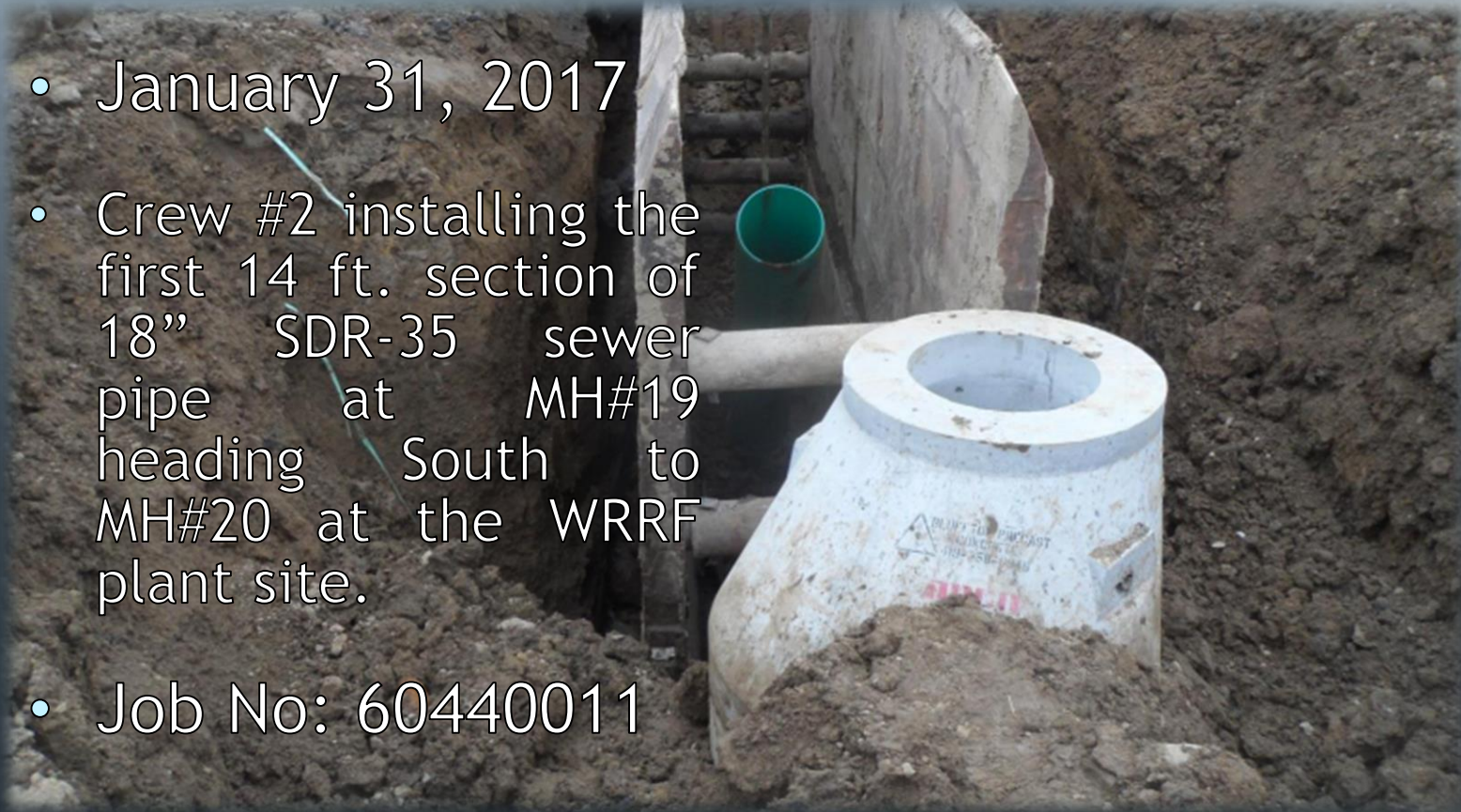
- January 31, 2017
- Crew #1 installing the first 14 ft. section of 24" SDR-35 effluent sewer pipe starting at MH#9A and heading North along Roger Alley to MH#10.
- Job No: 60440011

Ashville's WRRF Project



Construction in Photos

- January 31, 2017
- Crew #2 installing the first 14 ft. section of 18" SDR-35 sewer pipe at MH#19 heading South to MH#20 at the WRRF plant site.
- Job No: 60440011



Ashville's WRRF Project



Construction in Photos

- January 31, 2017
- Crew #1 continuing to install the 24" SDR-35 effluent sewer pipe from MH#9A to MH#10 North along Roger Alley.
- Job No: 60440011

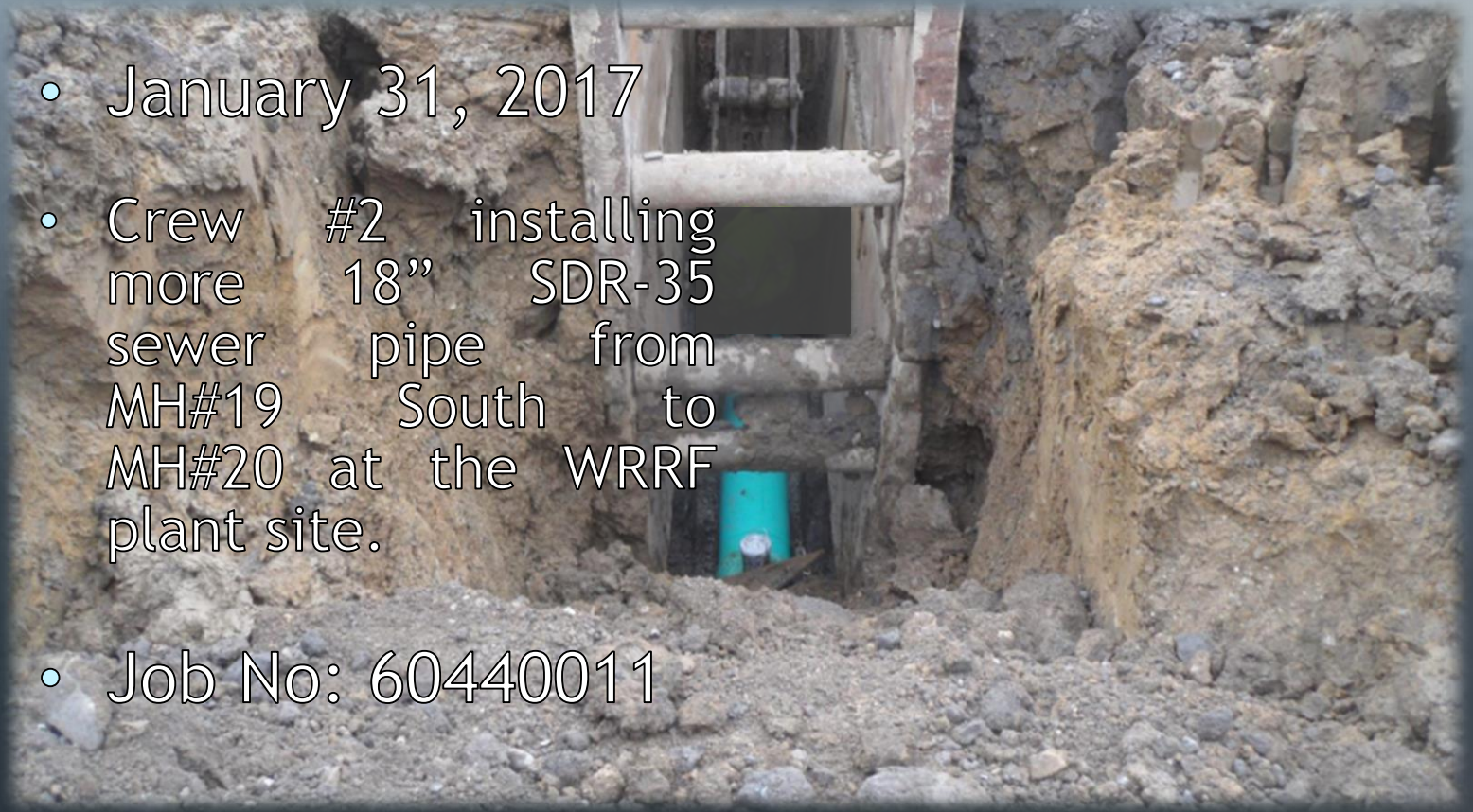


Ashville's WRRF Project



Construction in Photos

- January 31, 2017
- Crew #2 installing more 18" SDR-35 sewer pipe from MH#19 South to MH#20 at the WRRF plant site.
- Job No: 60440011



Ashville's WRRF Project



Construction in Photos



- January 31, 2017
- Crew #1 continuing to install the 24" SDR-35 effluent sewer pipe from MH#9A to MH#10 going North on Roger Alley.
- Job No: 60440011



THANK YOU

ASHVILLE
Vision Statement