

Construction in Photos

Overview Decommissioning of WWTP 2017

Water Resource Recovery Department

Village of Ashville

Ashville's Water Resource Recovery Facility

Part A - Job No: 60440011

Presentation Available on Line at:

www.ashvilleohio.gov



Ashville's WRRF Project



Vision Statement

Remembering our rural heritage, Ashville will be a vibrant and friendly community, offering an enhanced quality of life achieved through planning, progress and collaboration.

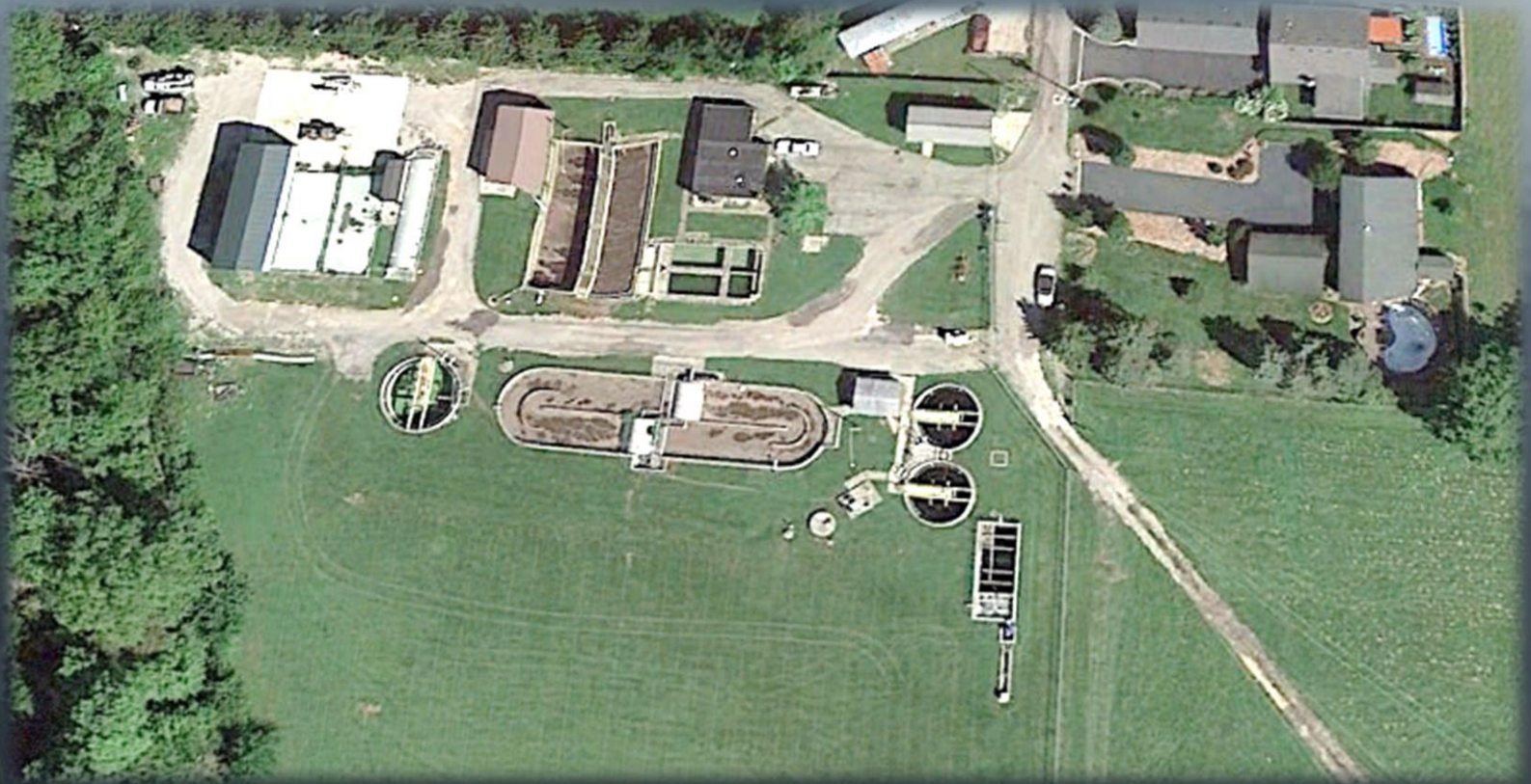
It will be a welcoming place where people want to live and businesses prosper.

Ashville's WRRF Project



Construction Aerial Photo

From Before 2015

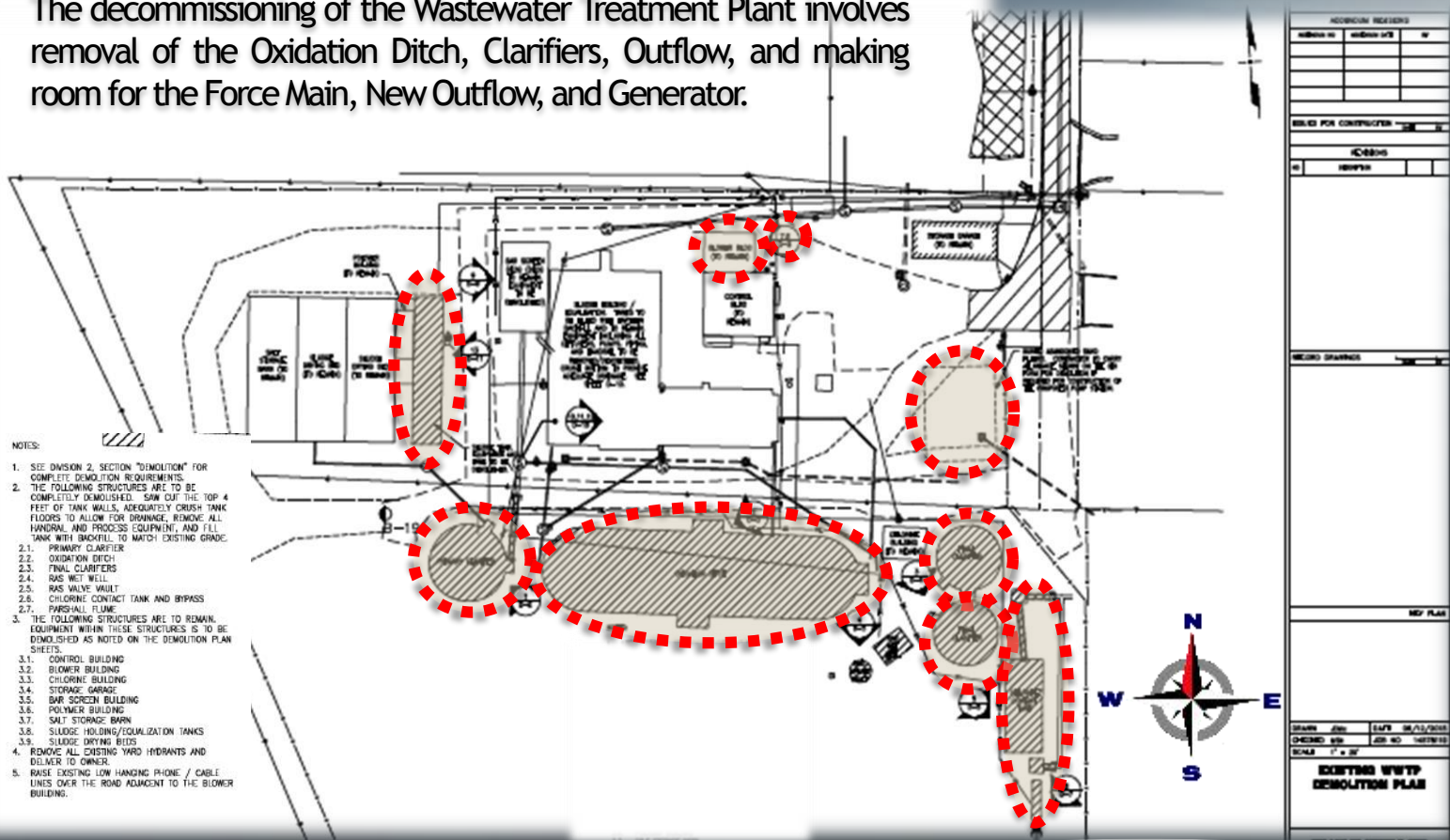


Ashville's WRRF Project



Construction in Photos

The decommissioning of the Wastewater Treatment Plant involves removal of the Oxidation Ditch, Clarifiers, Outflow, and making room for the Force Main, New Outflow, and Generator.



Ashville's WRRF Project



Construction in Photos

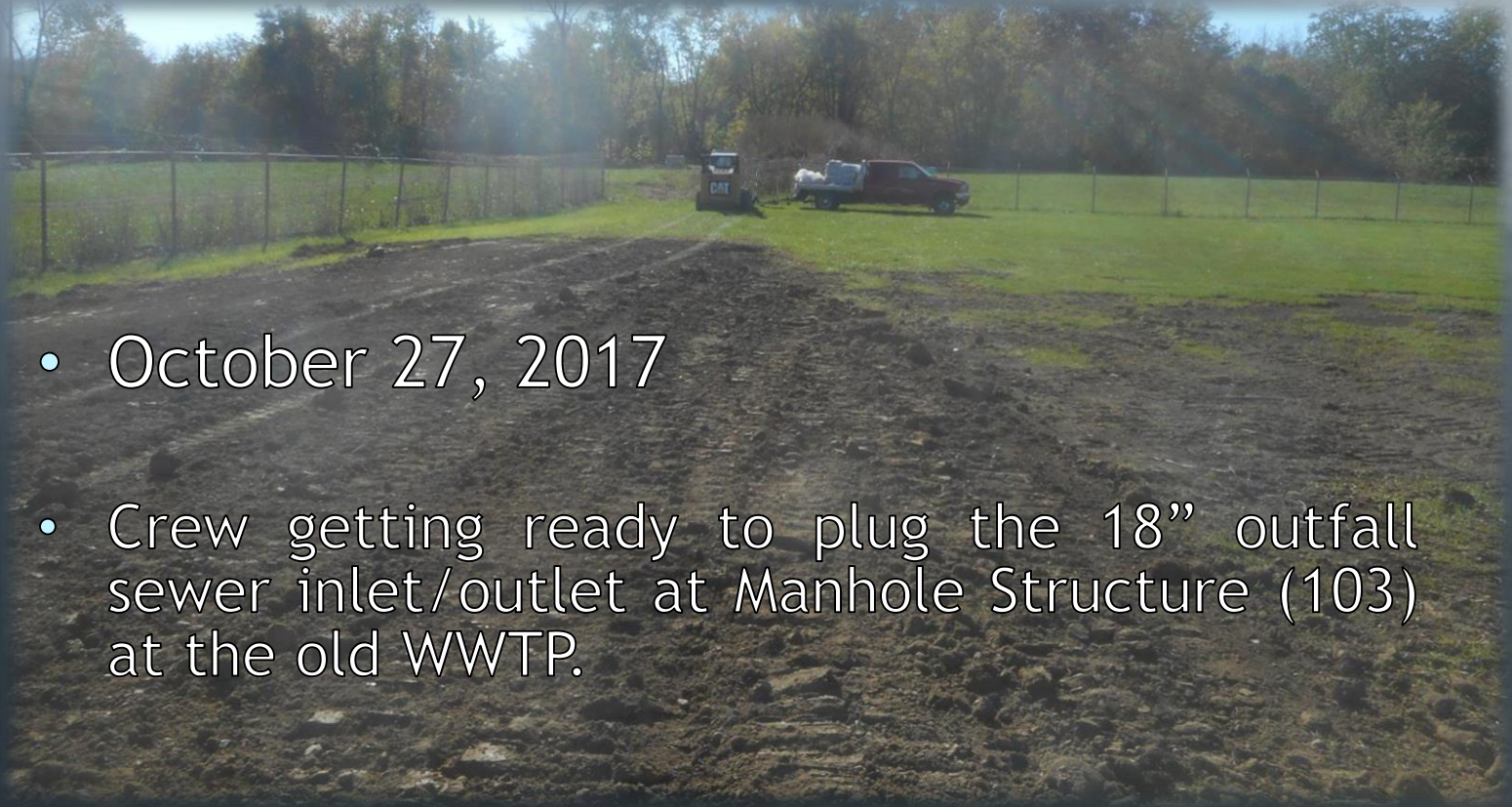


- October 30, 2017
- Crew working on the wiring for the Emergency Generator at the old WWTP.

Ashville's WRRF Project



Construction in Photos



- October 27, 2017
- Crew getting ready to plug the 18" outfall sewer inlet/outlet at Manhole Structure (103) at the old WWTP.

Ashville's WRRF Project



Construction in Photos



- October 27, 2017
- Crew has completed the demolition and backfilling of the Oxidation Ditch, Clarifiers, RAS Pump Station, RAS valve vault and the Primary Clarifier at the old WWTP.

Ashville's WRRF Project



Construction in Photos



- October 26, 2017
- Crew backfilling the Oxidation Ditch at the old WWTP.

Ashville's WRRF Project



Construction in Photos



- October 25, 2017
- Crew working on backfilling the Oxidation Ditch at the old WWTP.

Ashville's WRRF Project



Construction in Photos



- October 25, 2017
- Crew continuing to haul in dirt and backfill the Oxidation Ditch at the old WWTP.

Ashville's WRRF Project



Construction in Photos



- October 20, 2017
- Crew completed cleaning the grit/debris from the Oxidation Ditch at the old WWTP.

Ashville's WRRF Project



Construction in Photos

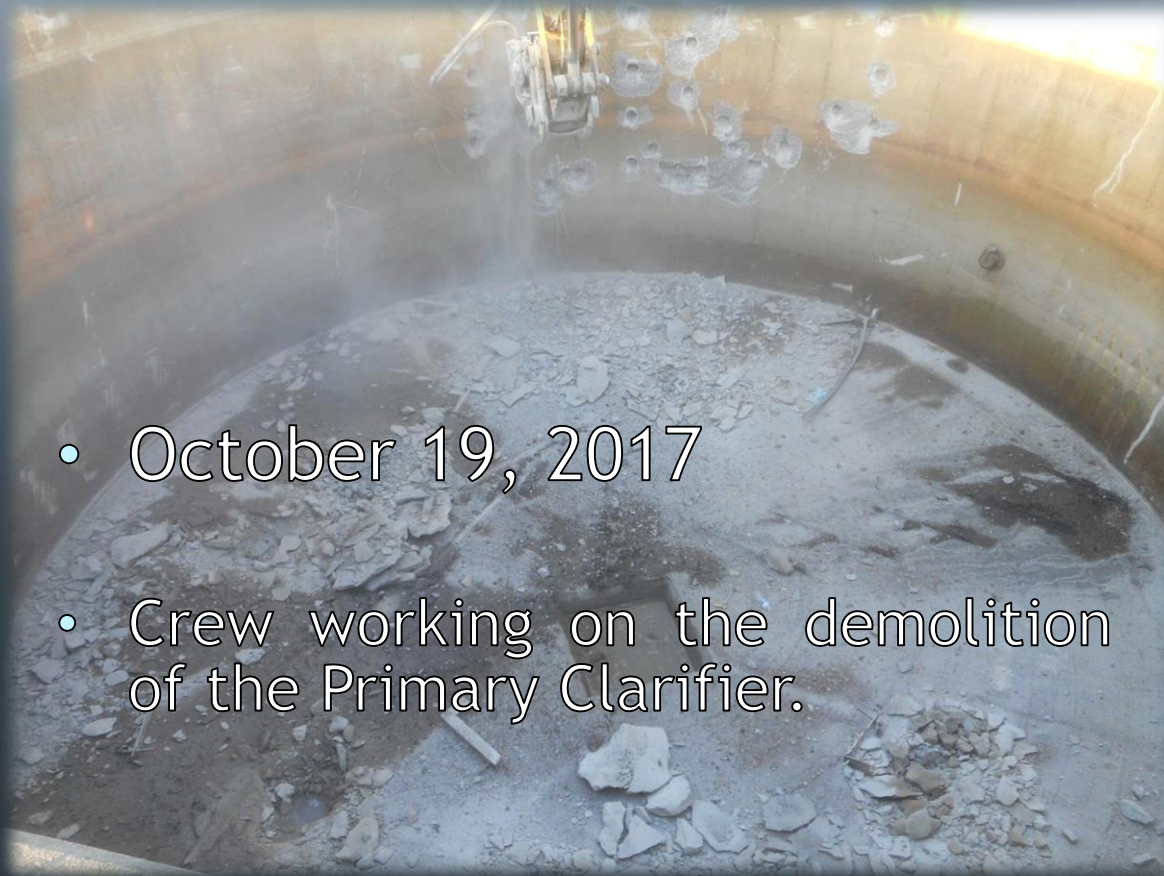


- October 19, 2017
- Crew working on the demolition of the Primary Clarifier at the old WWTP.

Ashville's WRRF Project



Construction in Photos



- October 19, 2017
- Crew working on the demolition of the Primary Clarifier.

Ashville's WRRF Project



Construction in Photos

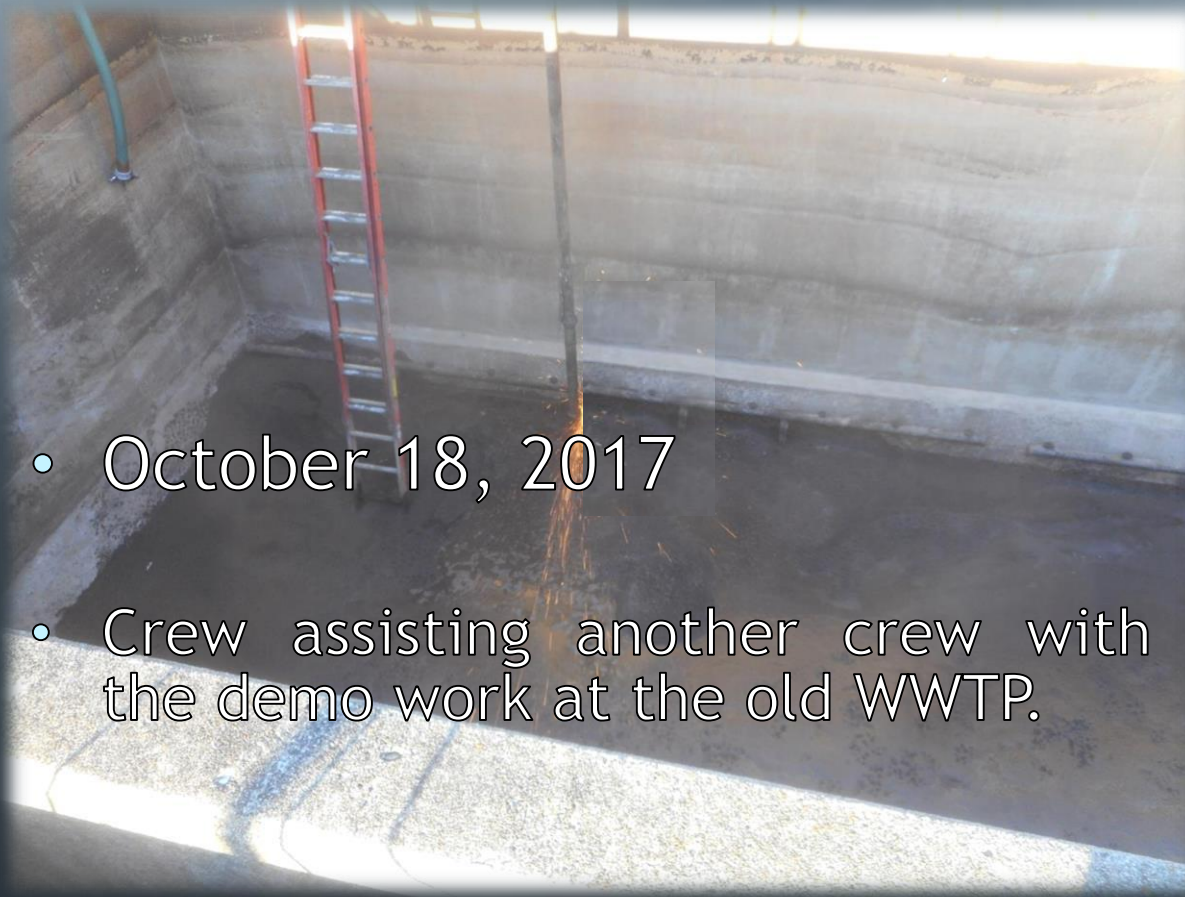


- October 19, 2017
- Crew continuing to clean the grit/debris from the Oxidation Ditch at the old WWTP.

Ashville's WRRF Project



Construction in Photos



- October 18, 2017
- Crew assisting another crew with the demo work at the old WWTP.

Ashville's WRRF Project



Construction in Photos



- October 18, 2017
- Crew using a vacuum truck to remove the grit/debris from the Oxidation Ditch at the old WWTP.

Ashville's WRRF Project



Construction in Photos



- October 18, 2017
- Crew backfilling the Clarifiers, Post Air Tank and Parshall Flume at the old WWTP.

Ashville's WRRF Project



Construction in Photos



- October 18, 2017
- Crew starting to demo the RAS valve vault at the old WWTP.

Ashville's WRRF Project



Construction in Photos



- October 17, 2017
- Crew installing a new transformer and lighting panel in the control building of the old WWTP.

Ashville's WRRF Project



Construction in Photos

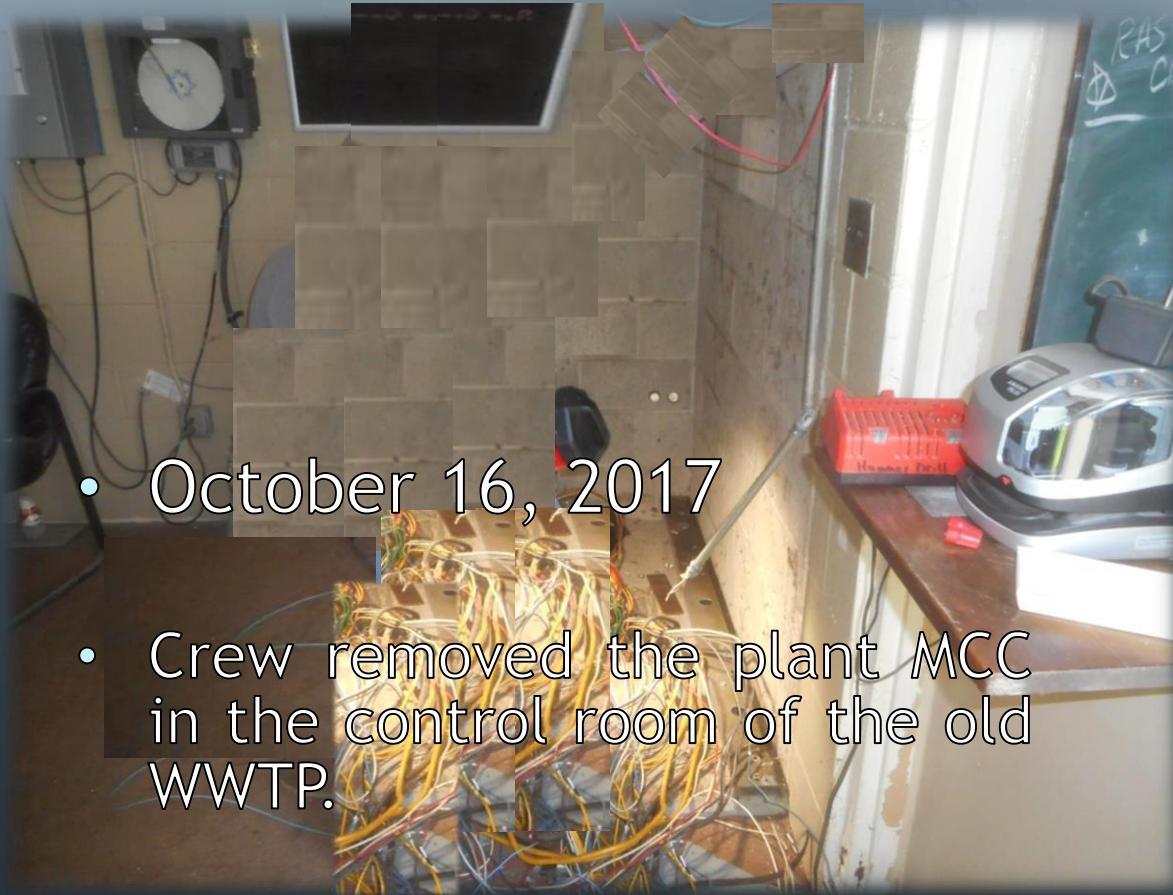


- October 17, 2017
- Crew continuing to demo the Clarifiers at the old WWTP.

Ashville's WRRF Project



Construction in Photos



- October 16, 2017
- Crew removed the plant MCC in the control room of the old WWTP.

Ashville's WRRF Project



Construction in Photos

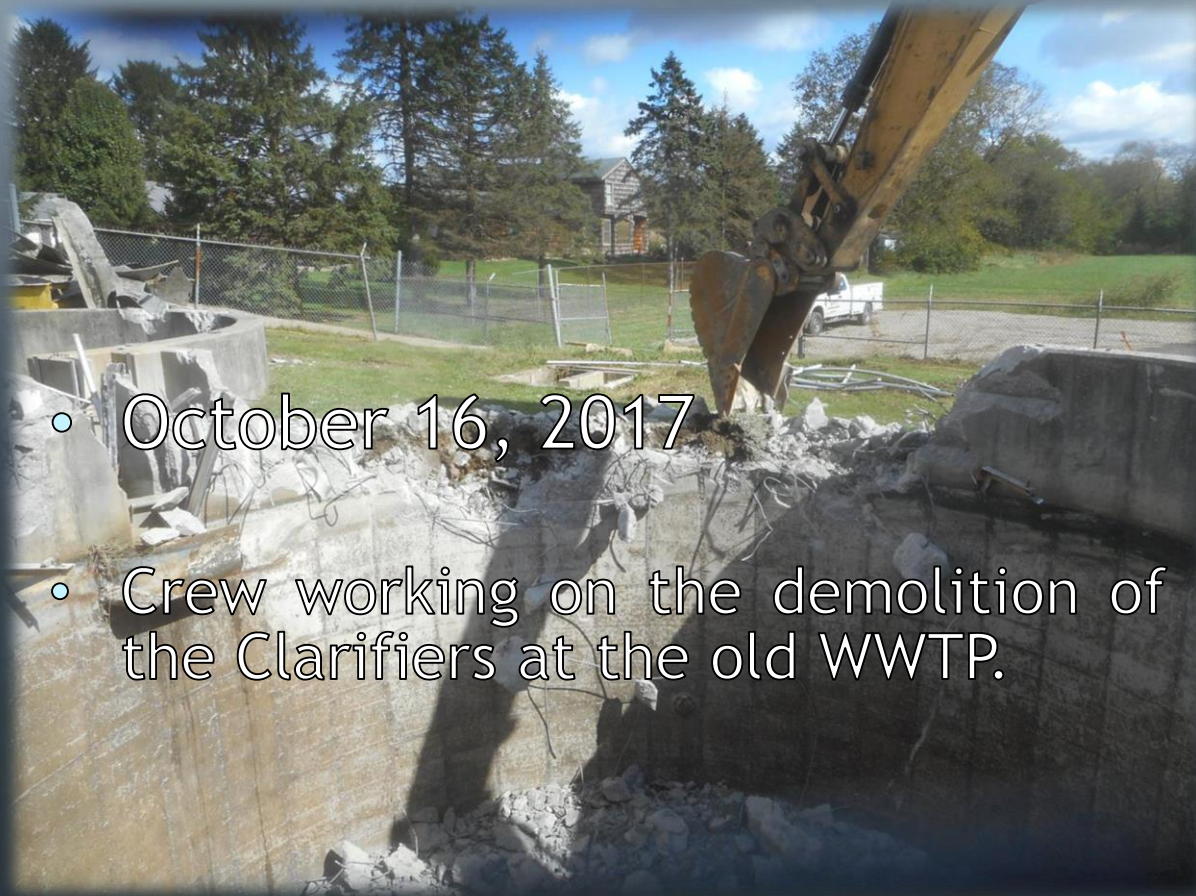


- October 16, 2017
- Crew starting the demolition of the Clarifiers at the old WWTP.

Ashville's WRRF Project



Construction in Photos



- October 16, 2017
- Crew working on the demolition of the Clarifiers at the old WWTP.

Ashville's WRRF Project



Construction in Photos



- October 16, 2017
- Crew removing the Blowers at the old WWTP as part of the plant demolition.

Ashville's WRRF Project



Construction in Photos



- September 25, 2017
- Crew installing the Automatic Transfer Switch for the new pump station at the old WWTP.

Ashville's WRRF Project



Construction in Photos



- August 29, 2017
- Crew installing the electrical panels for the new influent pump station at the old WWTP.

Ashville's WRRF Project



Construction in Photos



- August 28, 2017
- Crew wiring the control panel for the new grinder pump station at the old WWTP.

Ashville's WRRF Project



Construction in Photos



- August 16, 2017
- Crew painting the wetwell of the new pump station at the old WWTP.

Ashville's WRRF Project



Construction in Photos



- August 10, 2017
- Crew set the control panel and the FRP building on the foundation slab of the new pump station at the old WWTP.

Ashville's WRRF Project



Construction in Photos



- August 9, 2017
- Crew pouring 3 yards 4500 psi w/air concrete for the foundation slab of the new pump station at the old WWTP.

Ashville's WRRF Project



Construction in Photos



• August 8, 2017

- Crew removing the inner concrete forms as Amelcon Electric installs some of the underground electrical conduit for the new pump station at the old WWTP.

Ashville's WRRF Project



Construction in Photos



- August 7, 2017
- Crew getting ready to pour 5 yards of 4500 psi w/air concrete for the foundation footers of the new pump station at the old WWTP.

Ashville's Water Resource Recover Facility Project Planning Timeline 2015 - 2017



3½ Year or 42 Months

WRRF Plan Implementation

- a. 9 months submit detailed design plan (s) and a complete and approvable Permit to Install (PTI) application for the new WWTP, an application for an NPDES permit, and an anti-degradation addendum
 - Correct any deficiencies within 30 days of notification by letter from Ohio EPA
- b. 16 months commence construction of the new WWTP in accordance with the approved PTI
 - Within 7 days of commencing construction notify the CDO
- c. 40 months of the effective date of these Orders, Respondent shall complete construction of the new WWTP in accordance with the approved PTI;
 - Within 7 days of completing construction notify the CDO
- b. 60 days of completion of construction of the new WWTP, the WWTP shall attain operational level and shall meet the final effluent limitations in Respondent's NPDES permit;
 - Within 7 days of attain operational level and meet final effluent limitations notify the CDO

Timeline Begins June 16, 2014

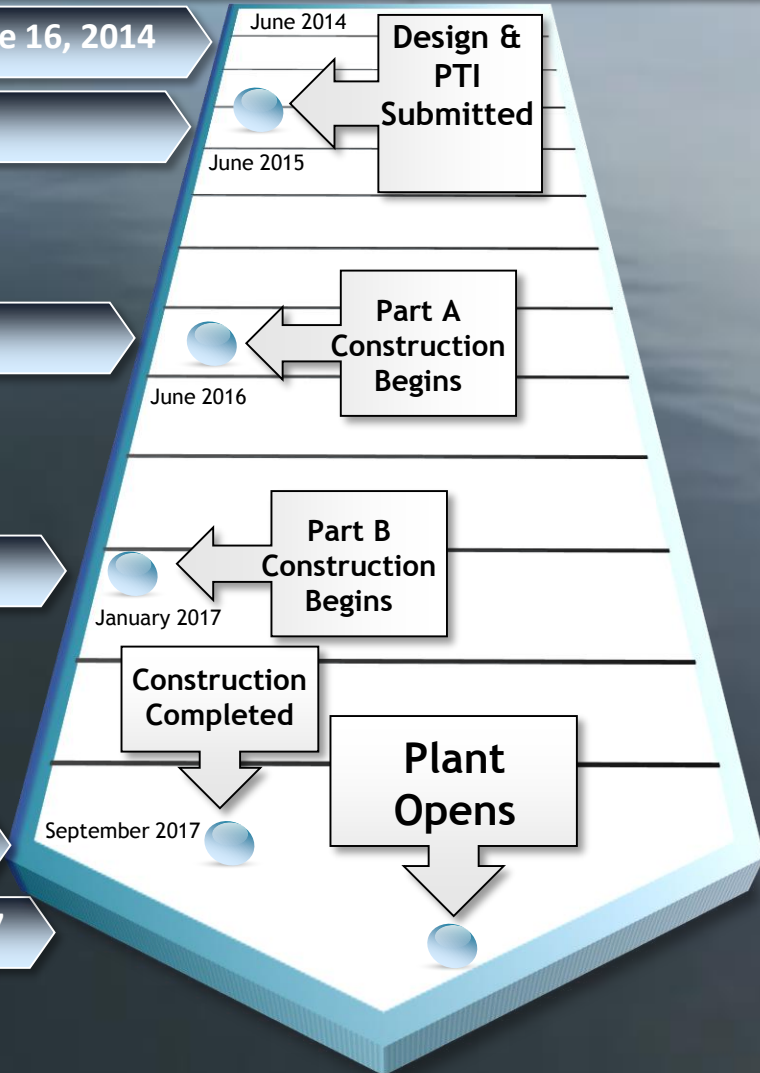
March 4, 2015

March 21, 2016

January 2, 2017

September 16, 2017

November 15, 2017





**THANK YOU
AECOM, FIELDS, AND PETERSON**

ASHVILLE
Vision Statement