

# Construction in Photos

East Clarifier from April 1, 2017

Water Resource Recovery Department

Village of Ashville

Ashville's Water Resource Recovery Facility

Part A - Job No: 60440011

Presentation Available on Line at:

[www.ashvilleohio.gov](http://www.ashvilleohio.gov)



## Ashville's WRRF Project



### Vision Statement

Remembering our rural heritage, Ashville will be a vibrant and friendly community, offering an enhanced quality of life achieved through planning, progress and collaboration.

It will be a welcoming place where people want to live and businesses prosper.

# Ashville's WRRF Project



## Construction Aerial Photo

From November 2016, April, May & November 2017

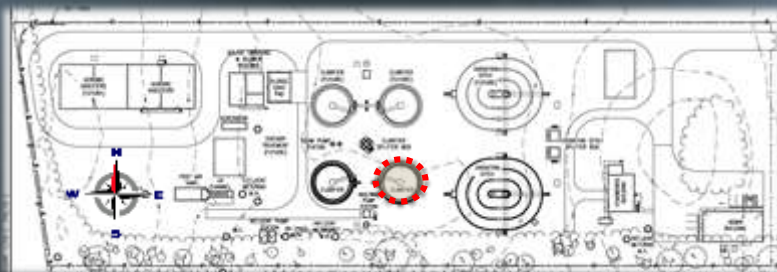


# Ashville's WRRF Project



## Construction in Photos

Two Clarifiers are after the Oxidation Ditch. A clarifier is generally used to remove solid particulates or suspended solids from liquid for clarification and (or) thickening. Concentrated impurities, discharged from the bottom of the tank are known as sludge, while the particles that float to the surface of the liquid are called scum.



East Clarifier

## Ashville's WRRF Project



### Construction in Photos

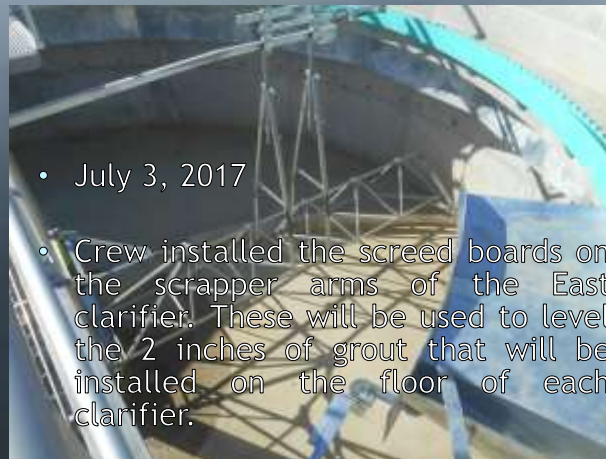


- July 11, 2017
- Crew installing the Brass scraper blades on the scraper arms of the East Clarifier.

## Ashville's WRRF Project



### Construction in Photos



- July 3, 2017
- Crew installed the screed boards on the scrapper arms of the East clarifier. These will be used to level the 2 inches of grout that will be installed on the floor of each clarifier.

## Ashville's WRRF Project



### Construction in Photos

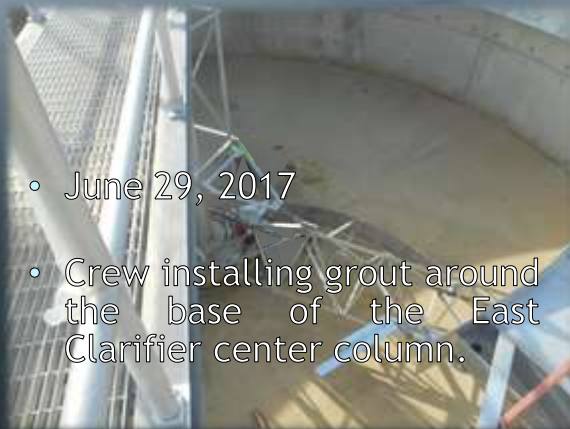


- June 30, 2017
- Crew making some final adjustments to the East Clarifier scrapper arms.

## Ashville's WRRF Project



### Construction in Photos



- June 29, 2017
- Crew installing grout around the base of the East Clarifier center column.

## Ashville's WRRF Project



### Construction in Photos



- June 2, 2017
- Crew installing the motorized actuator on the Scum Box weir gate of the East Clarifier.

## Ashville's WRRF Project



### Construction in Photos



- May 31, 2017
- Crew installing the conduit and motor disconnect for the Drive Assembly of the East Clarifier.

## Ashville's WRRF Project



### Construction in Photos



- May 30, 2017
- Crew installing the 12" x 22" Downward Opening Weir Gate in the Scum Box of the East Clarifier.

## Ashville's WRRF Project



### Construction in Photos



- May 22, 2017
- Crew installing the Scum Baffle in the East Clarifier.

## Ashville's WRRF Project



### Construction in Photos



- May 18, 2017
- Crew chipping away excess concrete from the Influent/Effluent troughs of the East Clarifier.

## Ashville's WRRF Project



### Construction in Photos



- May 16, 2017
- Crew installing the scum box assembly for the East Clarifier.

## Ashville's WRRF Project



### Construction in Photos



- May 11, 2017
- Crew has installed the Clarifier Skimmer Assembly and working on the V-notch Weir for the East Clarifier.

## Ashville's WRRF Project



### Construction in Photos



- May 10, 2017
- Crew installing the spiral scrapper blades on the scrapper arms of the East Clarifier.



## Ashville's WRRF Project



### Construction in Photos



- May 9, 2017
- Crew installing the Scrapper Arms for the East Clarifier.

## Ashville's WRRF Project



### Construction in Photos



- May 5, 2017
- Crew stripping the shoring and decking from the Influent/Effluent troughs of the East Clarifier.

## Ashville's WRRF Project



### Construction in Photos



- April 28, 2017
- Crew installing the concrete forms for the walls of the influent/effluent troughs of the East Clarifier.

## Ashville's WRRF Project



### Construction in Photos

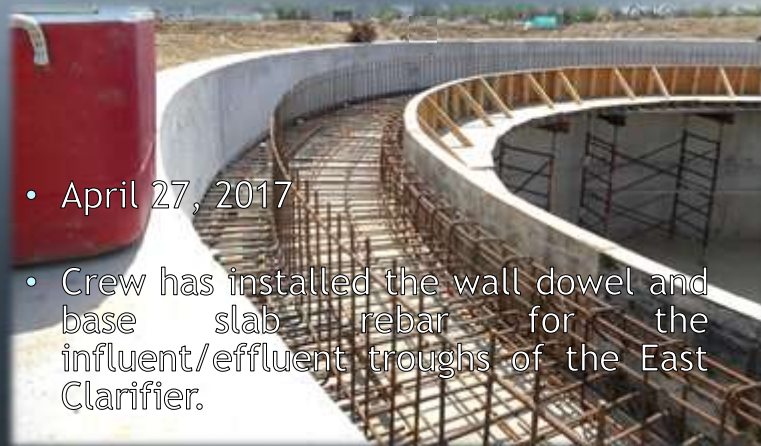


- April 27, 2017
- Crew pouring 27 yards of 4500 psi w/air concrete for the base slab of the influent/effluent troughs of the East Clarifier.

## Ashville's WRRF Project



### Construction in Photos



- April 27, 2017
- Crew has installed the wall dowel and base slab rebar for the influent/effluent troughs of the East Clarifier.

## Ashville's WRRF Project



### Construction in Photos



- April 26, 2017
- Crew installed the drive cage and drive assembly in the East Clarifier.

## Ashville's WRRF Project



### Construction in Photos



- April 25, 2017
- Crew installing the rebar for the base slab of the influent/effluent troughs of the East Clarifier.

## Ashville's WRRF Project



### Construction in Photos



- April 24, 2017
- Crew installing the center column of the clarifier equipment for the East Clarifier.

## Ashville's WRRF Project



### Construction in Photos

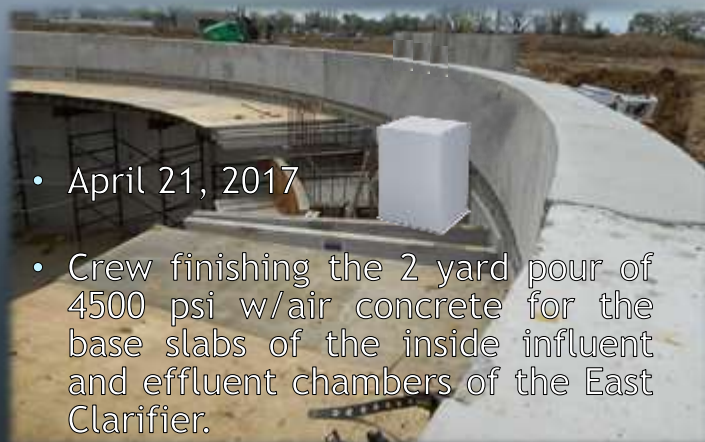


- April 21, 2017
- Crew installing the 16" DI piping for the effluent line of the East Clarifier.

## Ashville's WRRF Project



### Construction in Photos



- April 21, 2017
- Crew finishing the 2 yard pour of 4500 psi w/air concrete for the base slabs of the inside influent and effluent chambers of the East Clarifier.

## Ashville's WRRF Project



### Construction in Photos



- April 20, 2017
- Crew continuing to install the shoring and decking for the influent & effluent trough concrete forms of the East Clarifier.

## Ashville's WRRF Project



### Construction in Photos



- April 18, 2017
- Crew installing the scaffolding, shoring and decking for the Influent & effluent trough concrete forms of the East Clarifier.

## Ashville's WRRF Project



### Construction in Photos



- April 17, 2017
- Crew building the scaffolding used to support the concrete form decking for the influent and effluent troughs of the East Clarifier.

## Ashville's WRRF Project



### Construction in Photos



- April 17, 2017
- Crew continuing to back fill and compact dirt around the East Clarifier.

# Ashville's WRRF Project



## Construction in Photos



- April 13, 2017
- Crew backfilling and compacting dirt around the East Clarifier.

# Ashville's Water Resource Recover Facility Project Planning Timeline 2015 - 2017



3½ Year or 42 Months

### WRRF Plan Implementation

- a. 9 months submit detailed design plan (s) and a complete and approvable Permit to Install (PTI) application for the new WWTP, an application for an NPDES permit, and an anti-degradation addendum
  - Correct any deficiencies within 30 days of notification by letter from Ohio EPA
- b. 16 months commence construction of the new WWTP in accordance with the approved PTI
  - Within 7 days of commencing construction notify the CDO
- c. 40 months of the effective date of these Orders, Respondent shall complete construction of the new WWTP in accordance with the approved PTI;
  - Within 7 days of completing construction notify the CDO
- b. 60 days of completion of construction of the new WWTP, the WWTP shall attain operational level and shall meet the final effluent limitations in Respondent's NPDES permit;
  - Within 7 days of attain operational level and meet final effluent limitations notify the CDO

Timeline Begins June 16, 2014

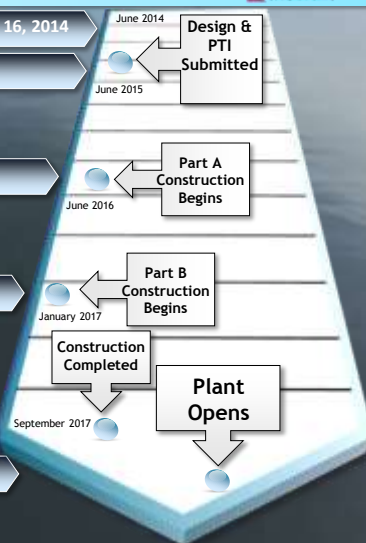
March 4, 2015

March 21, 2016

January 2, 2017

September 16, 2017

November 15, 2017







The collage features several logos and a project sign. On the left is the hio Ohio Environmental Protection Agency DEFA Loan logo. In the center is the Water Resource Recovery Facility Project AECOM logo, which includes a stylized water treatment plant icon and the Ohio Water Development Authority logo. To the right is a project sign for the Village of Ashville Sanitary Sewer Improvements Parts A & B, with a total project cost of \$43,089,605.00. The sign also lists the project manager, Robert W. Smith, and the project location, 1000 S. Lakeside Avenue, Ashville, OH. The background of the collage is light blue with water bubbles, and the bottom section is dark blue with white text.

**THANK YOU  
AECOM, FIELDS, AND PETERSON**

**ASHVILLE**  
Vision Statement