

# Construction in Photos

Sludge Storage Building 2017

Water Resource Recovery Department

Village of Ashville

Ashville's Water Resource Recovery Facility

Part A - Job No: 60440011

Presentation Available on Line at:

[www.ashvilleohio.gov](http://www.ashvilleohio.gov)



## Ashville's WRRF Project



## Vision Statement

- Remembering our rural heritage, Ashville will be a vibrant and friendly community, offering an enhanced quality of life achieved through planning, progress and collaboration.

It will be a welcoming place where people want to live and businesses prosper.

# Ashville's WRRF Project



## Construction Aerial Photo

From November 2016, April, May & November 2017

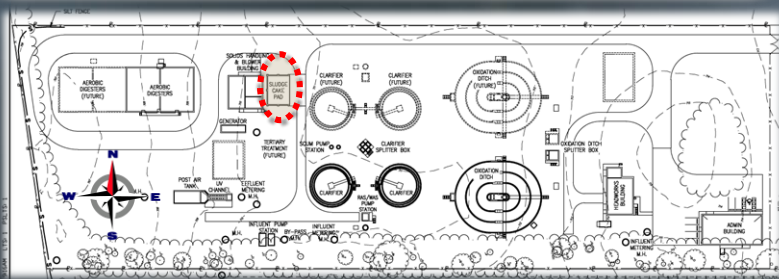


# Ashville's WRRF Project



## Construction in Photos

Sludge Storage Building (Cake Pad)



## Ashville's WRRF Project



### Construction in Photos



- September 26, 2017
- Crew working on site cleanup at Sludge Storage Building, east to west roadway view.

## Ashville's WRRF Project



### Construction in Photos



- August 16, 2017
- Crew has started the Rotary Press and processed the first small batch of dewatered sludge.

## Ashville's WRRF Project



### Construction in Photos



- August 16, 2017
- Crew installing the exterior concrete pad at the Sludge Storage building.

## Ashville's WRRF Project



### Construction in Photos



- August 1, 2017
- Crew installing the lighting for the Sludge Storage Building.

## Ashville's WRRF Project



### Construction in Photos

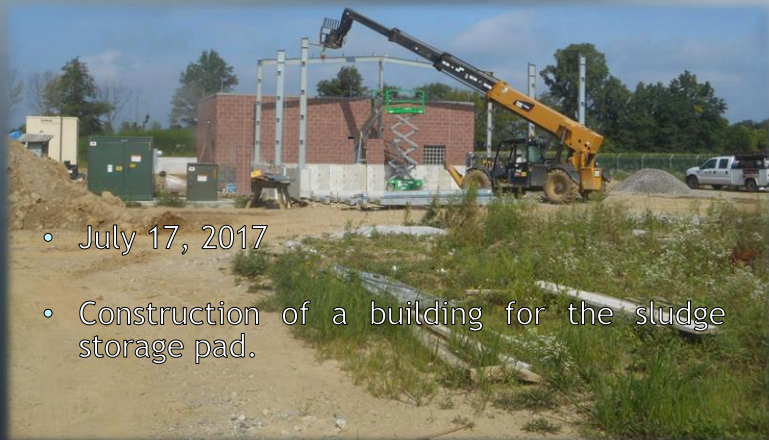


- July 18, 2017
- Construction continuing to install the building on the Sludge Storage pad.

## Ashville's WRRF Project



### Construction in Photos

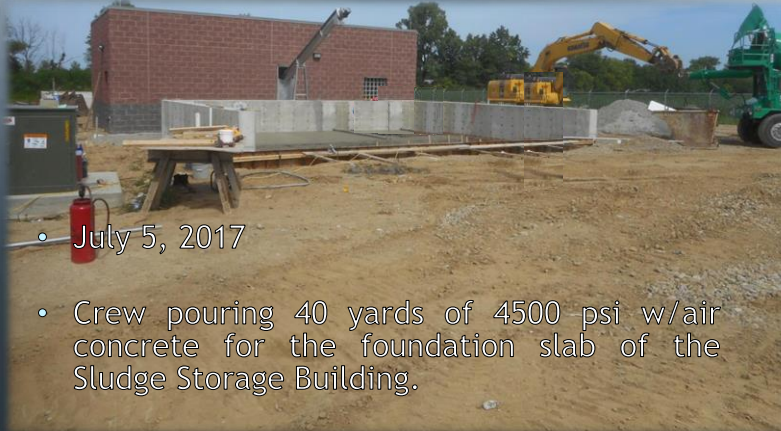


- July 17, 2017
- Construction of a building for the sludge storage pad.

## Ashville's WRRF Project



### Construction in Photos



- July 5, 2017
- Crew pouring 40 yards of 4500 psi w/air concrete for the foundation slab of the Sludge Storage Building.

## Ashville's WRRF Project



### Construction in Photos



- July 3, 2017
- Crew installing the 4 x 4 galvanized angle embed for the foundation slab of the Sludge Storage Building.

## Ashville's WRRF Project



### Construction in Photos



- June 30, 2017
- Crew installing the trench drain for the foundation slab of the Sludge Storage Building.

## Ashville's WRRF Project



### Construction in Photos



- June 28, 2017
- Crew installing the rebar for the foundation slab of the Sludge Storage Building.

## Ashville's WRRF Project



### Construction in Photos



- June 28, 2017
- Crew excavating and installing #304 limestone for the foundation slab of the Sludge Storage Building.

## Ashville's WRRF Project



### Construction in Photos



- June 27, 2017
- Crew installing the Screw Conveyor in the Solids Handling Building.



## Ashville's WRRF Project



### Construction in Photos



- June 27, 2017
- Crew and a second crew installing the underground plumbing for the trench drain in the Sludge Storage Building.

## Ashville's WRRF Project



### Construction in Photos



- June 26, 2017
- Crew installing #57 gravel around the Sludge Storage Building.

## Ashville's WRRF Project



### Construction in Photos



- June 23, 2017
- Crew stripping the concrete forms from the walls of the Sludge Storage Building.

## Ashville's WRRF Project



### Construction in Photos



- June 23, 2017
- Crew installing the interior and exterior face plates in the wall opening for the Screw Conveyor in the Sludge Storage Building.

## Ashville's WRRF Project



### Construction in Photos

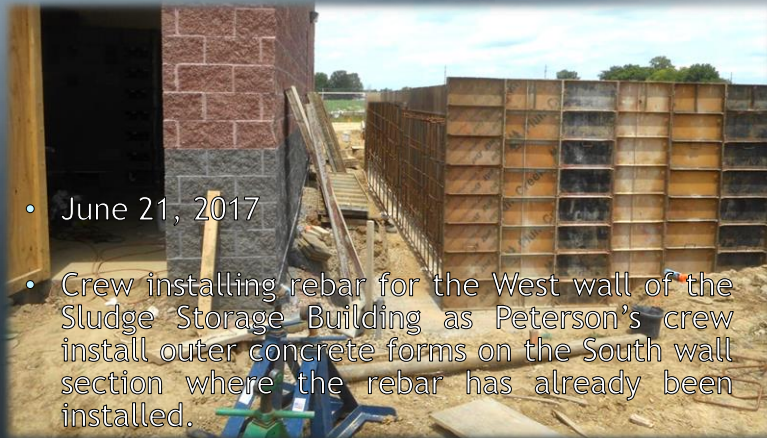


- June 22, 2017
- Crew pouring 36 yards of 4500 psi w/air concrete for the walls of the Sludge Storage Building.

## Ashville's WRRF Project



### Construction in Photos



- June 21, 2017
- Crew installing rebar for the West wall of the Sludge Storage Building as Peterson's crew install outer concrete forms on the South wall section where the rebar has already been installed.

## Ashville's WRRF Project



### Construction in Photos



- June 20, 2017
- Crew has installed the inside concrete forms for the walls of the Sludge Storage Building.

## Ashville's WRRF Project



### Construction in Photos



- June 19, 2017
- Crew installing the last section of wall dowel rebar for the footers of the Sludge Storage Building.

## Ashville's WRRF Project



### Construction in Photos



- June 19, 2017
- Crew pouring 24 yards of 3000 psi concrete for the footers of the Sludge Storage Building.

## Ashville's WRRF Project



### Construction in Photos



- June 16, 2017
- Crew installing the 2 x 4 rebar templates and second crew installing the wall dowel rebar for the footers of the Sludge Storage Building.

# Ashville's WRRF Project



## Construction in Photos



- June 14, 2017
- Crew excavating for the footers of the Sludge Storage Building.

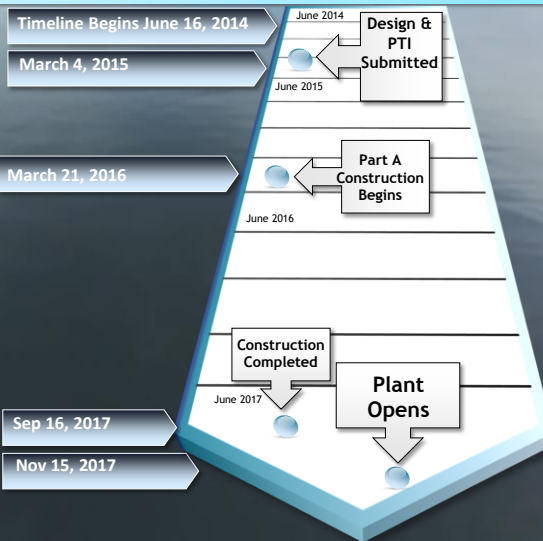
# Ashville's Water Resource Recover Facility Project Planning Timeline 2015 - 17



3½ Year or 42 Months

### WRRF Plan Implementation

- 9 months submit detailed design plan (s) and a complete and approvable Permit to Install (PTI) application for the new WWTP, an application for an NPDES permit, and an anti-degradation addendum
  - Correct any deficiencies within 30 days of notification by letter from Ohio EPA
- 16 months commence construction of the new WWTP in accordance with the approved PTI
  - Within 7 days of commencing construction notify the CDO
- 40 months of the effective date of these Orders, Respondent shall complete construction of the new WWTP in accordance with the approved PTI;
  - Within 7 days of completing construction notify the CDO
- 60 days of completion of construction of the new WWTP, the WWTP shall attain operational level and shall meet the final effluent limitations in Respondent's NPDES permit;
  - Within 7 days of attain operational level and meet final effluent limitations notify the CDO





Next Step Part B

**THANK YOU**

**ASHVILLE**  
Vision Statement