

# Construction in Photos

West Clarifier from April 1, 2017

Water Resource Recovery Department

Village of Ashville

Ashville's Water Resource Recovery Facility

Part A - Job No: 60440011

Presentation Available on Line at:

[www.ashvilleohio.gov](http://www.ashvilleohio.gov)



## Ashville's WRRF Project



### Vision Statement

Remembering our rural heritage, Ashville will be a vibrant and friendly community, offering an enhanced quality of life achieved through planning, progress and collaboration.

It will be a welcoming place where people want to live and businesses prosper.

# Ashville's WRRF Project



## Construction Aerial Photo

From November 2016, April, May & November 2017

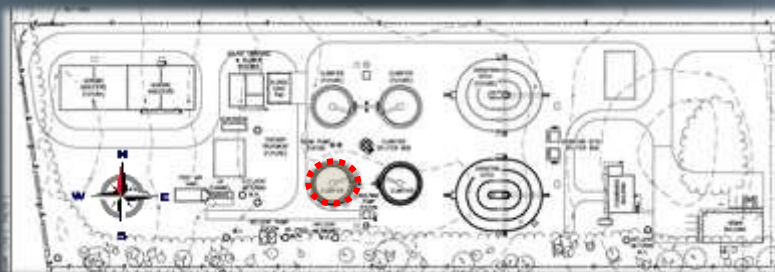


# Ashville's WRRF Project



## Construction in Photos

Two Clarifiers are after the Oxidation Ditch. A clarifier is generally used to remove solid particulates or suspended solids from liquid for clarification and (or) thickening. Concentrated impurities, discharged from the bottom of the tank are known as sludge, while the particles that float to the surface of the liquid are called scum.



West Clarifier

## Ashville's WRRF Project



### Construction in Photos



- July 13, 2017
- Crew installing the brass scraper blades on the scraper arms of the West Clarifier.

## Ashville's WRRF Project



### Construction in Photos



- July 10, 2017
- Crew pouring 16 yards of 4000 psi w/air grout for the 2 inches of floor grout for the West Clarifier.

## Ashville's WRRF Project



### Construction in Photos

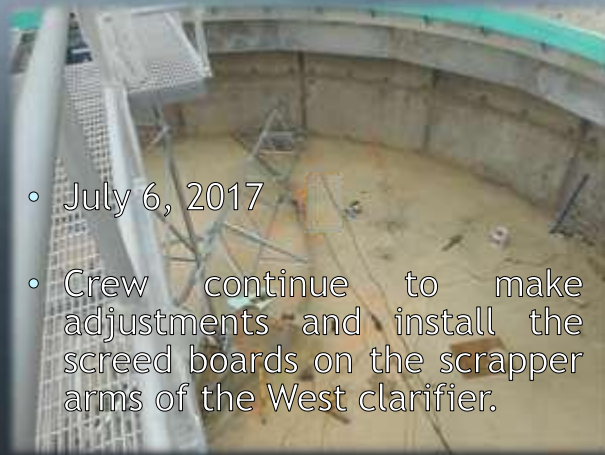


- July 7, 2017
- Crew installing the 2 inches of 4000 psi w/air floor grout for the East Clarifier.

## Ashville's WRRF Project



### Construction in Photos



- July 6, 2017
- Crew continue to make adjustments and install the screed boards on the scrapper arms of the West clarifier.



## Ashville's WRRF Project



### Construction in Photos

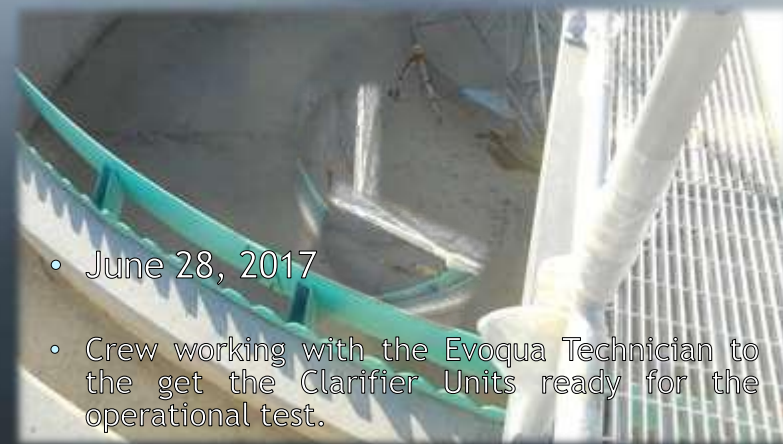


- July 5, 2017
- Crew adjusting and installing the screed boards on the scrapper arms of the West clarifier.

## Ashville's WRRF Project



### Construction in Photos



- June 28, 2017
- Crew working with the Evoqua Technician to get the Clarifier Units ready for the operational test.

## Ashville's WRRF Project



### Construction in Photos



- June 22, 2017
- Crew installing conduit and terminating control wiring for the electric scum gate on the West Clarifier.

## Ashville's WRRF Project



### Construction in Photos



- June 8, 2017
- Crew installing the conduit duct banks for the Clarifiers.

## Ashville's WRRF Project



### Construction in Photos



- June 2, 2017
- Crew grinding the concrete walls of the Influent/Effluent chambers of the West Clarifier.

## Ashville's WRRF Project



### Construction in Photos



- May 24, 2017
- Crew installing the Scum Baffle in the West Clarifier.



## Ashville's WRRF Project



### Construction in Photos



- May 23, 2017
- Crew installing the weir plate on the effluent trough of the West Clarifier.

## Ashville's WRRF Project



### Construction in Photos



- May 19, 2017
- Crew working on installing the aluminum stairs and handrail for the Clarifiers.



## Ashville's WRRF Project



### Construction in Photos



- May 18, 2017
- Crew installing the concrete wall forms for the exterior Influent/Effluent chambers of the Clarifiers.

## Ashville's WRRF Project



### Construction in Photos



- May 18, 2017
- Crew continuing to install the 30" DI piping from the Oxidation Ditch to the Clarifier splitter box.

## Ashville's WRRF Project



### Construction in Photos



- May 17, 2017
- Crew installing the wall rebar for the exterior Influent/Effluent chambers for both Clarifiers.

## Ashville's WRRF Project



### Construction in Photos



- May 16, 2017
- Crew installing the concrete forms for the walls of the exterior Influent/Effluent chambers of the Clarifiers.

## Ashville's WRRF Project



### Construction in Photos



- May 15, 2017
- Crew finishing the 5 yard concrete pour for the base slabs of the exterior influent/effluent chambers of the Clarifiers.

## Ashville's WRRF Project



### Construction in Photos



- May 15, 2017
- Crew installing the skimmer assembly for the West Clarifier.



## Ashville's WRRF Project



### Construction in Photos



- May 12, 2017
- Crew installed the Drive Assembly and Access Bridge for the West Clarifier.

## Ashville's WRRF Project



### Construction in Photos



- May 12, 2017
- Crew installing the rebar for the base slab of the exterior Influent/Effluent chambers for both Clarifiers.



## Ashville's WRRF Project



### Construction in Photos



- May 11, 2017
- Crew installing the concrete forms and DBR's for the exterior Influent/Effluent chambers of the Clarifiers.

## Ashville's WRRF Project



### Construction in Photos



- May 11, 2017
- Crew grinding the concrete trough walls of the West Clarifier.

## Ashville's WRRF Project



### Construction in Photos



- May 8, 2017
- Crew installed the Target Baffles under the Influent trough of the West Clarifier.

## Ashville's WRRF Project



### Construction in Photos



- May 5, 2017
- Crew installing the clarifier scum box for the West Clarifier.

## Ashville's WRRF Project



### Construction in Photos

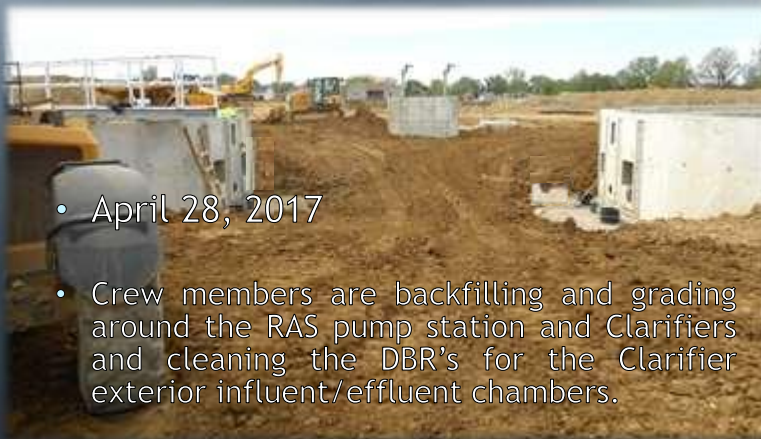


- May 3, 2017
- Crew installing the galvanized skirt baffle for the West Clarifier.

## Ashville's WRRF Project



### Construction in Photos



- April 28, 2017
- Crew members are backfilling and grading around the RAS pump station and Clarifiers and cleaning the DBR's for the Clarifier exterior influent/effluent chambers.

## Ashville's WRRF Project



### Construction in Photos



- April 27, 2017
- Crew installing the drive cage of the clarifier equipment for the West Clarifier.

## Ashville's WRRF Project



### Construction in Photos



- April 26, 2017
- Crew installing the 6" SCH-80 PVC scum lines for the East & West Clarifiers.



## Ashville's WRRF Project



### Construction in Photos



- April 25, 2017
- Crew installing the 16" DI influent piping for West Clarifier.

## Ashville's WRRF Project



### Construction in Photos



- April 25, 2017
- Crew installing the handrail and grating on the access bridges of the East and West Clarifiers.

## Ashville's WRRF Project



### Construction in Photos



- April 24, 2017
- Crew stripping the concrete forms from the influent/effluent troughs of the West Clarifier.

## Ashville's WRRF Project



### Construction in Photos



- April 20, 2017
- Crew installing the 16" DI piping for the effluent line of the West Clarifier.

## Ashville's WRRF Project



### Construction in Photos



- April 19, 2017
- Crew installing the concrete forms for the divider wall of the influent & effluent troughs of the West Clarifier.

## Ashville's WRRF Project



### Construction in Photos



- April 19, 2017
- Crew pouring 14 yards of 4500 psi w/air concrete for the weir and divider walls of the influent & effluent troughs of the West Clarifier.



## Ashville's WRRF Project



### Construction in Photos



- April 18, 2017
- Crew installing the concrete forms for the divider wall of the influent & effluent troughs of the West Clarifier.

## Ashville's WRRF Project



### Construction in Photos



- April 17, 2017
- Crew pouring 28 yards of 4500 psi w/air concrete for the base slab of the influent and effluent troughs of the West Clarifier.



## Ashville's WRRF Project



### Construction in Photos

- April 14, 2017
- Building & installing the outer wall rebar for the influent & effluent troughs of the West Clarifier.



## Ashville's WRRF Project



### Construction in Photos

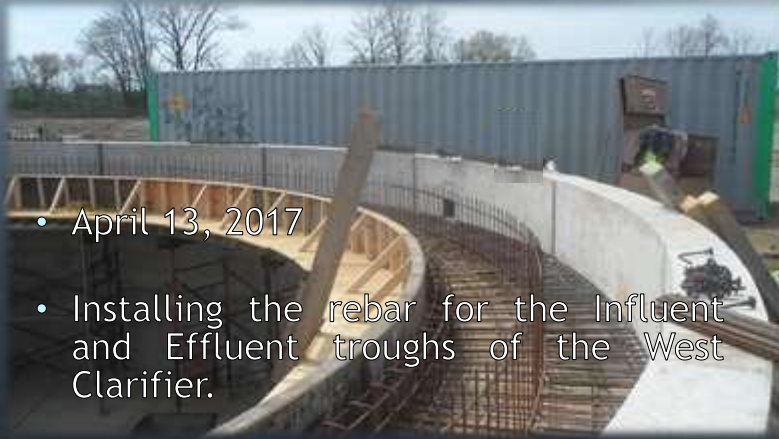
- April 14, 2017
- Crew continuing to install the concrete forms for the Influent & Effluent troughs of the West Clarifier.



## Ashville's WRRF Project



### Construction in Photos



- April 13, 2017
- Installing the rebar for the Influent and Effluent troughs of the West Clarifier.

## Ashville's WRRF Project



### Construction in Photos



- April 12, 2017
- Installing the rebar for the Influent and Effluent troughs of the West Clarifier.

## Ashville's WRRF Project



### Construction in Photos



- April 11, 2017
- Crew installing the DBR's and concrete forms for the Influent & Effluent troughs of the West Clarifier.

## Ashville's WRRF Project



### Construction in Photos



- April 10, 2017
- Crew installing DBR's and concrete forms for the Influent & Effluent troughs of the West Clarifier.

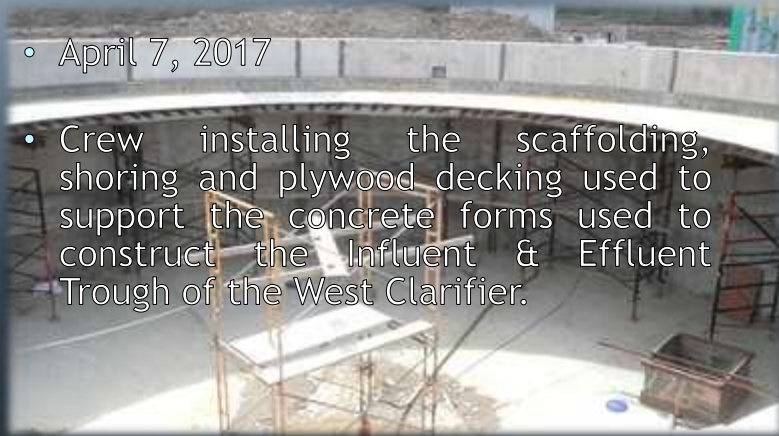
## Ashville's WRRF Project



### Construction in Photos

- April 7, 2017

- Crew installing the scaffolding, shoring and plywood decking used to support the concrete forms used to construct the Influent & Effluent Trough of the West Clarifier.



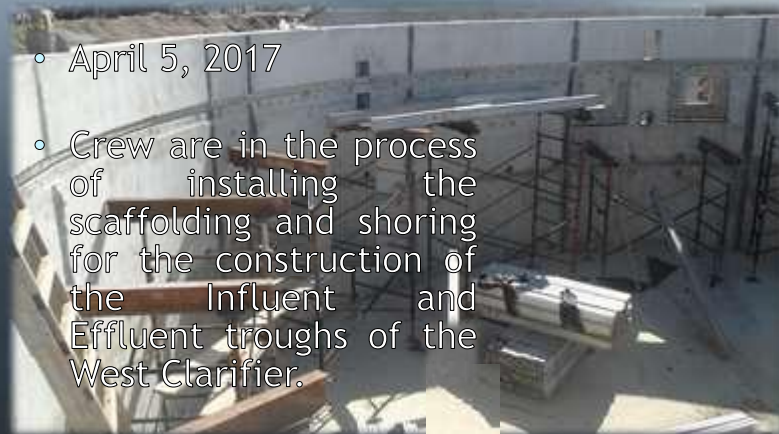
## Ashville's WRRF Project



### Construction in Photos

- April 5, 2017

- Crew are in the process of installing the scaffolding and shoring for the construction of the Influent and Effluent troughs of the West Clarifier.





# Ashville's Water Resource Recover Facility Project Planning Timeline 2015 - 2017



3½ Year or 42 Months

## WRRF Plan Implementation

- a. 9 months submit detailed design plan (s) and a complete and approvable Permit to Install (PTI) application for the new WWTP, an application for an NPDES permit, and an anti-degradation addendum
  - Correct any deficiencies within 30 days of notification by letter from Ohio EPA
- b. 16 months commence construction of the new WWTP in accordance with the approved PTI
  - Within 7 days of commencing construction notify the CDO
- c. 40 months of the effective date of these Orders, Respondent shall complete construction of the new WWTP in accordance with the approved PTI;
  - Within 7 days of completing construction notify the CDO
- b. 60 days of completion of construction of the new WWTP, the WWTP shall attain operational level and shall meet the final effluent limitations in Respondent's NPDES permit;
  - Within 7 days of attain operational level and meet final effluent limitations notify the CDO

Timeline Begins June 16, 2014

March 4, 2015

March 21, 2016

January 2, 2017

September 16, 2017

November 15, 2017



THANK YOU  
AECOM, FIELDS, AND PETERSON

ASHVILLE  
Vision Statement