

Construction in Photos

Miscellaneous Items 2017

Water Resource Recovery Department

Village of Ashville

Ashville's Water Resource Recovery Facility

Part A - Job No: 60440011

Presentation Available on Line at:

www.ashvilleohio.gov



Ashville's WRRF Project



Vision Statement

- Remembering our rural heritage, Ashville will be a vibrant and friendly community, offering an enhanced quality of life achieved through planning, progress and collaboration.

It will be a welcoming place where people want to live and businesses prosper.

Ashville's WRRF Project



Construction Aerial Photo

From November 2016, April, May & June 2017



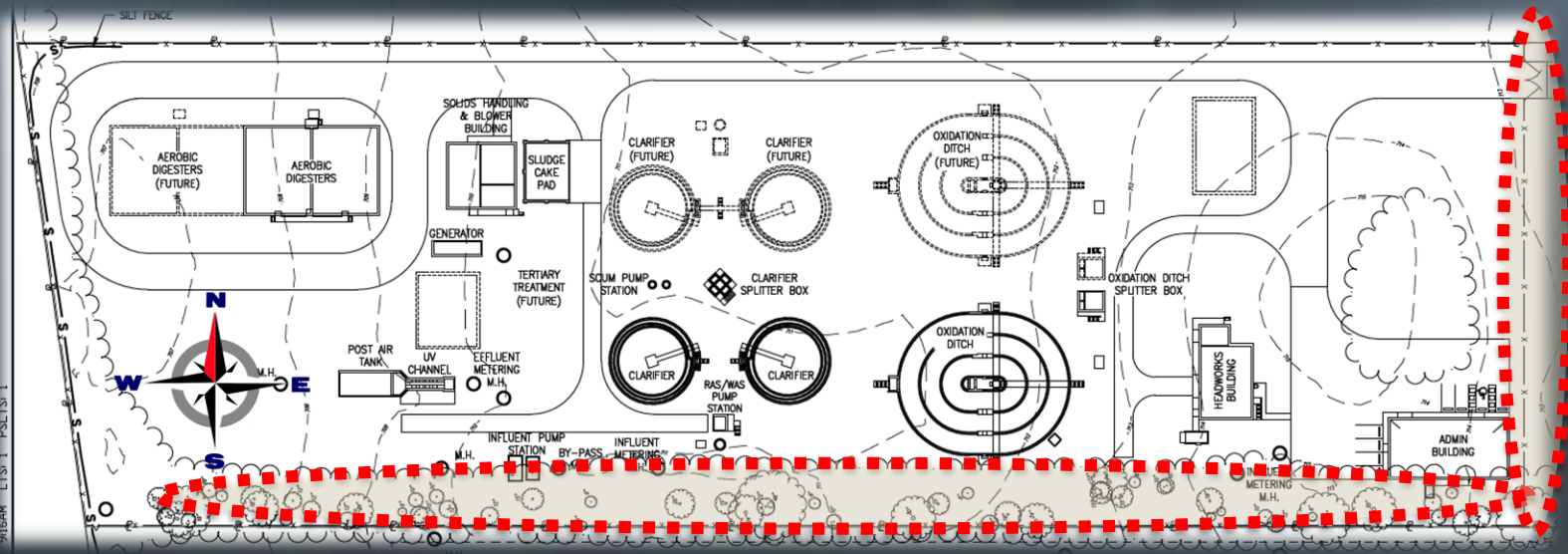
Ashville's WRRF Project



Construction in Photos

This section will deal with Miscellaneous Items at the Facility:

- The Mound to the South of the Facility.
- The Driveway connecting Rail Street to State Route 752.



Ashville's WRRF Project



Construction in Photos



- June 20, 2017
- Crew leveling out some dirt piles with the Dozer.

Ashville's WRRF Project



Construction in Photos



- June 22, 2017
- Crew leveling and compacting dirt for rough grade around the plant site.

Ashville's WRRF Project



Construction in Photos



- June 27, 2017
- Crew pulling the fiber optic cable and a fabric sleeve for future fiber optic cable.

Ashville's WRRF Project



Construction in Photos



- July 21, 2017
- Crew starting to work on the Earthen Berm along the South line of the WRRF site.

Ashville's WRRF Project



Construction in Photos



- July 20, 2017
- Crew installing the South section of the WRRF access road to Rail Street.

Ashville's WRRF Project



Construction in Photos

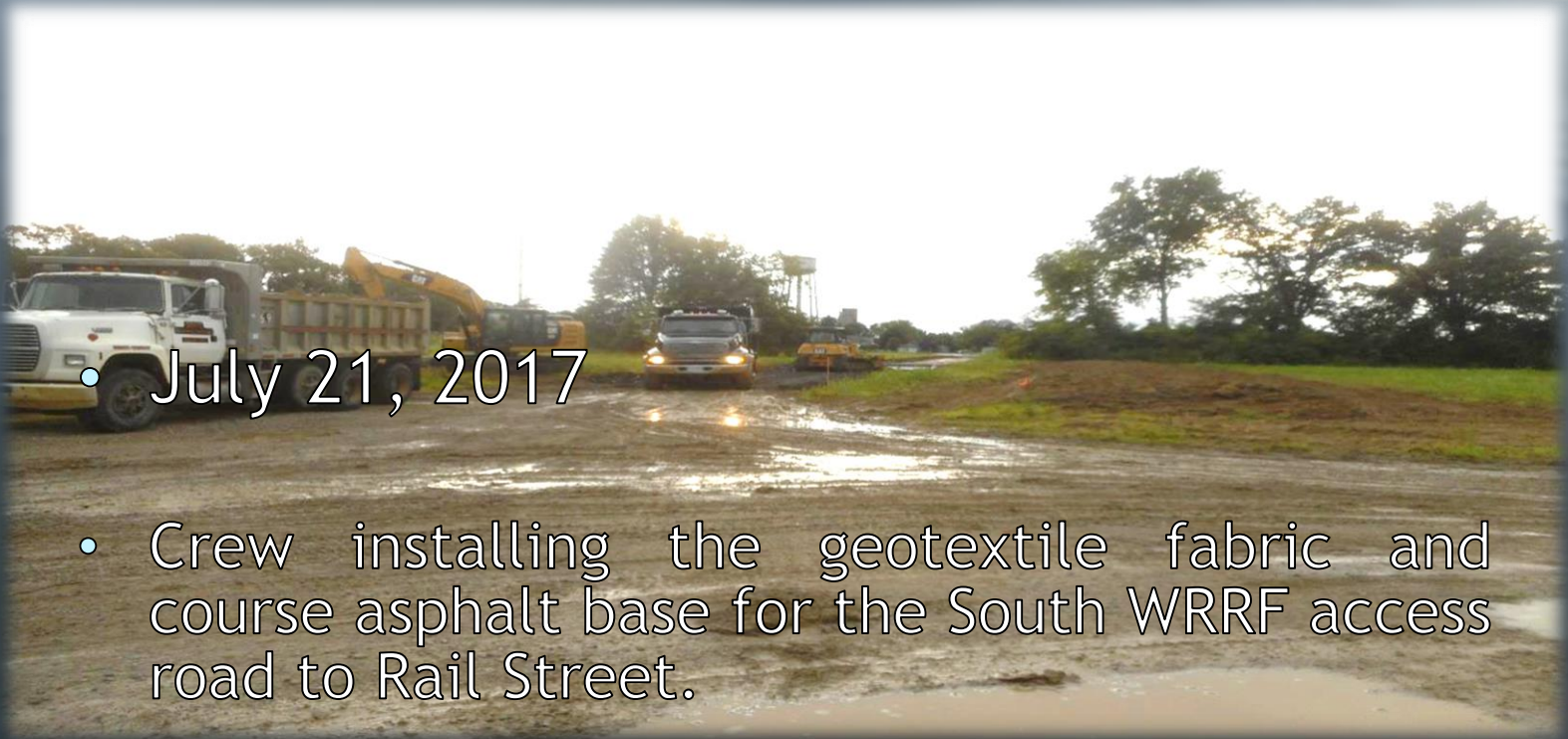


- July 21, 2017
- Crew installing the geotextile fabric and course asphalt base for the South WRRF access road to Rail Street.

Ashville's WRRF Project



Construction in Photos



- July 21, 2017

- Crew installing the geotextile fabric and course asphalt base for the South WRRF access road to Rail Street.

Ashville's Water Resource Recover Facility Project Planning Timeline 2015 - 2017



3½ Year or 42 Months

WRRF Plan Implementation

- a. 9 months submit detailed design plan (s) and a complete and approvable Permit to Install (PTI) application for the new WWTP, an application for an NPDES permit, and an anti-degradation addendum
 - Correct any deficiencies within 30 days of notification by letter from Ohio EPA
- b. 16 months commence construction of the new WWTP in accordance with the approved PTI
 - Within 7 days of commencing construction notify the CDO
- c. 40 months of the effective date of these Orders, Respondent shall complete construction of the new WWTP in accordance with the approved PTI;
 - Within 7 days of completing construction notify the CDO
- b. 60 days of completion of construction of the new WWTP, the WWTP shall attain operational level and shall meet the final effluent limitations in Respondent's NPDES permit;
 - Within 7 days of attain operational level and meet final effluent limitations notify the CDO

Timeline Begins June 16, 2014

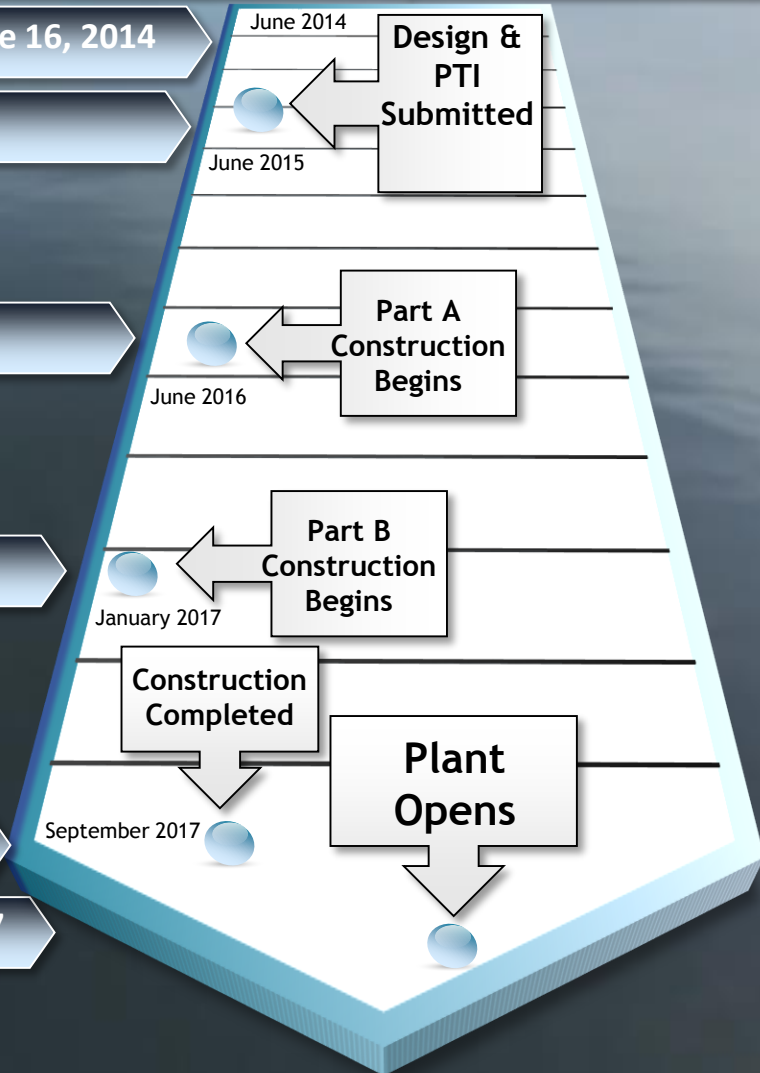
March 4, 2015

March 21, 2016

January 2, 2017

September 16, 2017

November 15, 2017





Next Step Part B

THANK YOU

ASHVILLE
Vision Statement