

Welcome to *Ashville's* Update on WRRF



Water Resource Recovery Facility (WRRF) *Village of Ashville*

On Line at:

www.ashvilleohio.gov

August 4, 2014

Ashville's WRRF Project



Vision Statement

- Remembering our rural heritage, Ashville will be a vibrant and friendly community, offering an enhanced quality of life achieved through planning, progress and collaboration.

It will be a welcoming place where people want to live and businesses prosper.

Ashville's WRRF Project



URS

Introduction

Village Council & Utility Committee

Jeffrey R. Kerr P.E., ENV-SP
Senior Project Manager
URS Corporation
277 West Nationwide Boulevard
Columbus, Ohio 43215

Matthew S. Noelker, P.E.
Project Engineer
URS Corporation
277 West Nationwide Boulevard
Columbus, OH 43215

Utility Committee
Sandipan Aditya, R.A. LEED AP BD+C
Project Designer
URS Corporation
Architects . Engineers . Planners
277 West Nationwide Blvd
Columbus, OH 43215

August 4, 2014

Ashville's WRRF Project



URS

AGENDA

Village of Ashville Water Resource Recovery Facility Improvements 2014 Progress Meeting

August 4, 2014
6:30 p.m.

DISCUSSION ITEMS:

1. Project Background

- Existing wastewater treatment plant (WWTP) is hydraulically overloaded during wet weather events. This has caused Ohio EPA NPDES permit violations in the past.
- The Ohio EPA has issued Findings and Orders that give a schedule for designing and constructing a new treatment facility. These orders were signed and finalized on June 16, 2014. These orders require design to be completed in 9 months (by March 2015), construction to be initiated in 16 (by October 2015) and construction to be completed in 40 months (by October 2017).
- A new site 10 acre site north of May Avenue and Rail Avenue was acquired in 2013. Design of a new Water Resource Recovery Facility (WRRF) on this site began in 2014.

2. Work Completed to Date

- Environmental site assessment.
- Soil borings and a geotechnical report (Phases 1 and 2).
- Field topographic survey.
- Flow monitoring on Lexington Avenue in progress. Will be completed next week.
- Design of WRRF, Outfall Sewer and Force Main is 30-40% complete. Design will be 60% complete in 1-2 months.

August 4, 2014

Ashville's WRRF Project



URS

AGENDA

3. Water Resource Recovery Facility (See Figure 1 Site Layout & Figure 2 Yard Piping Plan)

- New plant capacity 0.8 MGD average, 4.0 MGD peak hour.
- Pump Station (raw wastewater pumping from north tributary area of Ashville)
- Headworks Building (with Screening and Grit Removal)
- 3 Channel Oxidation Ditch (biological treatment and nutrient removal)
- 2 -50 Foot Diameter Clarifiers (settling)
- Return Activated Sludge Pump Station (sludge return)
- Ultraviolet Disinfection & Post-Aeration Tank (disinfection and aeration)
- Aerobic Digester Tanks (sludge digestion)
- Solids Handling & Blower Building (with blowers and sludge press)
Sludge press will dewater sludge prior to land application or landfilling.
- Administration Building (with offices, a laboratory and a control room)

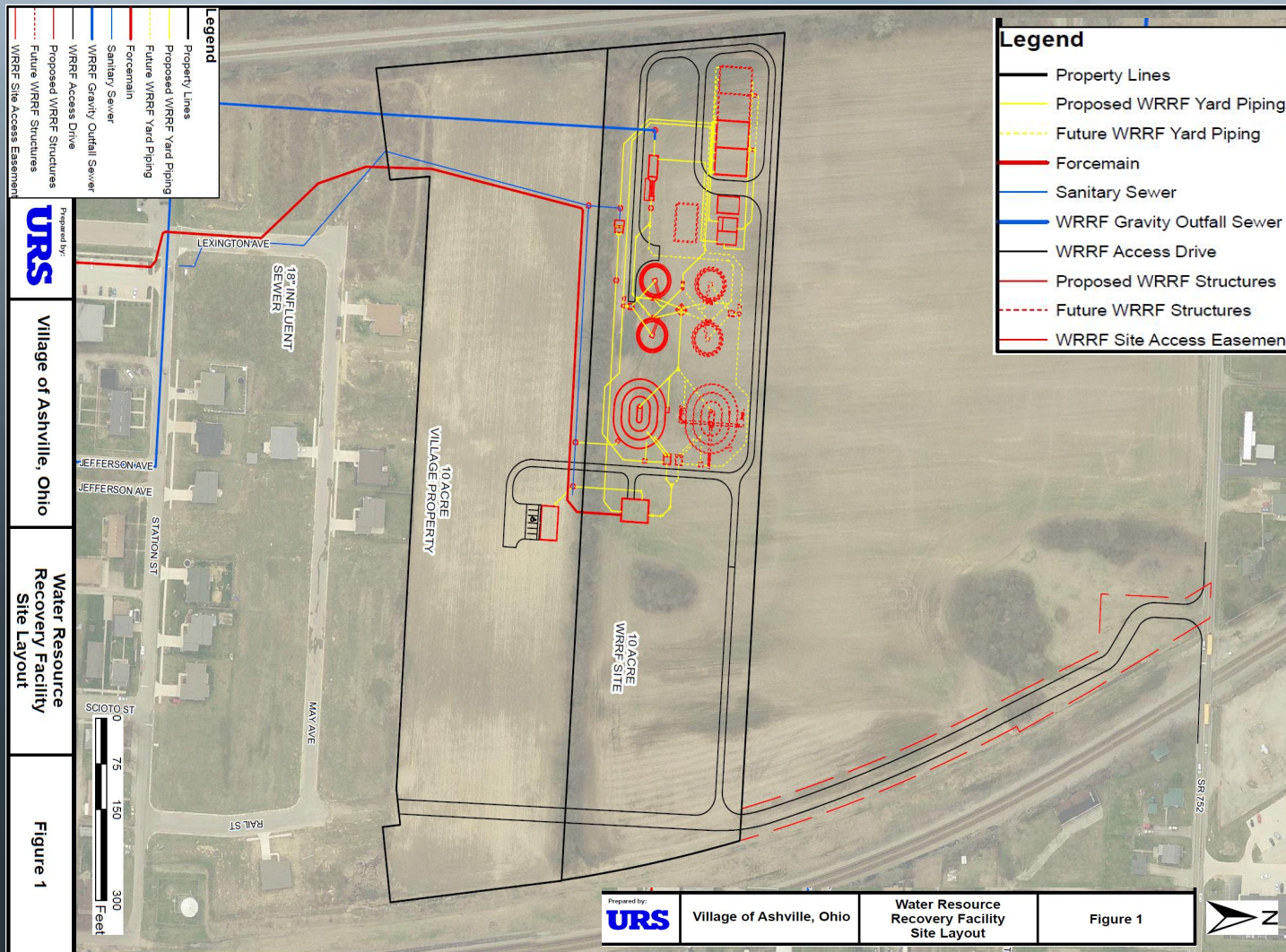
4. Pump Station/Force Main Alignments (See Figure 3)

- Will pump south tributary area of Ashville to new WRRF site. Located at old WWTP site.
- The 10" forcemain alignment runs north along Scioto Street, west along Rich Street, and north along Lexington Street.

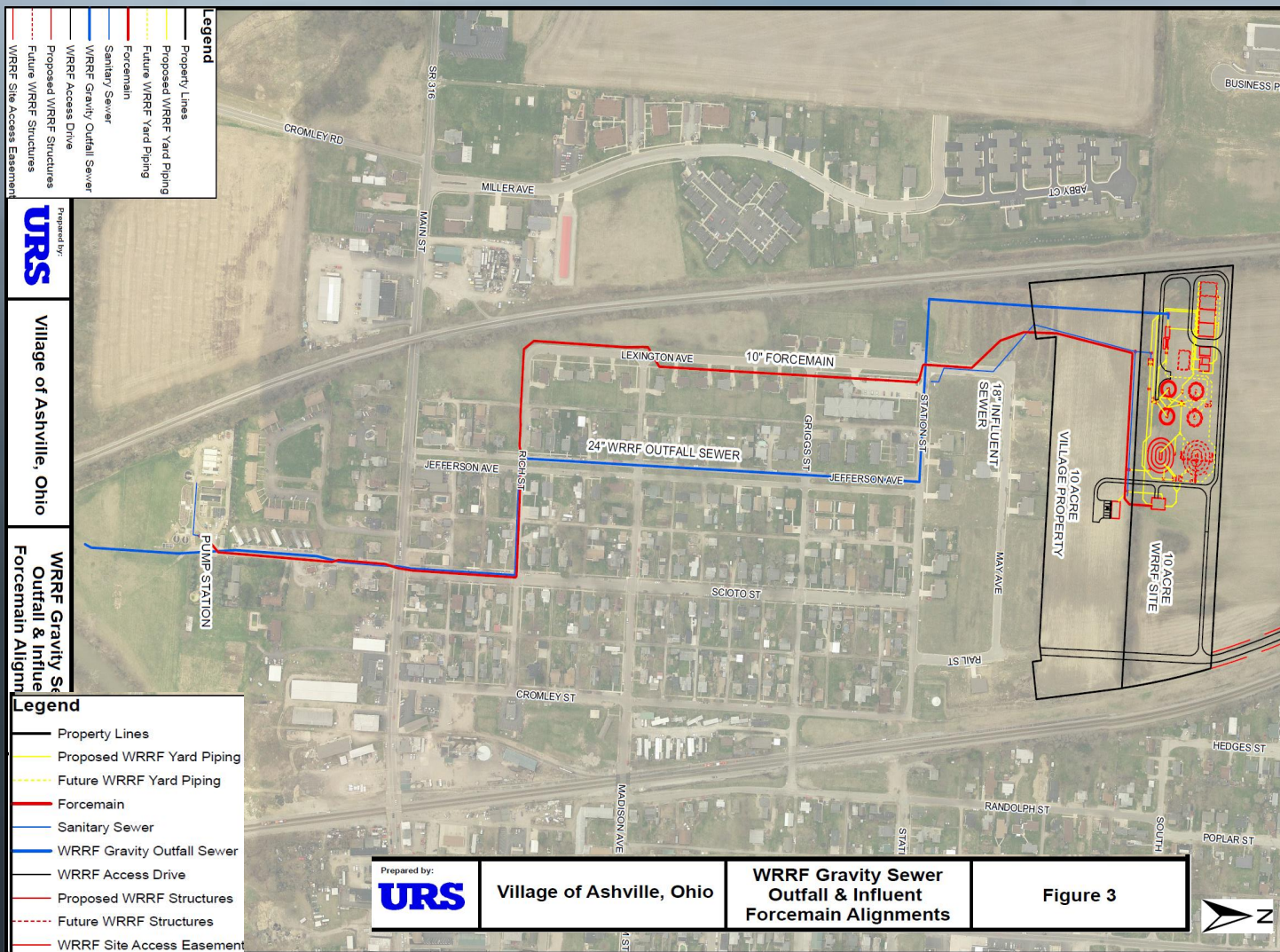
5. Outfall Sewer (See Figure 3)

- 24" gravity sewer will convey treated wastewater from the WRRF to the Little Walnut Creek.
- Sewer alignment runs south along Jefferson Ave, east along Rich Street, and south along Scioto Street. Unable to locate in Lexington due to sanitary sewer and storm sewer interference.

Ashville's WRRF Project

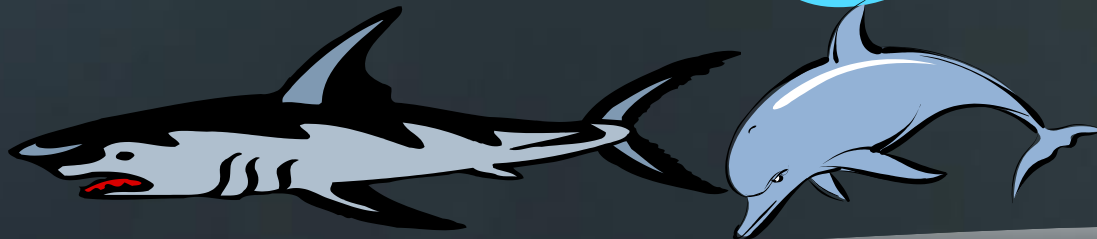


Ashville's WRRF Project





Thank You



August 4, 2014