

# Welcome to *Ashville's* Update on WRRF

Attachment 1



## Water Resource Recovery Facility (WRRF) *Village of Ashville*

On Line at:

[www.ashvilleohio.gov](http://www.ashvilleohio.gov)

# Ashville's WRRF Project



Attachment 1

## **AECOM** Agenda

AECOM  
277 West Nationwide Boulevard  
Columbus, OH 43215-2566  
Address Line 3  
[www.aecom.com](http://www.aecom.com)

614 464 4500  
614 464 0588

tel  
fax

<b>Subject</b>	<b>Water Resource Recovery Improvements, 2015</b>
<b>Date</b>	January 26, 2015
<b>Time</b>	6:30 p.m.
<b>Location</b>	Ashville, Ohio
<b>AECOM Project No.</b>	14578119
<b>Project Name</b>	Ashville Water Resource Recovery Improvements Design

# Ashville's WRRF Project



Attachment 1

## DISCUSSION ITEMS:

### 1. Project Schedule

- The Ohio EPA has issued Findings and Orders that give a schedule for designing and constructing a new treatment facility. These orders were signed and finalized on June 16, 2014. These orders require:
  - 1) Design to be completed in 9 months (by March 2015),
  - 2) Construction to be initiated in 16 months (by October 2015), and
  - 3) Construction to be completed in 40 months (by October 2017).
- We estimate the following schedule based on funding agency requirements:
  - 1) Submit a PTI to Ohio EPA in mid February, 2015.
  - 2) Provide bidding in April/May 2015.
  - 3) Award project in June/July 2015.
  - 4) Begin construction in July/August, 2015.
  - 5) Complete construction in July/August, 2017.
- Funding by OPWC (if offered) will not allow construction to proceed prior to July, 2015.
- A conference call will be held with Ohio EPA, DEFA on February, 2, 2015 to discuss their required funding schedule.

January 26, 2015

# Ashville's WRRF Project

Attachment 1



## DISCUSSION ITEMS CONTINUED:

### 2. Work Completed to Date

- Design of WRRF (Part A) and Outfall Sewer and Force Main (Part B). Sewer and force main design is 90-95% complete.
- WRRF design is 60%-70% complete.

### 3. Items Required Prior to Bidding

- Sign and record two easements on Scioto Street.
- Complete annexation of WRRF property and assign an address for utilities.
- Obtain Permit to Install and revised NPDES Permit from Ohio EPA.
- Submit plans to utility companies and address their comments.

January 26, 2015

# Ashville's WRRF Project



Attachment 1

## DISCUSSION ITEMS CONTINUED:

### 4. Items Required Prior to Construction

- Receive building permit approvals.
- Request and receive Notice to Proceed from OPWC (if funding offered).
- Submit bid packages, bid tabulation, engineer's letter and other documents requested by Ohio EPA DEFA.
- Execute final loan agreement and receive funding approval from DEFA.
- Execute contracts with selected contractor at Preconstruction Meeting. Issue Notice of Award and Notice to Proceed. Receive other documents from contractor.

January 26, 2015

# Ashville's WRRF Project



Attachment 1

## DISCUSSION ITEMS CONTINUED:

### 5. Water Resource Recovery Facility (See Part A Plans)

- See attached plan of proposed improvements.
- Removal of trees is needed in fence row south of the plant site due to sewer, force main and driveway construction. Replace deciduous trees with conifers to provide screening of the site.
- Plant driveways currently shown as concrete, asphalt or gravel. Gravel driveways can be provided to reduce cost.
- Extend Rail Street as a drive to the WRRF site. Add farm gate.
- Provide drive from SR 752 to WRRF site. Add farm gate.
- Provide demolition of old WWTP structures and equipment except for Administration Building and Maintenance Building.

January 26, 2015

# Ashville's WRRF Project



Attachment 1

## DISCUSSION ITEMS CONTINUED:

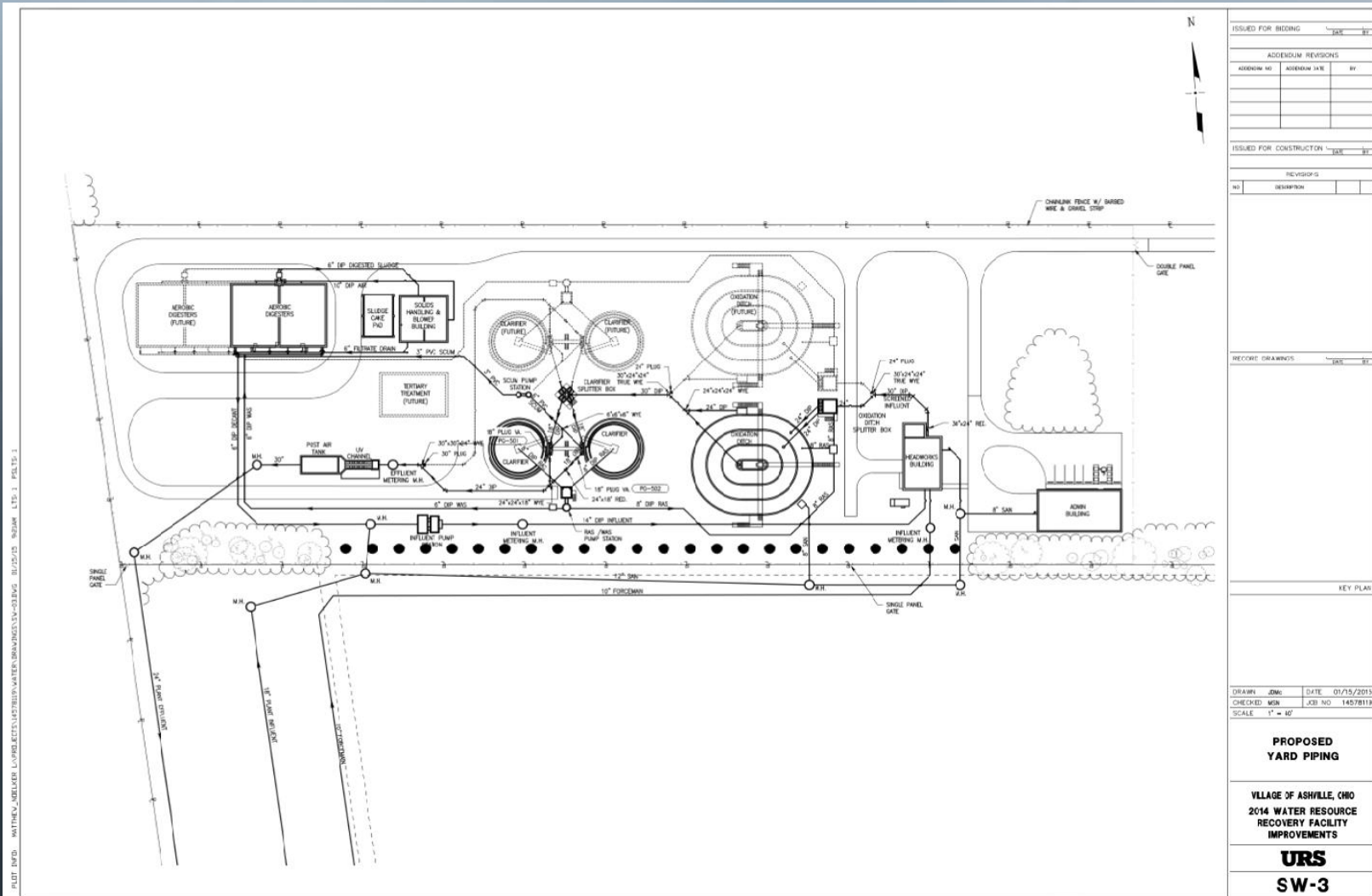
6. **Force Main and Outfall Sewer Alignments (See Part B Plans )**
  - See attached plan showing proposed alignments.
  - The 10" forcemain alignment runs north along Scioto Street, west along Rich Street, and north along Lexington Street. A new pump station at the old WWTP site will pump north to the new WRRF site
  - The 24" outfall sewer will convey treated wastewater east along Station Street, south in alley west of Jefferson Ave, east along Rich Street, and south along Scioto Street and discharge to an existing outfall to Little Walnut Creek.
  - Village staff are currently reviewing plans.
  - Scioto Street south of Main Street will be completely replaced.
  - Water/sewer/storm work in Main Street is required. We propose to maintain one- lane traffic.

January 26, 2015

# Ashville's WRRF Project



## Attachment 1



PLOT INFO: MATTHEW\_MELIKER\PROJECTS\ASTRESH\WATER\DRAWINGS\YD-03BIBG\_BUDG015\_N2004\_L15-3\_P1515-1

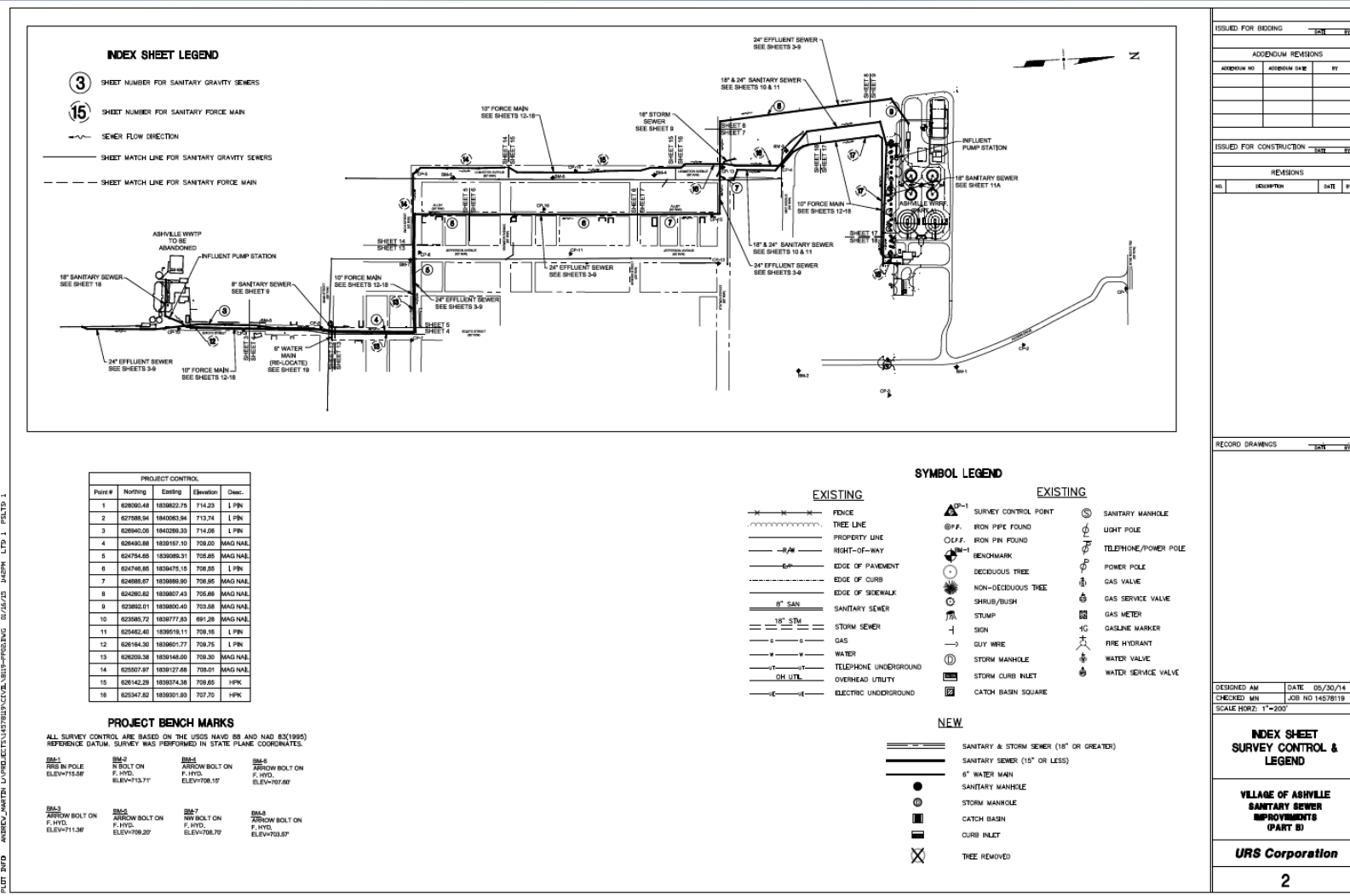
ISSUED FOR BIDDING		DATE	BY
ADDENDUM REVISIONS			
ADDENDUM NO.	ADDENDUM DATE	BY	
ISSUED FOR CONSTRUCTION			
REVISIONS			
NO.	DESCRIPTION	DATE	BY
RECORD DRAWINGS			
KEY PLAN			
DRAWN	JDM	DATE	01/15/2015
CHECKED	MRN	JOB NO.	14578113
SCALE	1" = 10'		
<b>PROPOSED YARD PIPING</b>			
VILLAGE OF ASHVILLE, OHIO 2014 WATER RESOURCE RECOVERY FACILITY IMPROVEMENTS			
<b>URS</b> <b>SW-3</b>			



# Ashville's WRRF Project

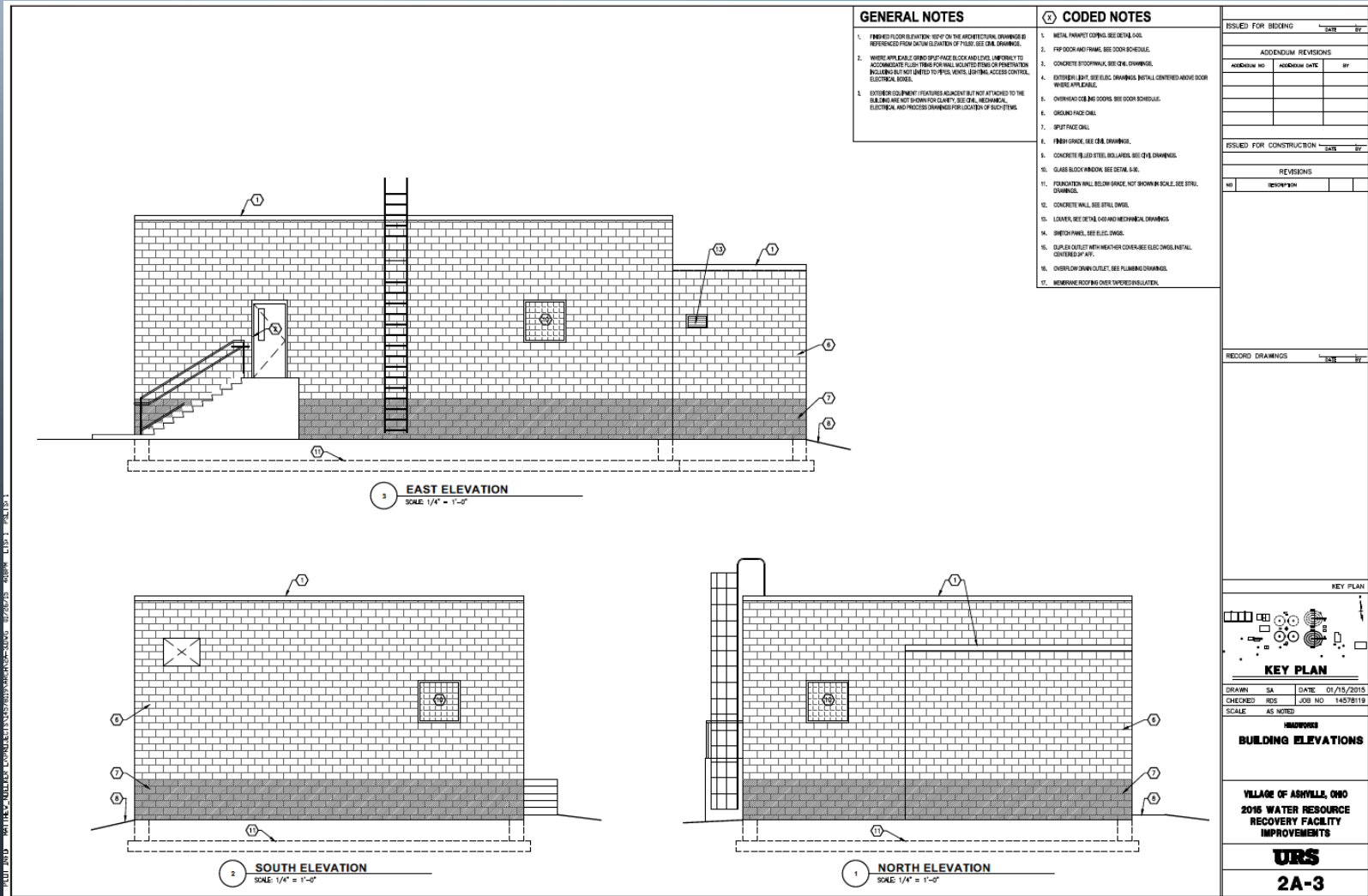


## Attachment 1



# Ashville's WRRF Project

## Attachment 1



- GENERAL NOTES**
1. FINISHED FLOOR ELEVATION: 101'0" ON ARCHITECTURAL DRAWINGS REFERENCED FROM DATUM ELEVATION OF FINISH. SEE O&M DRAWINGS.
  2. WHERE APPLICABLE BRICK SPURFACE BLOCK AND LEVEL UNIFORMITY TO ACCOMMODATE FLASHING FOR WALL LOCATED STEEL OR PREFORMATION INCLUDING BUT NOT LIMITED TO PIPES, VENTS, LIGHTING, ACCESS CONTROL, ELECTRICAL, BORES.
  3. EXISTING EQUIPMENT RELOCATED AS SHOWN BUT NOT ATTACHED TO THE BUILDING ARE NOT SHOWN FOR CLARITY. SEE O&M, MECHANICAL, ELECTRICAL AND PROCESS DRAWINGS FOR LOCATION OF SUCH ITEMS.

- CODED NOTES**
1. METAL FINISH COATING. SEE DETAIL O&M.
  2. FFP DOOR AND FRAME. SEE DOOR SCHEDULE.
  3. CONCRETE STOPPING. SEE O&M DRAWING.
  4. EXTERIOR LIGHT. SEE ELEC DRAWINGS. INSTALL CONTROLLED NIGHT DOOR WHERE APPLICABLE.
  5. OVERHEAD DOOR DOORS. SEE DOOR SCHEDULE.
  6. GROUND FACE O&M.
  7. SPURFACE O&M.
  8. FINISH GRADE. SEE O&M DRAWING.
  9. CONCRETE FILLED STEEL BOLLARDS. SEE O&M DRAWING.
  10. GLASS BLOCK WINDOW. SEE DETAIL S&K.
  11. FOUNDATION WALL BELOW GRADE. NOT SHOWN IN SCALE. SEE STEEL DRAWING.
  12. CONCRETE WALL. SEE STEEL O&M.
  13. LOWER. SEE DETAIL O&M AND MECHANICAL DRAWINGS.
  14. SHEATH PANEL. SEE ELEC DWG.
  15. DUPLEX OUTLET WITH WEATHER COVER. SEE ELEC O&M. INSTALL CONTROLLED BY W.P.
  16. OVER/ON DOWN OUTLET. SEE PLUMBING DRAWING.
  17. INSURE FIRE ROOFING OVER TYPED INSULATION.

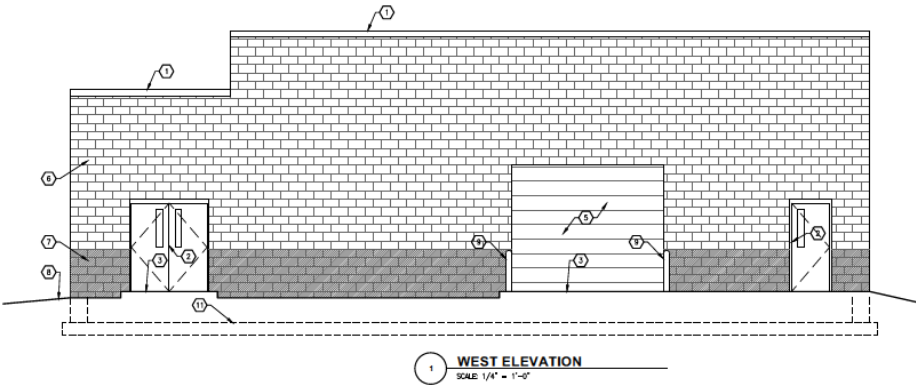
ISSUED FOR BIDDING		DATE	BY
ADDENDUM REVISIONS			
ADDENDUM NO.	ADDENDUM DATE	BY	
ISSUED FOR CONSTRUCTION			
DATE		BY	
REVISIONS			
NO.	DESCRIPTION		
RECORD DRAWINGS			
DATE		BY	
KEY PLAN			
<b>KEY PLAN</b>			
DRAWN	SA	DATE	01/15/2015
CHECKED	RDS	JOB NO	1457B119
SCALE AS NOTED			
<b>BUILDING ELEVATIONS</b>			
VILLAGE OF ASHVILLE, OHIO 2015 WATER RESOURCE RECOVERY FACILITY IMPROVEMENTS			
<b>URS</b>			
<b>2A-3</b>			

# Ashville's WRRF Project



## Attachment 1

PLOT INFO MATTHEW ABLEIDEN LA 04/02/2015 04:00 PM 04/02/2015 04:00 PM LTR-1\_PLOT-1



**1 WEST ELEVATION**  
 SCALE: 1/4" = 1'-0"

**GENERAL NOTES**

1. FINISH FLOOR ELEVATION SHOWN ON THE ARCHITECTURAL DRAWINGS IS REFERENCED FROM DATUM ELEVATION OF 710.00. SEE CIVIL DRAWINGS.
2. WHERE APPLICABLE GRIND SPURFACE BLOCK AND LEAVE IMPERFORATE TO ACCOMMODATE FLOOR FINISH FOR WALL AND CEILING FINISH OF FOUNDATION BUILDINGS BUT NOT LIMITED TO VENTS, UTILITIES, ACCESS CONTROL, ELECTRICAL BOXES.
3. EXTERIOR EQUIPMENT FEATURES ADJACENT BUT NOT ATTACHED TO THE BUILDING ARE NOT SHOWN FOR CLARITY. SEE CIVIL, MECHANICAL, ELECTRICAL AND PROCESS DRAWINGS FOR LOCATION OF SUCH ITEMS.

**1 CODED NOTES**

1. METAL PARTLET COPING. SEE DETAIL 040.
2. FIRE DOOR AND FRAME. SEE DOOR SCHEDULE.
3. CONCRETE STOMP/MASK. SEE CIVIL DRAWINGS.
4. EXTERIOR LIGHT. SEE ELEC. DRAWINGS. METAL CENTERED ABOVE DOOR WHERE APPLICABLE.
5. OVERHEAD DOOR AND DOORS. SEE DOOR SCHEDULE.
6. GRIND AND FACE CHALK.
7. SPURFACE CHALK.
8. FINISH GRADE. SEE CIVIL DRAWINGS.
9. CONCRETE FILLED STEEL BOLLS/ARDS. SEE CIVIL DRAWINGS.
10. GLASS BLOCK WINDOW. SEE DETAIL 046.
11. FOUNDATION WALL BELOW GRADE. NOT SHOWN IN SCALE. SEE CIVIL DRAWINGS.
12. CONCRETE WALL. SEE DETAIL 040.
13. LOUVER. SEE DETAIL 040 AND MECHANICAL DRAWINGS.
14. SWITCH PANELS. SEE ELEC. DWGS.
15. OUTLET OUTLET WITH WEATHER COVER. SEE ELEC DWGS. METAL COVERED BY W/P.
16. OVERFLOW DRAIN OUTLET. SEE PLUMBING DRAWINGS.
17. MEMORANE ROOFING OVER INVERTED INSULATION.

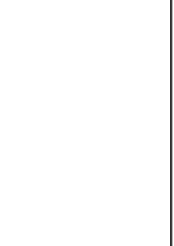
ISSUED FOR BIDDING \_\_\_\_\_ DATE \_\_\_\_\_ BY \_\_\_\_\_

ADDENDUM REVISIONS		
ADDENDUM NO.	REVISION DATE	BY

ISSUED FOR CONSTRUCTION \_\_\_\_\_ DATE \_\_\_\_\_ BY \_\_\_\_\_

REVISIONS		
NO.	DESCRIPTION	DATE

RECORD DRAWINGS \_\_\_\_\_ DATE \_\_\_\_\_ BY \_\_\_\_\_



**KEY PLAN**



DRAWN SA DATE 01/15/2015  
 CHECKED ROS JOB NO 14578119

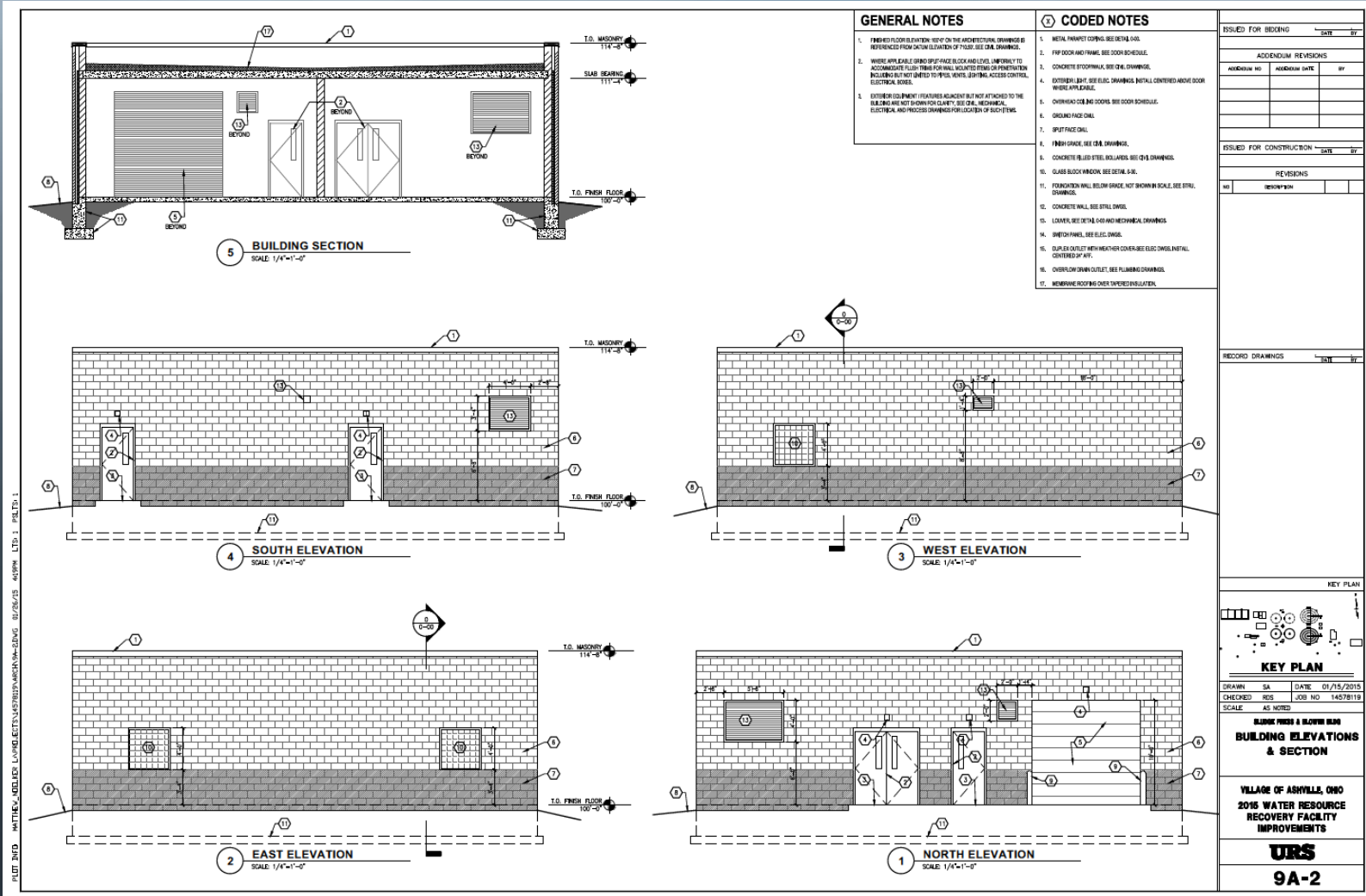
SCALE AS NOTED  
**IMPROVEMENTS**  
**BUILDING ELEVATION & SECTION**

VILLAGE OF ASHVILLE, OHIO  
 2015 WATER RESOURCE  
 RECOVERY FACILITY  
 IMPROVEMENTS

**URS**  
**2A-4**

# Ashville's WRRF Project

## Attachment 1



# Ashville's WRRF Project



## Attachment 1

**4 SOUTH ELEVATION**  
SCALE: 1/4" = 1'-0"

**3 NORTH ELEVATION**  
SCALE: 1/4" = 1'-0"

**2 EAST ELEVATION**  
SCALE: 1/4" = 1'-0"

**1 WEST ELEVATION**  
SCALE: 1/4" = 1'-0"

**GENERAL NOTES**

- WHERE APPLICABLE GRIND SPILT-FACE BLOCK AND LEVEL UNIFORMLY TO ACCOMMODATE FLUSH TRIMS FOR WALL MOUNTED TRIMS OR PENETRATIONS INCLUDING BUT NOT LIMITED TO PIPES, VENTS, LIGHTING, ACCESS, CONTROL, ELECTRICAL, ETC.
- SEE SHEET 0-00 FOR WINDOW TYPES & DETAILS.
- EXTERIOR EQUIPMENT / SERVICES ADJACENT BUT NOT ATTACHED TO THE BUILDING ARE NOT SHOWN FOR CLARITY. SEE CIVIL, MECHANICAL, ELECTRICAL AND PROCESS DRAWINGS FOR LOCATION OF SUCH ITEMS.
- REFER TO SHEET 1-1 FOR APPROVED WALL PENETRATION DETAILS.

**CODED NOTES**

- 4" GROUND FACE CMU VENEER.
- 4" SPILT-FACE CMU VENEER - ACCENT COLOR.
- 4" SPILT-FACE CMU VENEER.
- WINDOW WITH INSULATED GLASS, SEE 10 & 11 ON 4-0 FOR DETAILS.
- LOWER OPENING OR EXHAUST FAN - COORDINATE LOCATION AND SIZE OF ROOF OPENING WITH HVAC & STRUCTURAL DRAWINGS. SEE DETAIL 12/44-5.
- INSULATED & WEATHER SEALED EXTERIOR FIBR DOOR & FRAME. SEE DOOR SCHEDULE FOR DETAILS.
- CONCRETE FRONT STOOD, WALL OR CURB WORK, COORDINATE WITH CIVIL & STRUCTURAL DWGS.
- OUTLINE OF FOUNDATION SYSTEM FOR REFERENCE ONLY. COORDINATE WITH STRUC. DWGS.
- BUILDING MOUNTED LIGHT FIXTURE. SEE ELEC. DWGS.
- FINISH GRADE. SEE CIVIL DRAWINGS.
- CONCRETE COLOR. SEE DOOR SCHEDULE FOR MORE INFORMATION.
- STEEL BOLLS. CONCRETE FILLED AND PAINTED - SEE CIVIL DWGS FOR TYPICAL DETAIL.
- ALUMINUM SUTTER AND CORNSPOUT.
- ROOF VENT - REF. ROOF PLAN & DETAIL 3/44-1.
- STANDING SEAM METAL ROOF.
- VENT THROUGH ROOF - SEE PLUMBING DWGS.
- CONCRETE SHOWFACE BRK WITH COLOR ROBERT ON DASH. SLOPE AT 1" OFF AT THE LOWEST POINT OF THE ROOF.
- MECHANICAL JUNT PENETRATION AT THE EXTERIOR WALL. SEE DETAIL 5/44-4. COORDINATE WITH MECHANICAL CONTRACTOR.

ISSUED FOR BIDDING		DATE	BY
ADDENDUM REVISIONS			
ADDENDUM NO.	ADDENDUM DATE	BY	
ISSUED FOR CONSTRUCTION			
REVISIONS			
NO.	DESCRIPTION		
RECORD DRAWINGS			
SCALE			
BY			

KEY PLAN

**KEY PLAN**

DRAWN SA    DATE 01/15/2015  
 CHECKED RDS    JOB NO 14578119  
 SCALE AS NOTED

**ADMINISTRATOR BUILDING**

**BUILDING ELEVATIONS**

VILLAGE OF ASHVILLE, OHIO  
 2016 WATER RESOURCE  
 RECOVERY FACILITY  
 IMPROVEMENTS

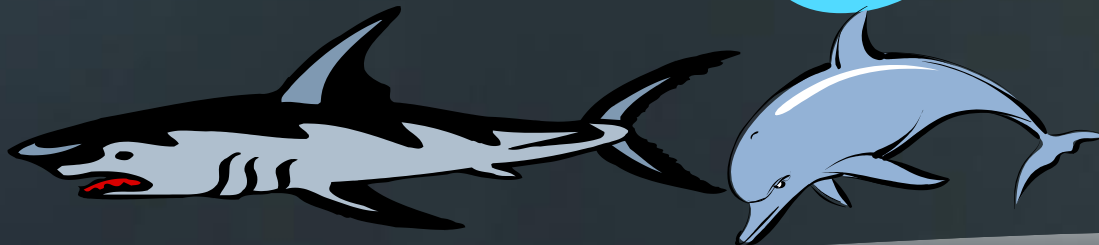
**URS**

**10A-4**

PLOT INFO: INTHEVA@DELTA.UMD.EDU; L:\PROJECTS\2016\WRRF\ASHVILLE\DWG\_02/06/15\_483PM.LTD; I: 10A-4-1



Thank You



August 4, 2014