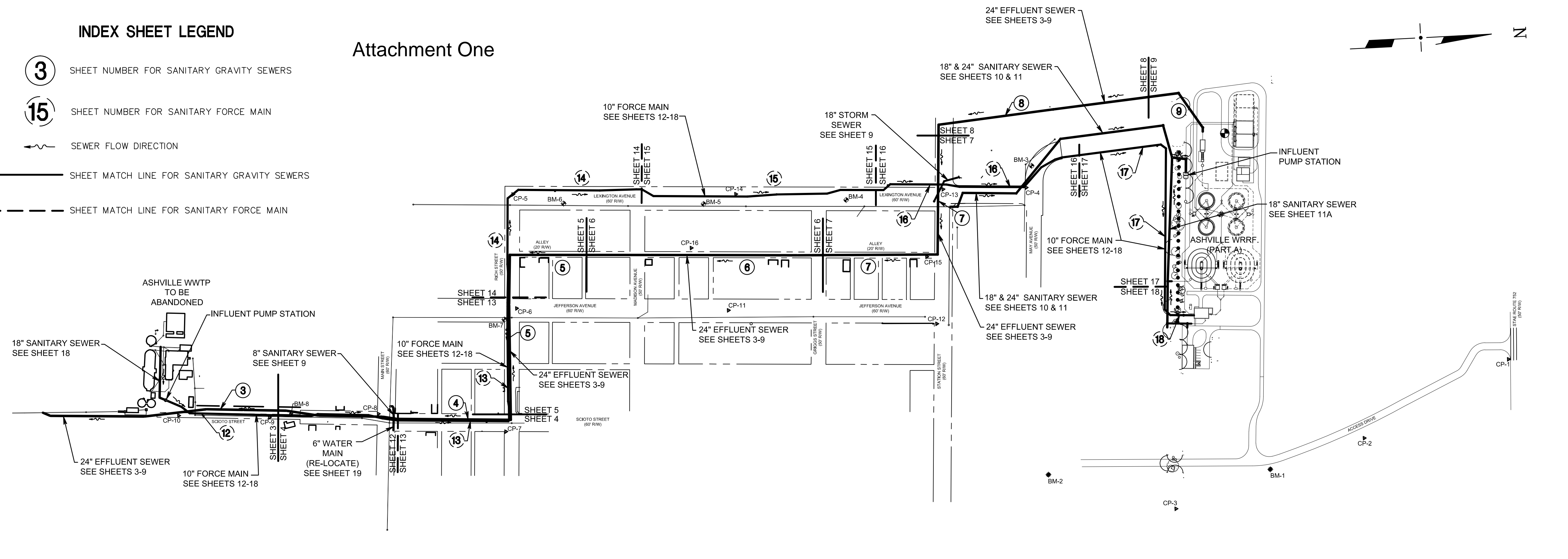


INDEX SHEET LEGEND

- 3** SHEET NUMBER FOR SANITARY GRAVITY SEWERS
- 15** SHEET NUMBER FOR SANITARY FORCE MAIN
- SEWER FLOW DIRECTION
- SHEET MATCH LINE FOR SANITARY GRAVITY SEWERS
- SHEET MATCH LINE FOR SANITARY FORCE MAIN

Attachment One



ISSUED FOR BIDDING _____ DATE _____ BY _____

ADDENDUM REVISIONS		
ADDENDUM NO	ADDENDUM DATE	BY

ISSUED FOR CONSTRUCTION _____ DATE _____ BY _____

REVISIONS			
NO.	DESCRIPTION	DATE	BY

RECORD DRAWINGS _____ DATE _____ BY _____

PROJECT CONTROL				
Point #	Northing	Easting	Elevation	Desc.
1	628090.48	1839822.75	714.23	I. PIN
2	627588.94	1840063.94	713.74	I. PIN
3	626940.05	1840269.33	714.06	I. PIN
4	626490.88	1839157.10	709.00	MAG NAIL
5	624754.65	1839089.31	705.85	MAG NAIL
6	624746.85	1839475.15	706.55	I. PIN
7	624688.67	1839889.90	706.95	MAG NAIL
8	624260.82	1839807.43	705.66	MAG NAIL
9	623892.01	1839800.40	703.58	MAG NAIL
10	623585.72	1839777.83	691.28	MAG NAIL
11	625462.40	1839519.11	709.16	I. PIN
12	626164.30	1839601.77	709.75	I. PIN
13	626209.38	1839148.00	709.30	MAG NAIL
14	625507.97	1839127.68	708.01	MAG NAIL
15	626142.29	1839374.38	709.65	HPK
16	625347.82	1839301.93	707.70	HPK

PROJECT BENCH MARKS

ALL SURVEY CONTROL ARE BASED ON THE USGS NAVD 88 AND NAD 83(1995) REFERENCE DATUM. SURVEY WAS PERFORMED IN STATE PLANE COORDINATES.

BM-1 RRS IN POLE ELEV=715.58'	BM-2 N BOLT ON F. HYD. ELEV=713.71'	BM-4 ARROW BOLT ON F. HYD. ELEV=708.15'	BM-6 ARROW BOLT ON F. HYD. ELEV=707.60'
BM-3 ARROW BOLT ON F. HYD. ELEV=711.36'	BM-5 ARROW BOLT ON F. HYD. ELEV=709.20'	BM-7 NW BOLT ON F. HYD. ELEV=708.70'	BM-8 ARROW BOLT ON F. HYD. ELEV=703.57'

SYMBOL LEGEND

- | EXISTING | | EXISTING | |
|----------|-----------------------|----------|----------------------|
| | FENCE | | SURVEY CONTROL POINT |
| | TREE LINE | | IRON PIPE FOUND |
| | PROPERTY LINE | | IRON PIN FOUND |
| | RIGHT-OF-WAY | | BENCHMARK |
| | EDGE OF PAVEMENT | | DECIDUOUS TREE |
| | EDGE OF CURB | | NON-DECIDUOUS TREE |
| | EDGE OF SIDEWALK | | SHRUB/BUSH |
| | SANITARY SEWER | | STUMP |
| | STORM SEWER | | SIGN |
| | GAS | | GUY WIRE |
| | WATER | | STORM MANHOLE |
| | TELEPHONE UNDERGROUND | | STORM CURB INLET |
| | OVERHEAD UTILITY | | CATCH BASIN SQUARE |
| | ELECTRIC UNDERGROUND | | |

NEW

- SANITARY & STORM SEWER (18" OR GREATER)
- SANITARY SEWER (15" OR LESS)
- 6" WATER MAIN
- SANITARY MANHOLE
- STORM MANHOLE
- CATCH BASIN
- CURB INLET
- TREE REMOVED

DESIGNED AM _____ DATE 05/30/14
 CHECKED MN _____ JOB NO 14578119
 SCALE HORZ: 1"=200'

**INDEX SHEET
SURVEY CONTROL &
LEGEND**

**VILLAGE OF ASHVILLE
SANITARY SEWER
IMPROVEMENTS
(PART B)**

URS Corporation