

PLOT INFO: MATTHEW_NDELUKER_L:\PROJECTS\14578119\ARCH\2A-3.DWG 01/26/15 4:18PM LTS: 1 PSLTS: 1

GENERAL NOTES

1. FINISHED FLOOR ELEVATION: 100'-0" ON THE ARCHITECTURAL DRAWINGS IS REFERENCED FROM DATUM ELEVATION OF 710.50'. SEE CIVIL DRAWINGS.
2. WHERE APPLICABLE GRIND SPLIT-FACE BLOCK AND LEVEL UNIFORMLY TO ACCOMMODATE FLUSH TRIMS FOR WALL MOUNTED ITEMS OR PENETRATION INCLUDING BUT NOT LIMITED TO PIPES, VENTS, LIGHTING, ACCESS CONTROL, ELECTRICAL BOXES.
3. EXTERIOR EQUIPMENT / FEATURES ADJACENT BUT NOT ATTACHED TO THE BUILDING ARE NOT SHOWN FOR CLARITY. SEE CIVIL, MECHANICAL, ELECTRICAL AND PROCESS DRAWINGS FOR LOCATION OF SUCH ITEMS.

CODED NOTES

1. METAL PARAPET COPING. SEE DETAIL 0-00.
2. FRP DOOR AND FRAME. SEE DOOR SCHEDULE.
3. CONCRETE STOOP/WALK. SEE CIVIL DRAWINGS.
4. EXTERIOR LIGHT, SEE ELEC. DRAWINGS. INSTALL CENTERED ABOVE DOOR WHERE APPLICABLE.
5. OVERHEAD COILING DOORS. SEE DOOR SCHEDULE.
6. GROUND FACE CMU.
7. SPLIT FACE CMU.
8. FINISH GRADE, SEE CIVIL DRAWINGS.
9. CONCRETE FILLED STEEL BOLLARDS. SEE CIVIL DRAWINGS.
10. GLASS BLOCK WINDOW. SEE DETAIL 0-00.
11. FOUNDATION WALL BELOW GRADE, NOT SHOWN IN SCALE. SEE STRU. DRAWINGS.
12. CONCRETE WALL, SEE STRU. DWGS.
13. LOUVER, SEE DETAIL 0-00 AND MECHANICAL DRAWINGS.
14. SWITCH PANEL, SEE ELEC. DWGS.
15. DUPLEX OUTLET WITH WEATHER COVER-SEE ELEC DWGS. INSTALL CENTERED 24" AFF.
16. OVERFLOW DRAIN OUTLET, SEE PLUMBING DRAWINGS.
17. MEMBRANE ROOFING OVER TAPERED INSULATION.

ISSUED FOR BIDDING _____ DATE _____ BY _____

ADDENDUM REVISIONS

ADDENDUM NO	ADDENDUM DATE	BY

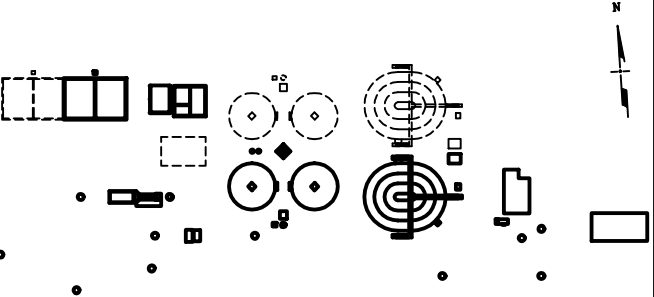
ISSUED FOR CONSTRUCTION _____ DATE _____ BY _____

REVISIONS

NO	DESCRIPTION

RECORD DRAWINGS _____ DATE _____ BY _____

KEY PLAN



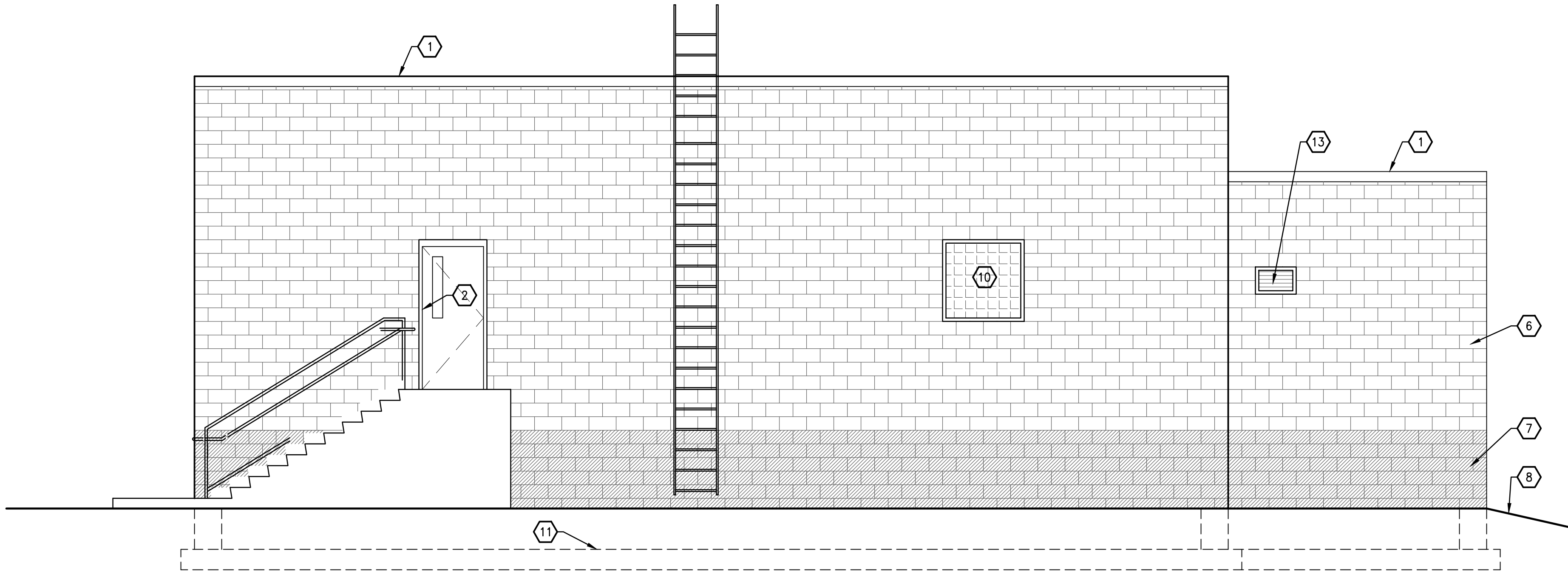
KEY PLAN

DRAWN	SA	DATE	01/15/2015
CHECKED	RDS	JOB NO	14578119
SCALE	AS NOTED		

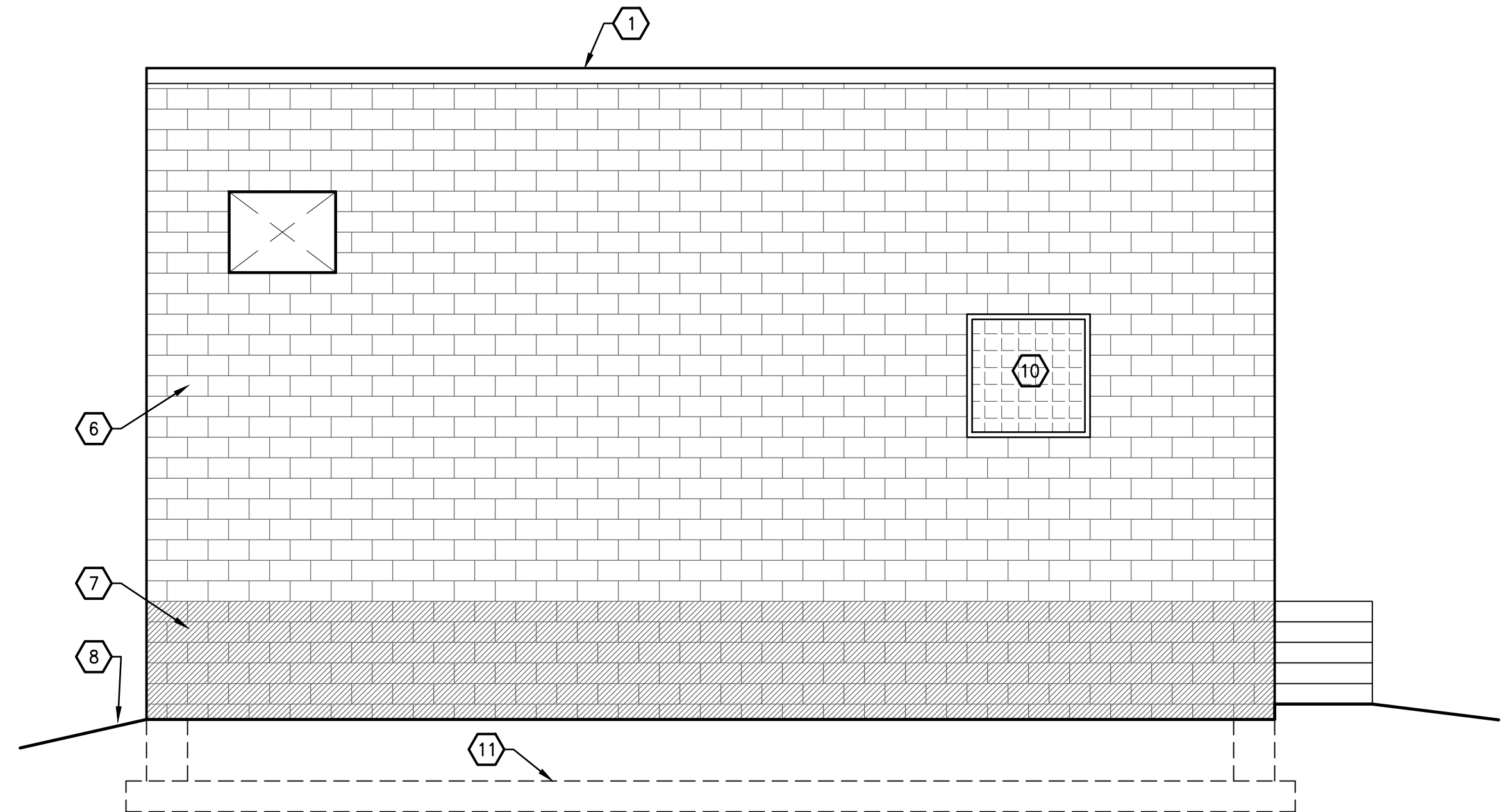
**HEADWORKS
BUILDING ELEVATIONS**

VILLAGE OF ASHVILLE, OHIO
2015 WATER RESOURCE
RECOVERY FACILITY
IMPROVEMENTS

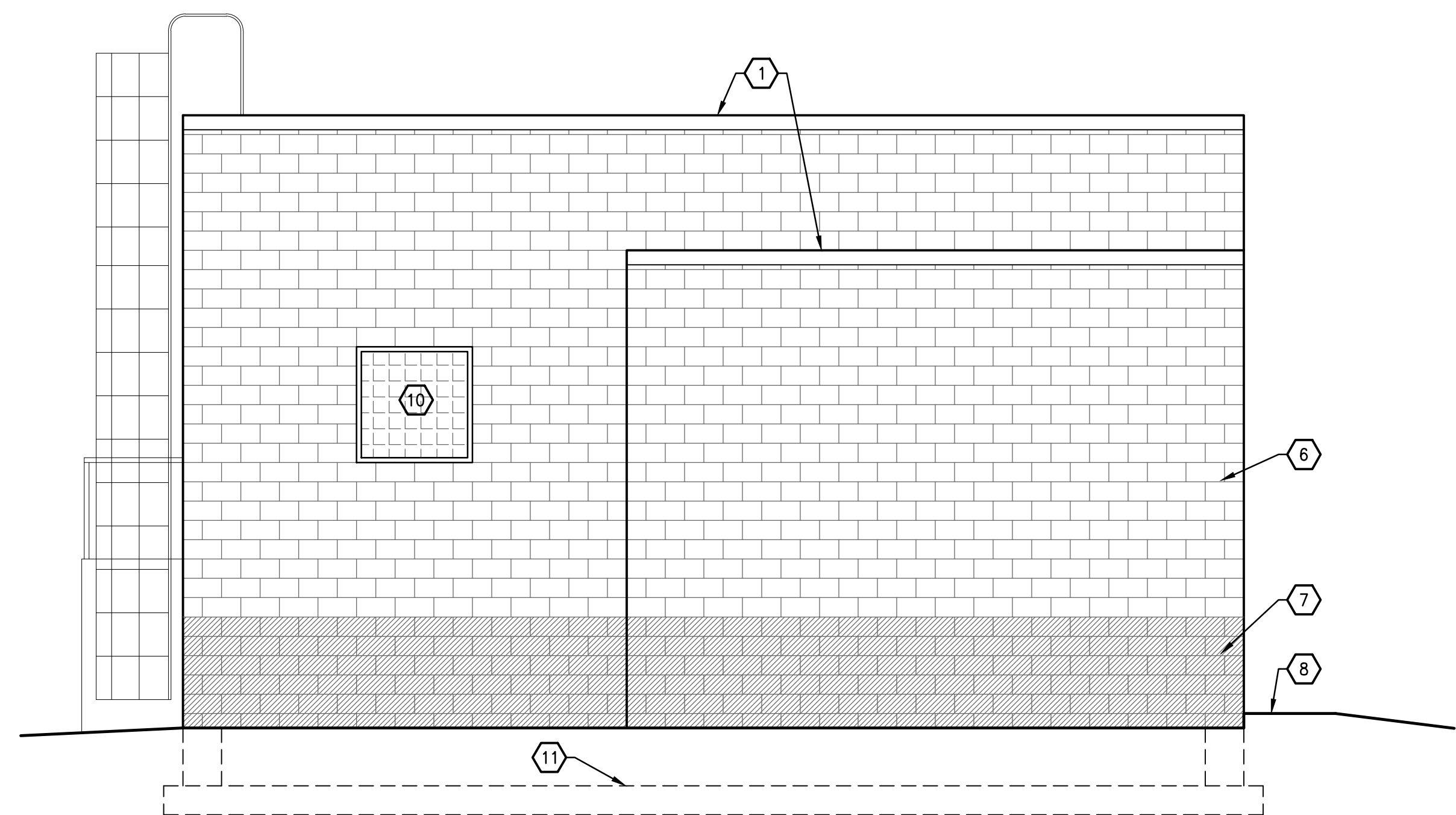
URS
2A-3



3 EAST ELEVATION
SCALE: 1/4" = 1'-0"



2 SOUTH ELEVATION
SCALE: 1/4" = 1'-0"



1 NORTH ELEVATION
SCALE: 1/4" = 1'-0"

PLOT INFO: MATTHEW_NDELUKER L:\PROJECTS\14578119\ARCH\2A-4.DWG 01/26/15 4:19PM LTS: 1 PSLTS: 1

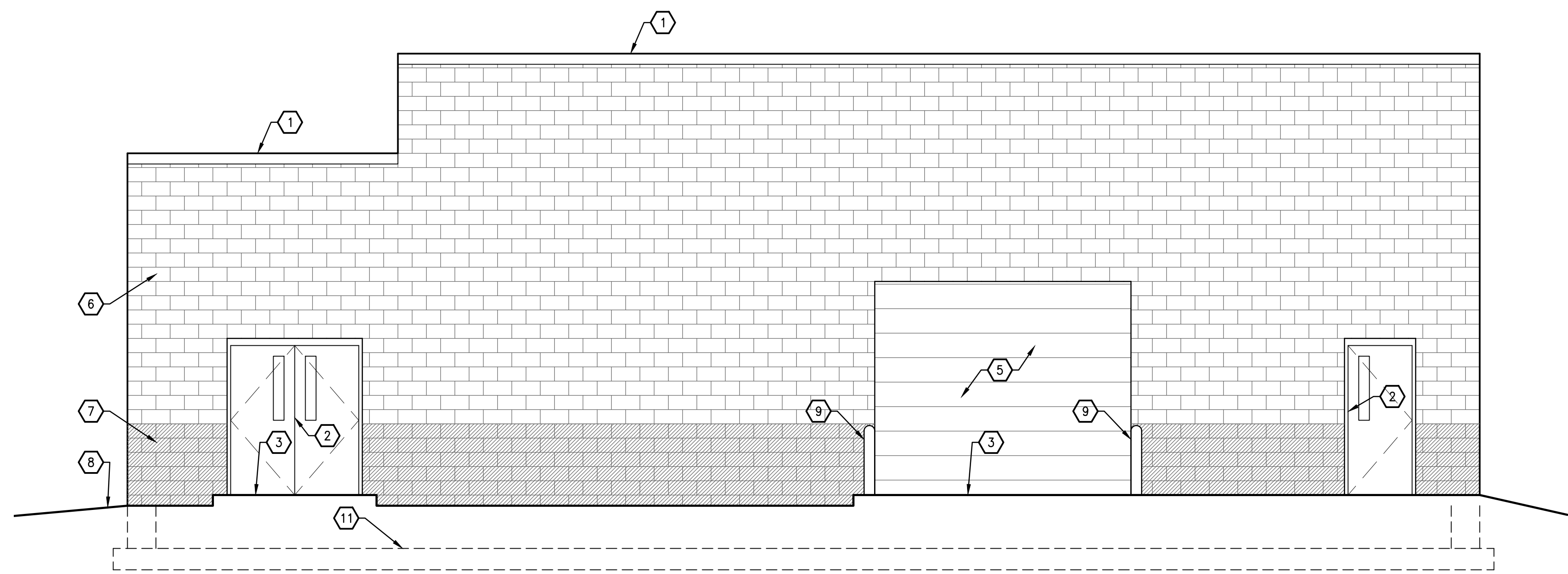
GENERAL NOTES

1. FINISHED FLOOR ELEVATION: 100'-0" ON THE ARCHITECTURAL DRAWINGS IS REFERENCED FROM DATUM ELEVATION OF 710.50'. SEE CIVIL DRAWINGS.
2. WHERE APPLICABLE GRIND SPLIT-FACE BLOCK AND LEVEL UNIFORMLY TO ACCOMMODATE FLUSH TRIMS FOR WALL MOUNTED ITEMS OR PENETRATION INCLUDING BUT NOT LIMITED TO PIPES, VENTS, LIGHTING, ACCESS CONTROL, ELECTRICAL BOXES.
3. EXTERIOR EQUIPMENT / FEATURES ADJACENT BUT NOT ATTACHED TO THE BUILDING ARE NOT SHOWN FOR CLARITY. SEE CIVIL, MECHANICAL, ELECTRICAL AND PROCESS DRAWINGS FOR LOCATION OF SUCH ITEMS.

X CODED NOTES

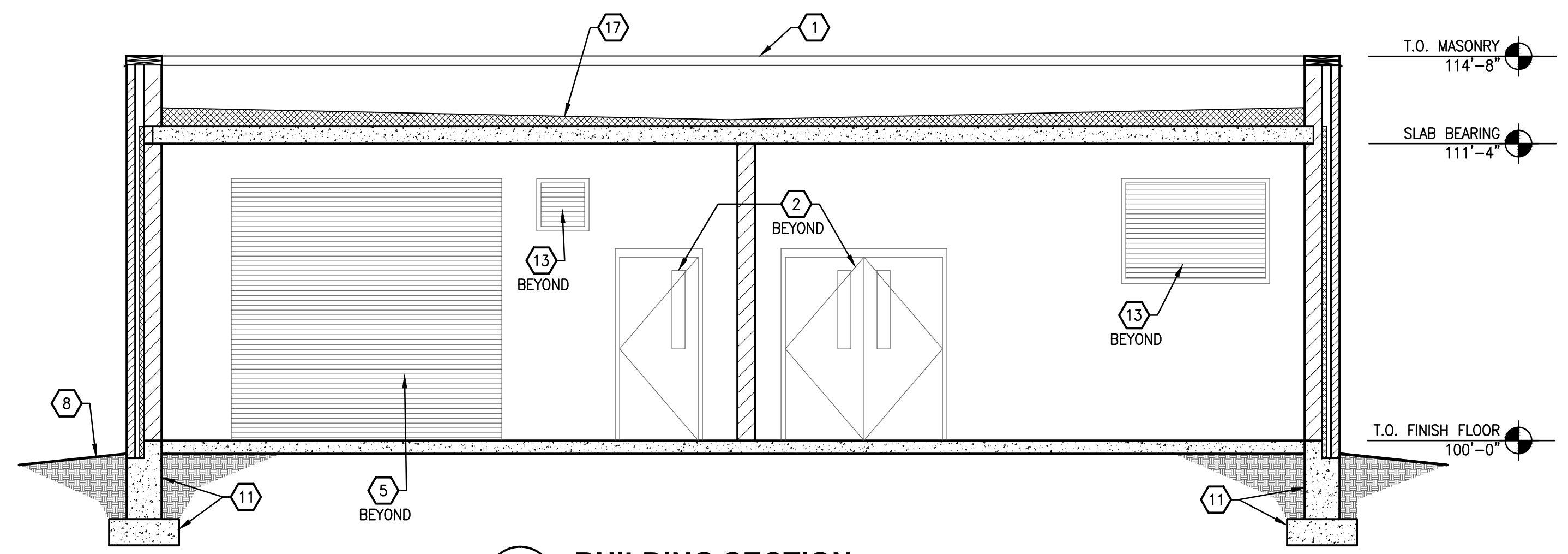
1. METAL PARAPET COPING. SEE DETAIL 0-00.
2. FRP DOOR AND FRAME. SEE DOOR SCHEDULE.
3. CONCRETE STOOP/WALK. SEE CIVIL DRAWINGS.
4. EXTERIOR LIGHT, SEE ELEC. DRAWINGS. INSTALL CENTERED ABOVE DOOR WHERE APPLICABLE.
5. OVERHEAD COILING DOORS. SEE DOOR SCHEDULE.
6. GROUND FACE CMU.
7. SPLIT FACE CMU.
8. FINISH GRADE, SEE CIVIL DRAWINGS.
9. CONCRETE FILLED STEEL BOLLARDS. SEE CIVIL DRAWINGS.
10. GLASS BLOCK WINDOW. SEE DETAIL 0-00.
11. FOUNDATION WALL BELOW GRADE, NOT SHOWN IN SCALE. SEE STRU. DRAWINGS.
12. CONCRETE WALL, SEE STRU. DWGS.
13. LOUVER, SEE DETAIL 0-00 AND MECHANICAL DRAWINGS.
14. SWITCH PANEL, SEE ELEC. DWGS.
15. DUPLEX OUTLET WITH WEATHER COVER-SEE ELEC DWGS. INSTALL CENTERED 24" AFF.
16. OVERFLOW DRAIN OUTLET, SEE PLUMBING DRAWINGS.
17. MEMBRANE ROOFING OVER TAPERED INSULATION.

ISSUED FOR BIDDING		DATE	BY
ADDENDUM REVISIONS			
ADDENDUM NO	ADDENDUM DATE	BY	
ISSUED FOR CONSTRUCTION		DATE	BY
REVISIONS			
NO	DESCRIPTION		
RECORD DRAWINGS		DATE	BY
KEY PLAN			
<p style="text-align: center;">KEY PLAN</p>			
DRAWN	SA	DATE	01/15/2015
CHECKED	RDS	JOB NO	14578119
SCALE	AS NOTED		
HEADWORKS			
BUILDING ELEVATION & SECTION			
VILLAGE OF ASHVILLE, OHIO 2015 WATER RESOURCE RECOVERY FACILITY IMPROVEMENTS			
URS			
2A-4			

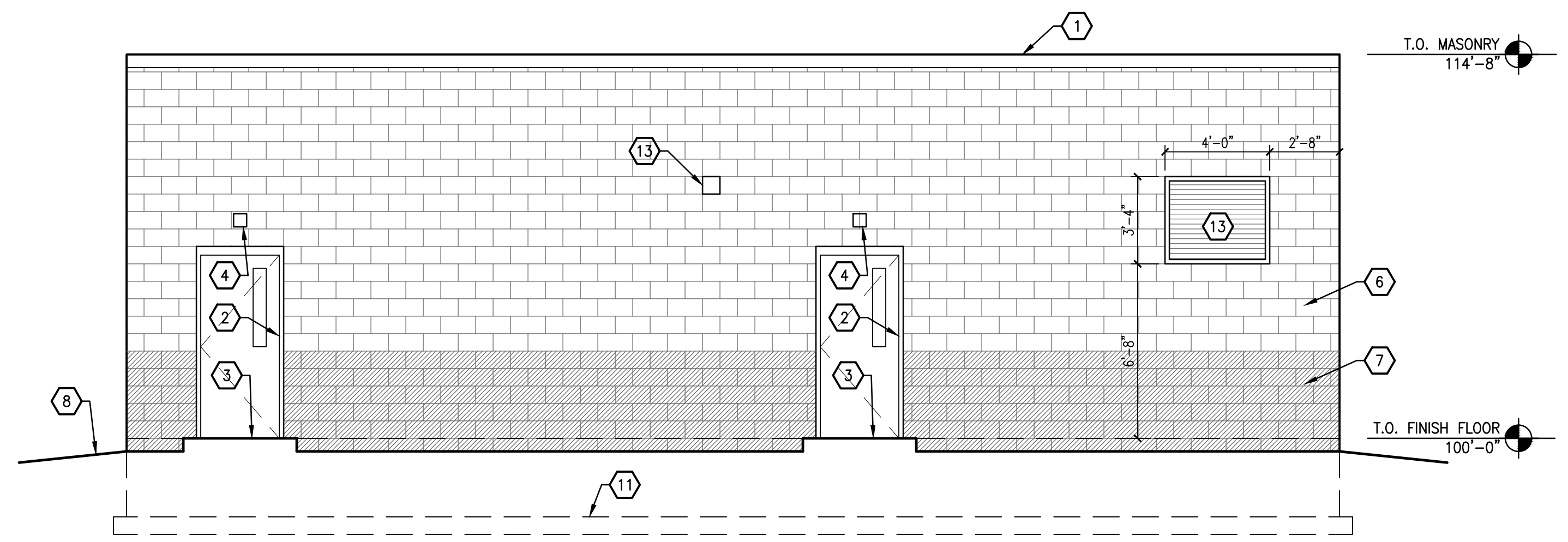


1 WEST ELEVATION
SCALE: 1/4" = 1'-0"

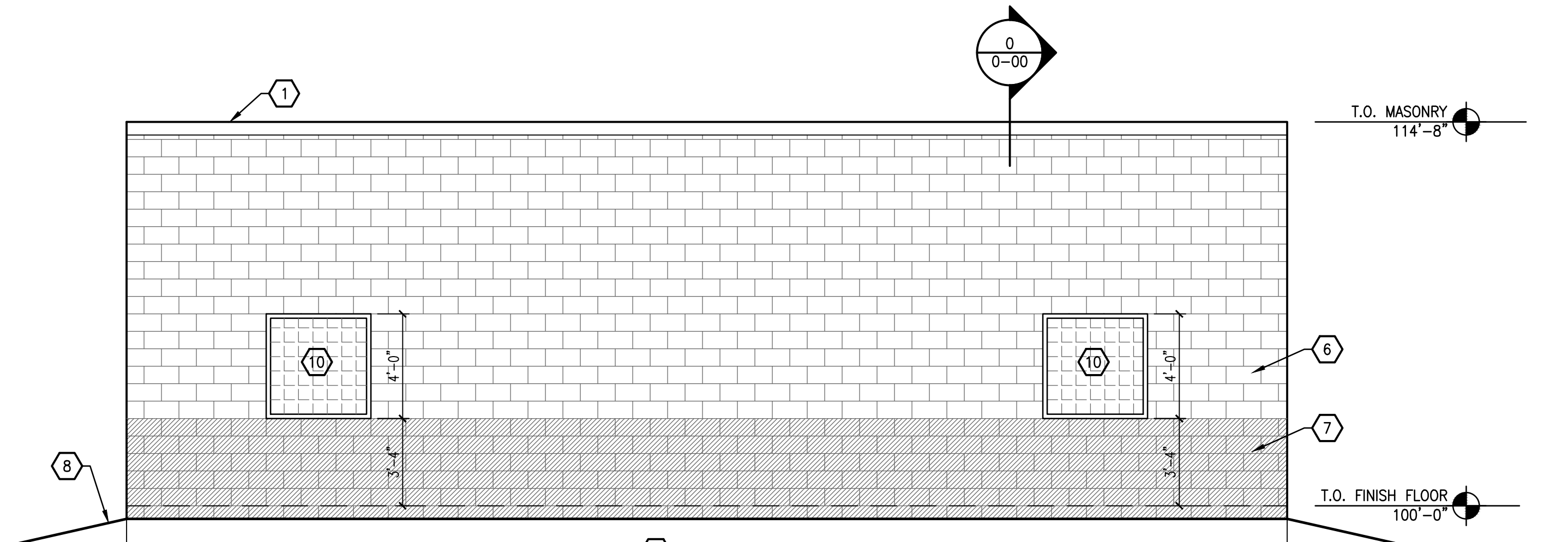
PLOT INFO: MATTHEW_NDELMER_L:\PROJECTS\14578119\ARCH\9A-2.DWG 01/26/15 4:19PM LTS: 1 PSLTS: 1



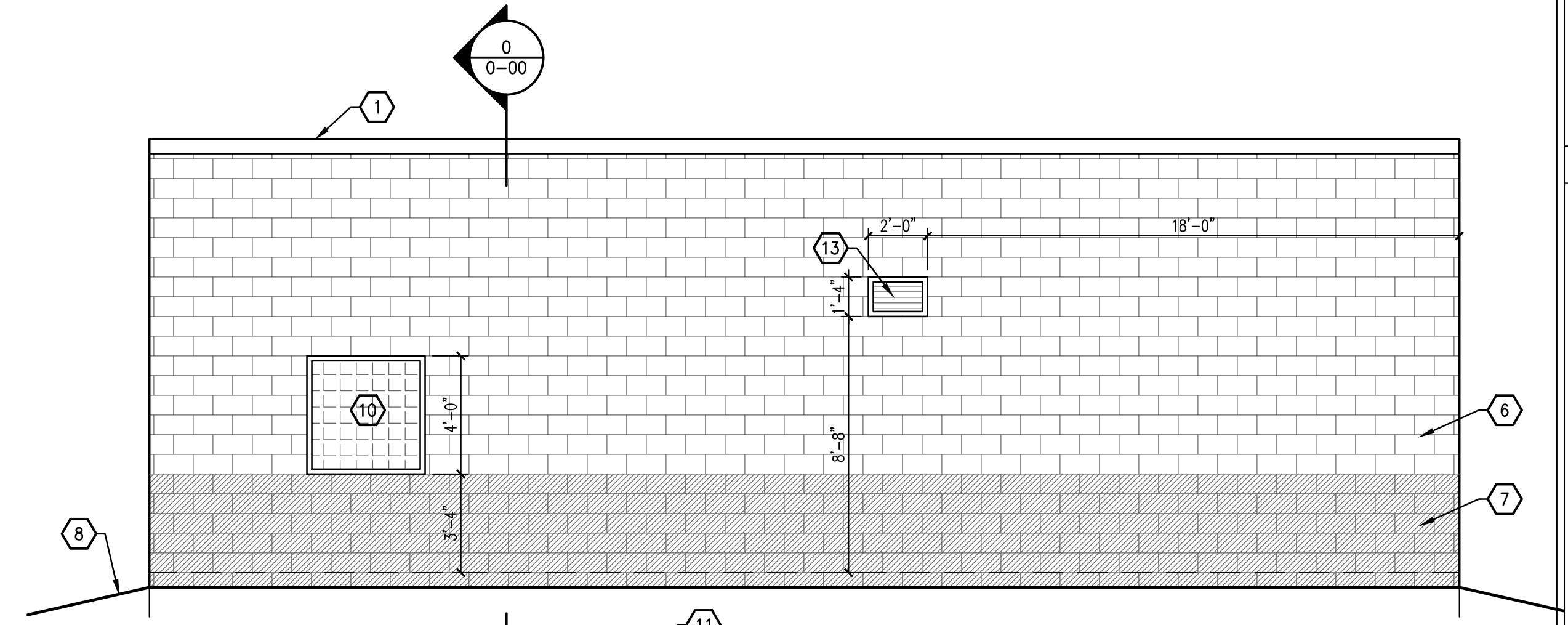
5 BUILDING SECTION
SCALE: 1/4"=1'-0"



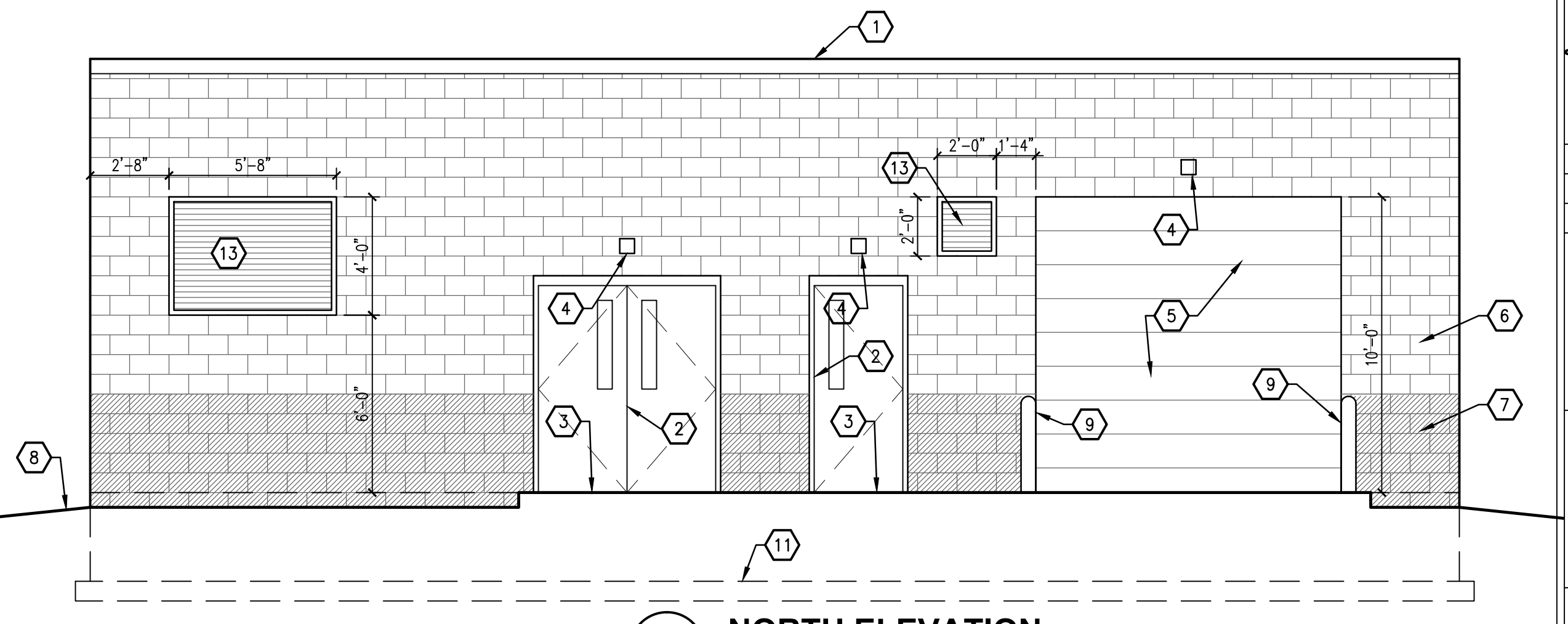
4 SOUTH ELEVATION
SCALE: 1/4"=1'-0"



2 EAST ELEVATION
SCALE: 1/4"=1'-0"



3 WEST ELEVATION
SCALE: 1/4"=1'-0"



1 NORTH ELEVATION
SCALE: 1/4"=1'-0"

GENERAL NOTES

1. FINISHED FLOOR ELEVATION: 100'-0" ON THE ARCHITECTURAL DRAWINGS IS REFERENCED FROM DATUM ELEVATION OF 710.50'. SEE CIVIL DRAWINGS.
2. WHERE APPLICABLE GRIND SPLIT-FACE BLOCK AND LEVEL UNIFORMLY TO ACCOMMODATE FLUSH TRIMS FOR WALL MOUNTED ITEMS OR PENETRATION INCLUDING BUT NOT LIMITED TO PIPES, VENTS, LIGHTING, ACCESS CONTROL, ELECTRICAL BOXES.
3. EXTERIOR EQUIPMENT / FEATURES ADJACENT BUT NOT ATTACHED TO THE BUILDING ARE NOT SHOWN FOR CLARITY. SEE CIVIL, MECHANICAL, ELECTRICAL AND PROCESS DRAWINGS FOR LOCATION OF SUCH ITEMS.

X CODED NOTES

1. METAL PARAPET COPING. SEE DETAIL 0-00.
2. FRP DOOR AND FRAME. SEE DOOR SCHEDULE.
3. CONCRETE STOOP/WALK. SEE CIVIL DRAWINGS.
4. EXTERIOR LIGHT, SEE ELEC. DRAWINGS. INSTALL CENTERED ABOVE DOOR WHERE APPLICABLE.
5. OVERHEAD COILING DOORS. SEE DOOR SCHEDULE.
6. GROUND FACE CMU.
7. SPLIT FACE CMU.
8. FINISH GRADE, SEE CIVIL DRAWINGS.
9. CONCRETE FILLED STEEL BOLLARDS. SEE CIVIL DRAWINGS.
10. GLASS BLOCK WINDOW. SEE DETAIL 0-00.
11. FOUNDATION WALL BELOW GRADE, NOT SHOWN IN SCALE. SEE STRU. DRAWINGS.
12. CONCRETE WALL, SEE STRU. DWGS.
13. LOUVER, SEE DETAIL 0-00 AND MECHANICAL DRAWINGS.
14. SWITCH PANEL, SEE ELEC. DWGS.
15. DUPLEX OUTLET WITH WEATHER COVER-SEE ELEC DWGS. INSTALL CENTERED 24" AFF.
16. OVERFLOW DRAIN OUTLET, SEE PLUMBING DRAWINGS.
17. MEMBRANE ROOFING OVER TAPERED INSULATION.

ISSUED FOR BIDDING _____ DATE _____ BY _____

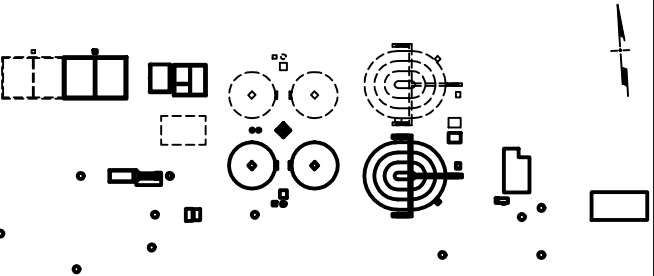
ADDENDUM REVISIONS		
ADDENDUM NO	ADDENDUM DATE	BY

ISSUED FOR CONSTRUCTION _____ DATE _____ BY _____

REVISIONS		
NO	DESCRIPTION	

RECORD DRAWINGS _____ DATE _____ BY _____

KEY PLAN



KEY PLAN

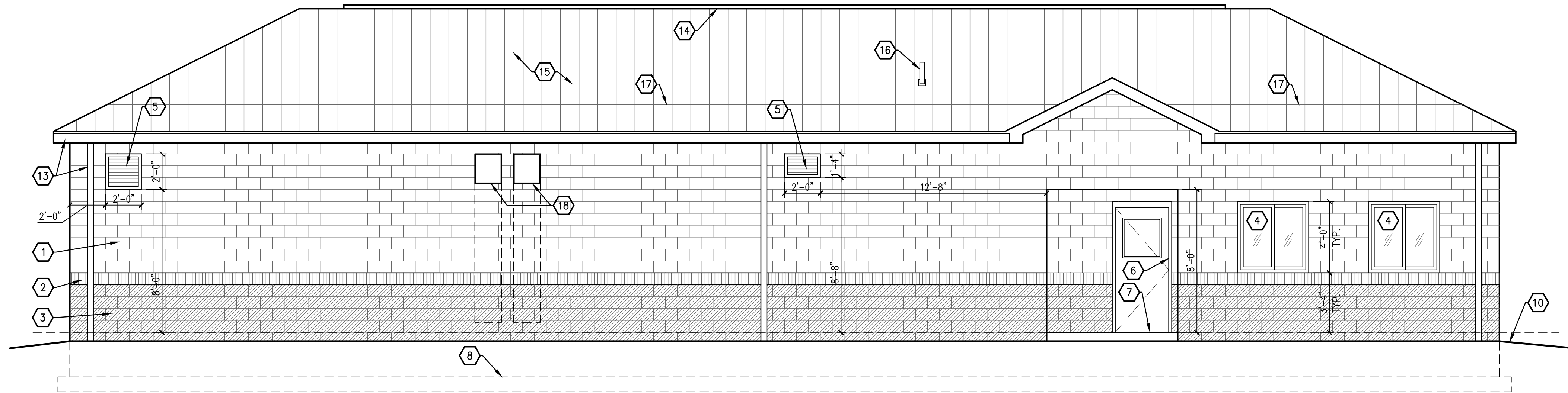
DRAWN	SA	DATE	01/15/2015
CHECKED	RDS	JOB NO	14578119
SCALE AS NOTED			

**SLUDGE PRESS & BLOWER BLDG
BUILDING ELEVATIONS
& SECTION**

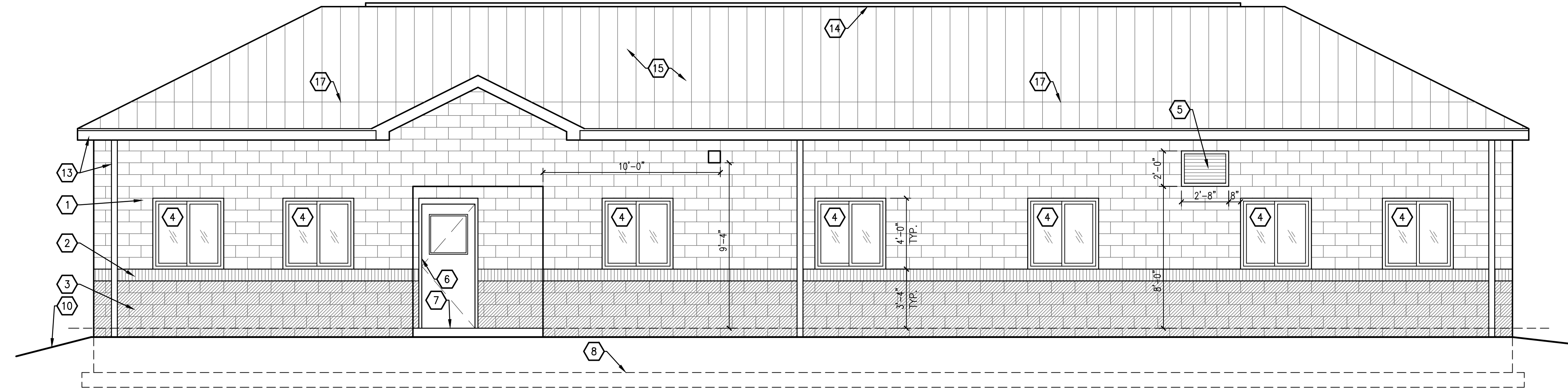
VILLAGE OF ASHVILLE, OHIO
2015 WATER RESOURCE
RECOVERY FACILITY
IMPROVEMENTS

URS
9A-2

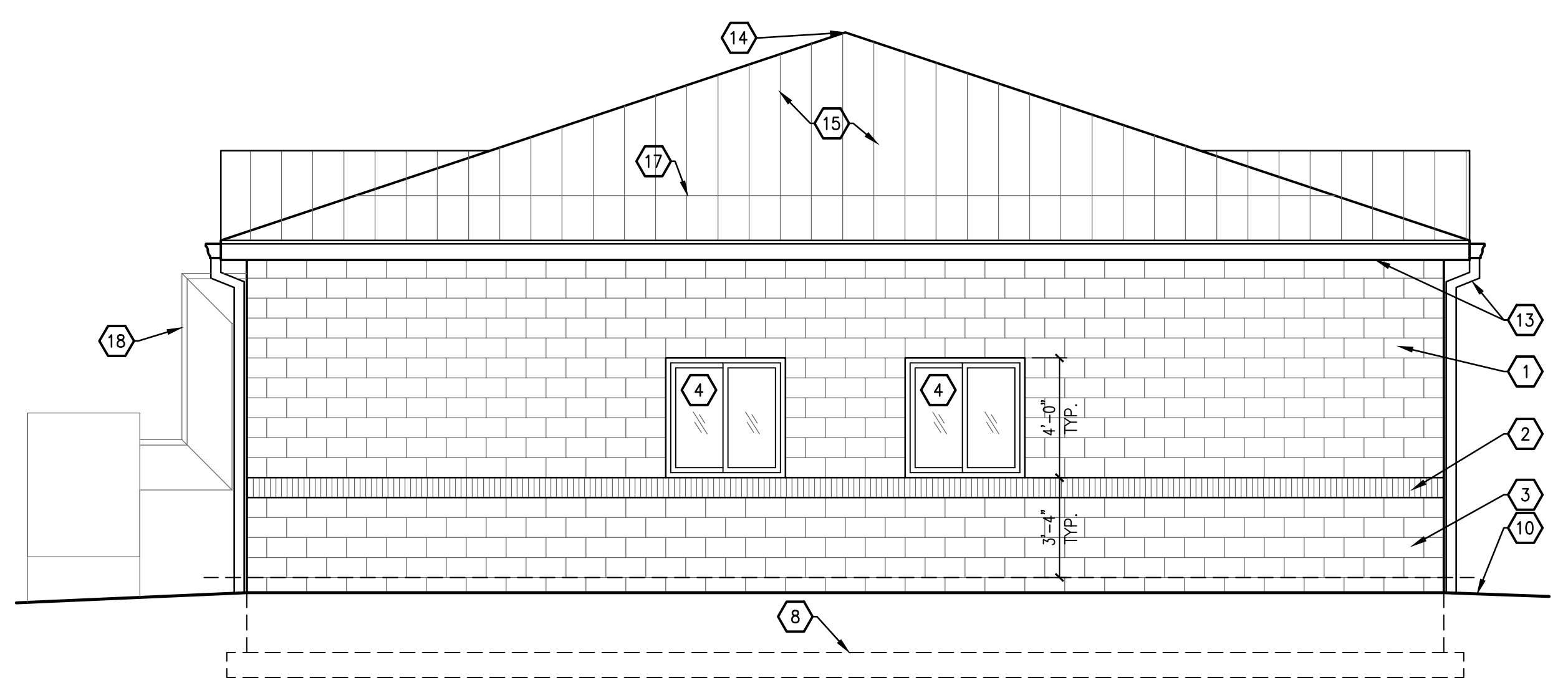
PLOT INFO: MATTHEW_NDECKER_L:\PROJECTS\14578119\ARCH\10A-4.DWG 01/26/15 4:20PM LTS: 1 PSLTS: 1



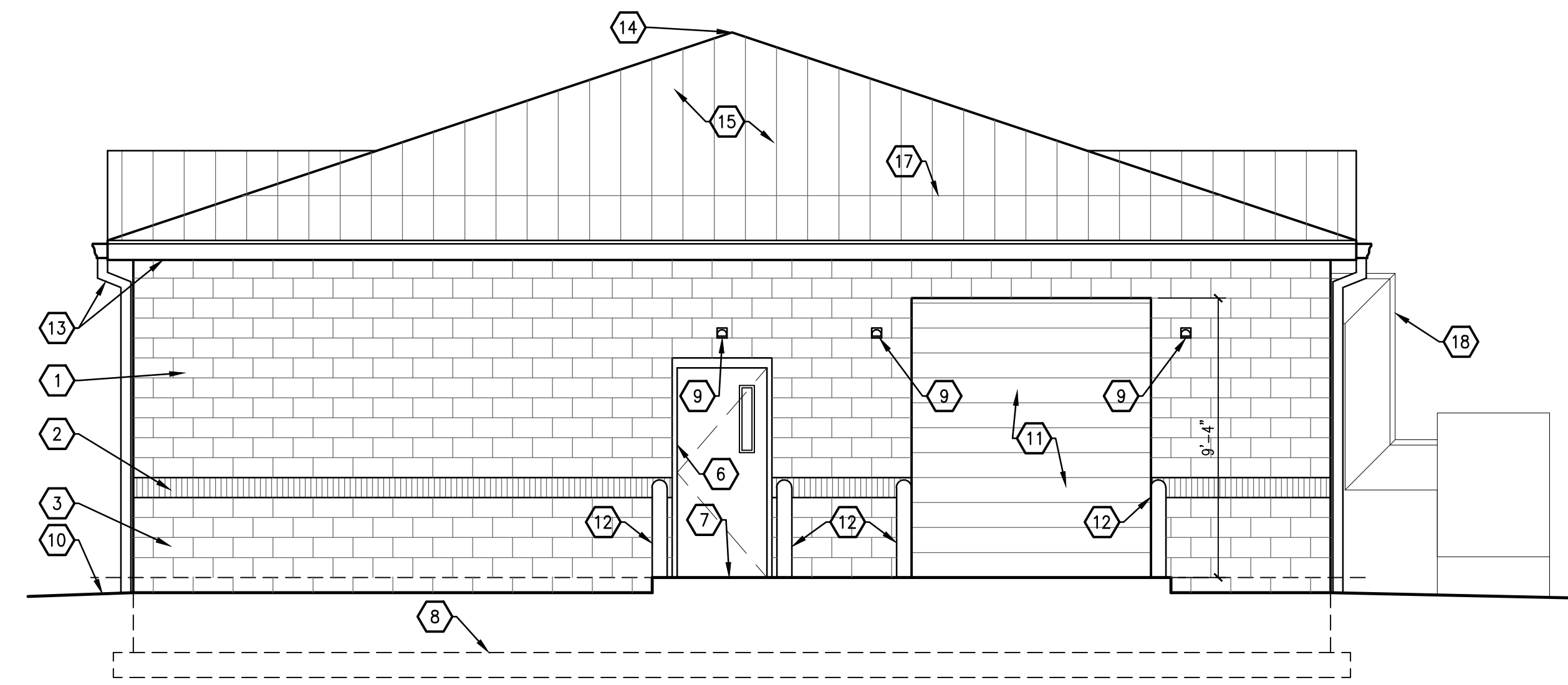
4 SOUTH ELEVATION
SCALE: 1/4" = 1'-0"



3 NORTH ELEVATION
SCALE: 1/4" = 1'-0"



2 EAST ELEVATION
SCALE: 1/4" = 1'-0"



1 WEST ELEVATION
SCALE: 1/4" = 1'-0"

GENERAL NOTES

- WHERE APPLICABLE GRIND SPLIT-FACE BLOCK AND LEVEL UNIFORMLY TO ACCOMMODATE FLUSH TRIMS FOR WALL MOUNTED ITEMS OR PENETRATION INCLUDING BUT NOT LIMITED TO PIPES, VENTS, LIGHTING, ACCESS CONTROL, ELECTRICAL BOXES.
- SEE SHEET 0-00 FOR WINDOW TYPES & DETAILS.
- EXTERIOR EQUIPMENT / FEATURES ADJACENT BUT NOT ATTACHED TO THE BUILDING ARE NOT SHOWN FOR CLARITY, SEE CIVIL, MECHANICAL, ELECTRICAL AND PROCESS DRAWINGS FOR LOCATION OF SUCH ITEMS.
- REFER TO SHEET 7A-1 FOR APPROVED WALL PENETRATION DETAILS.

X CODED NOTES

- 4" GROUND FACE CMU VENEER.
- 4" SPLIT-FACE CMU VENEER- ACCENT COLOR.
- 4" SPLIT-FACE CMU VENEER.
- WINDOW WITH INSULATED GLASS. SEE 10 & 11 ON 4A-5 FOR DETAILS.
- LOUVER OPENING OR EXHAUST FAN- COORDINATE LOCATION AND SIZE OF ROUGH OPENING WITH HVAC & STRUCTURAL DRAWINGS. SEE DETAIL 12/4A-5.
- INSULATED & WEATHER SEALED EXTERIOR FRP DOOR & FRAME. SEE DOOR SCHEDULE FOR DETAILS.
- CONCRETE FROST STOOP, WALK OR DRIVE APRON. COORDINATE WITH CIVIL & STRUCTURAL DWGS.
- OUTLINE OF FOUNDATION, SHOWN FOR REFERENCE ONLY, COORDINATE WITH STRU. DWGS.
- BUILDING MOUNTED LIGHT FIXTURE, SEE ELEC DWGS.
- FINISH GRADE, SEE CIVIL DRAWINGS.
- OVERHEAD COILING DOOR. SEE DOOR SCHEDULE FOR MORE INFORMATION.
- STEEL BOLLARD, CONCRETE FILLED AND PAINTED - SEE CIVIL DWGS FOR TYPICAL DETAIL.
- ALUMINUM GUTTER AND DOWNSPOUT.
- RIDGE VENT - REF. ROOF PLAN & DETAIL 3/4A-1.
- STANDING SEAM METAL ROOF.
- VENT THROUGH ROOF- SEE PLUMBING DWGS.
- CONTINUOUS SNOW/ICE BAR WITH COLOR INSERT ON EACH SLOPE AT 18" OFF THE LOWEST POINT OF THE ROOF.
- MECHANICAL DUCT PENETRATION AT THE EXTERIOR WALL, SEE DETAIL 5/A4-4. COORDINATE WITH MECHANICAL CONTRACTOR.

ISSUED FOR BIDDING _____ DATE _____ BY _____

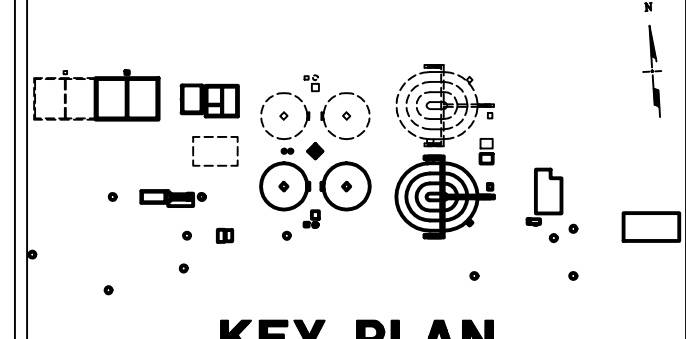
ADDENDUM REVISIONS		
ADDENDUM NO	ADDENDUM DATE	BY

ISSUED FOR CONSTRUCTION _____ DATE _____ BY _____

REVISIONS		
NO	DESCRIPTION	DATE

RECORD DRAWINGS _____ DATE _____ BY _____

KEY PLAN



KEY PLAN

DRAWN SA DATE 01/15/2015
CHECKED RDS JOB NO 14578119
SCALE AS NOTED

**ADMINISTRATION BUILDING
BUILDING ELEVATIONS**

**VILLAGE OF ASHVILLE, OHIO
2015 WATER RESOURCE
RECOVERY FACILITY
IMPROVEMENTS**

**URS
10A-4**